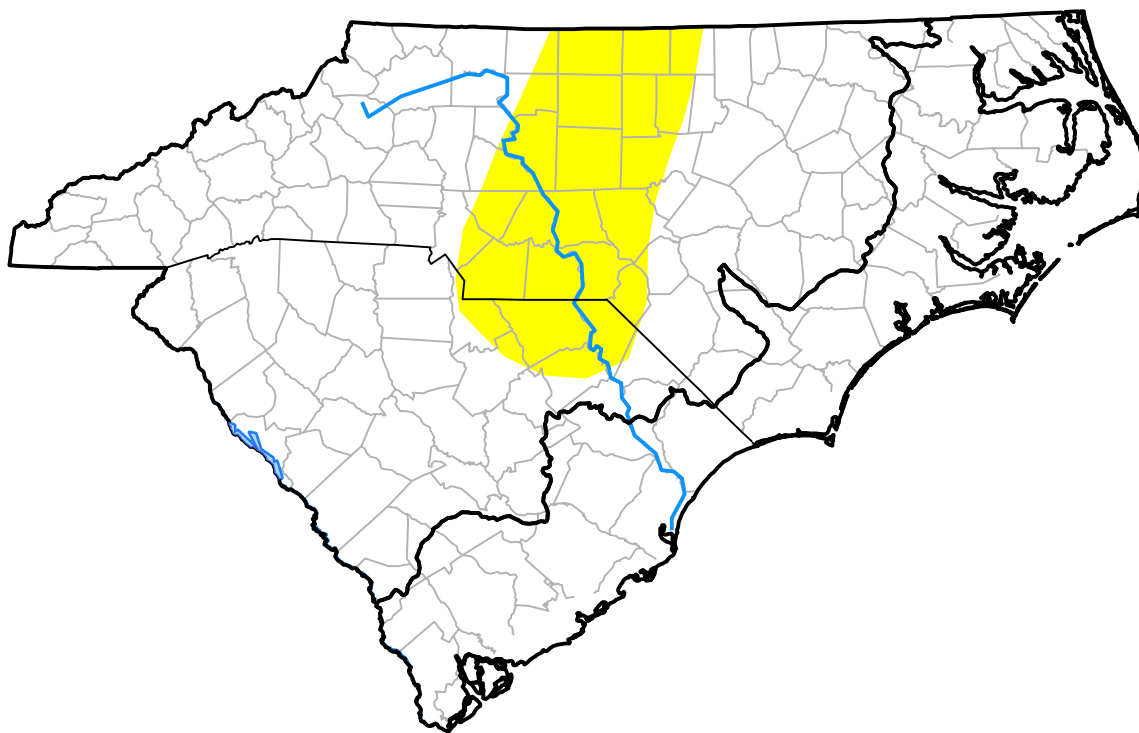


U.S. Drought Monitor

Coastal Carolinas RDEWS

May 31, 2005
 (Released Thursday, Jun. 2, 2005)
 Valid 8 a.m. EDT



Drought Conditions (Percent Area)

	None	D0	D1	D2	D3	D4
Current	100.00	0.00	0.00	0.00	0.00	0.00
Last Week <i>05-26-2005</i>	100.00	0.00	0.00	0.00	0.00	0.00
3 Months Ago <i>03-03-2005</i>	100.00	0.00	0.00	0.00	0.00	0.00
Start of Calendar Year <i>01-06-2005</i>	100.00	0.00	0.00	0.00	0.00	0.00
Start of Water Year <i>09-30-2004</i>	100.00	0.00	0.00	0.00	0.00	0.00
One Year Ago <i>06-03-2004</i>	64.53	7.28	28.19	0.00	0.00	0.00

Intensity:

- None
- D0 Abnormally Dry
- D1 Moderate Drought
- D2 Severe Drought
- D3 Extreme Drought
- D4 Exceptional Drought

The Drought Monitor focuses on broad-scale conditions. Local conditions may vary. For more information on the Drought Monitor, go to <https://droughtmonitor.unl.edu/About.aspx>

Author:

Brad Rippey
 U.S. Department of Agriculture



droughtmonitor.unl.edu