

# U.S. Drought Monitor

## Arkansas-White-Red Watershed

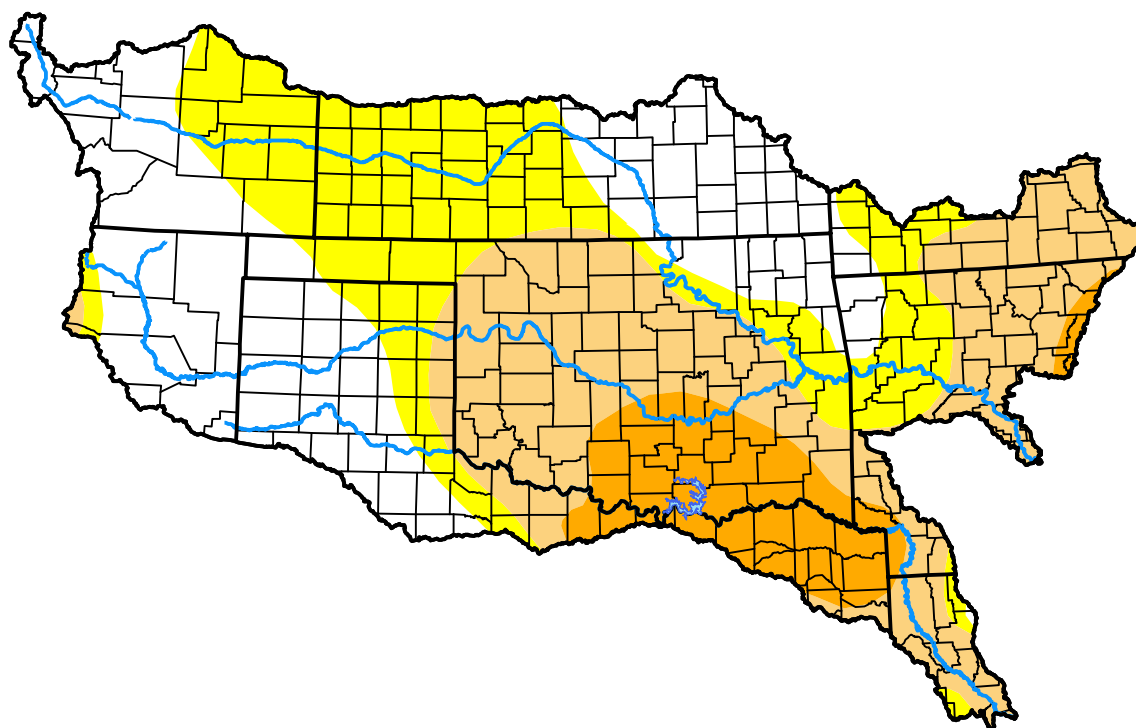
June 7, 2005

(Released Thursday, Jun. 9, 2005)

Valid 8 a.m. EDT

### Drought Conditions (Percent Area)

	None	D0	D1	D2	D3	D4
<b>Current</b>	33.35	26.84	28.98	10.83	0.00	0.00
<b>Last Week</b> <i>06-02-2005</i>	33.09	37.20	25.22	4.48	0.00	0.00
<b>3 Months Ago</b> <i>03-10-2005</i>	84.75	13.51	1.47	0.28	0.00	0.00
<b>Start of Calendar Year</b> <i>01-06-2005</i>	90.10	6.91	2.42	0.44	0.12	0.00
<b>Start of Water Year</b> <i>09-30-2004</i>	73.60	22.37	3.13	0.78	0.12	0.00
<b>One Year Ago</b> <i>06-10-2004</i>	27.84	27.03	30.51	11.97	2.65	0.00



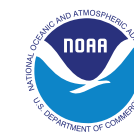
### Intensity:



The Drought Monitor focuses on broad-scale conditions. Local conditions may vary. For more information on the Drought Monitor, go to <https://droughtmonitor.unl.edu/About.aspx>

### Author:

Michael Hayes  
National Drought Mitigation Center



[droughtmonitor.unl.edu](https://droughtmonitor.unl.edu)