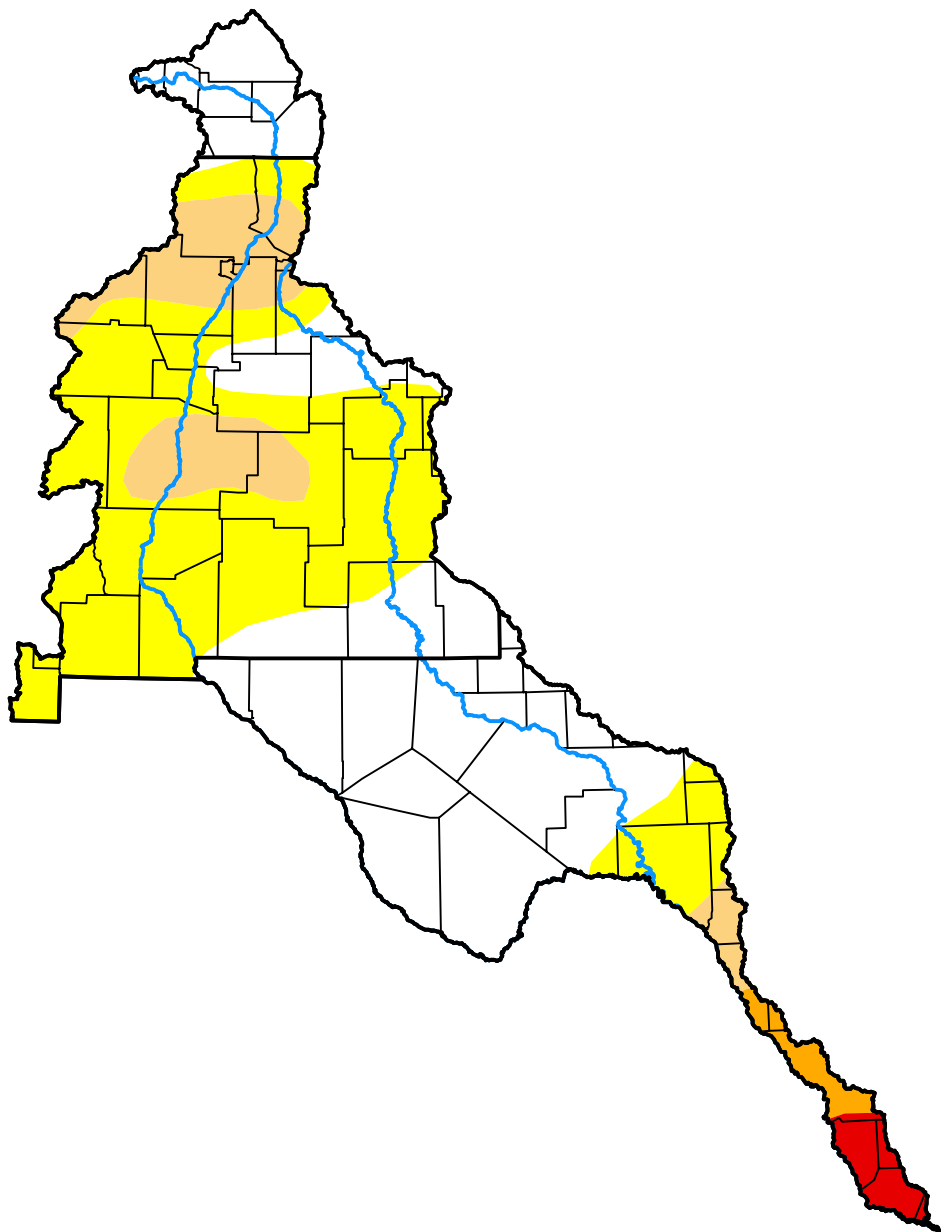


U.S. Drought Monitor

Rio Grande Watershed

July 5, 2005
 (Released Thursday, Jul. 7, 2005)
 Valid 8 a.m. EDT



Drought Conditions (Percent Area)

	None	D0-D4	D1-D4	D2-D4	D3-D4	D4
Current	44.44	55.56	15.35	3.53	2.01	0.00
Last Week <i>06-30-2005</i>	69.70	30.30	14.93	3.11	0.71	0.00
3 Months Ago <i>04-07-2005</i>	64.50	35.50	15.95	4.25	0.00	0.00
Start of Calendar Year <i>01-06-2005</i>	54.70	45.30	35.56	17.25	6.02	0.00
Start of Water Year <i>09-30-2004</i>	40.50	59.50	41.01	28.91	2.89	0.00
One Year Ago <i>07-08-2004</i>	15.41	84.59	63.61	31.41	5.78	0.00

Intensity:

- None
- D0 Abnormally Dry
- D1 Moderate Drought
- D2 Severe Drought
- D3 Extreme Drought
- D4 Exceptional Drought

The Drought Monitor focuses on broad-scale conditions. Local conditions may vary. For more information on the Drought Monitor, go to <https://droughtmonitor.unl.edu/About.aspx>

Author:

Richard Tinker
 CPC/NOAA/NWS/NCEP

