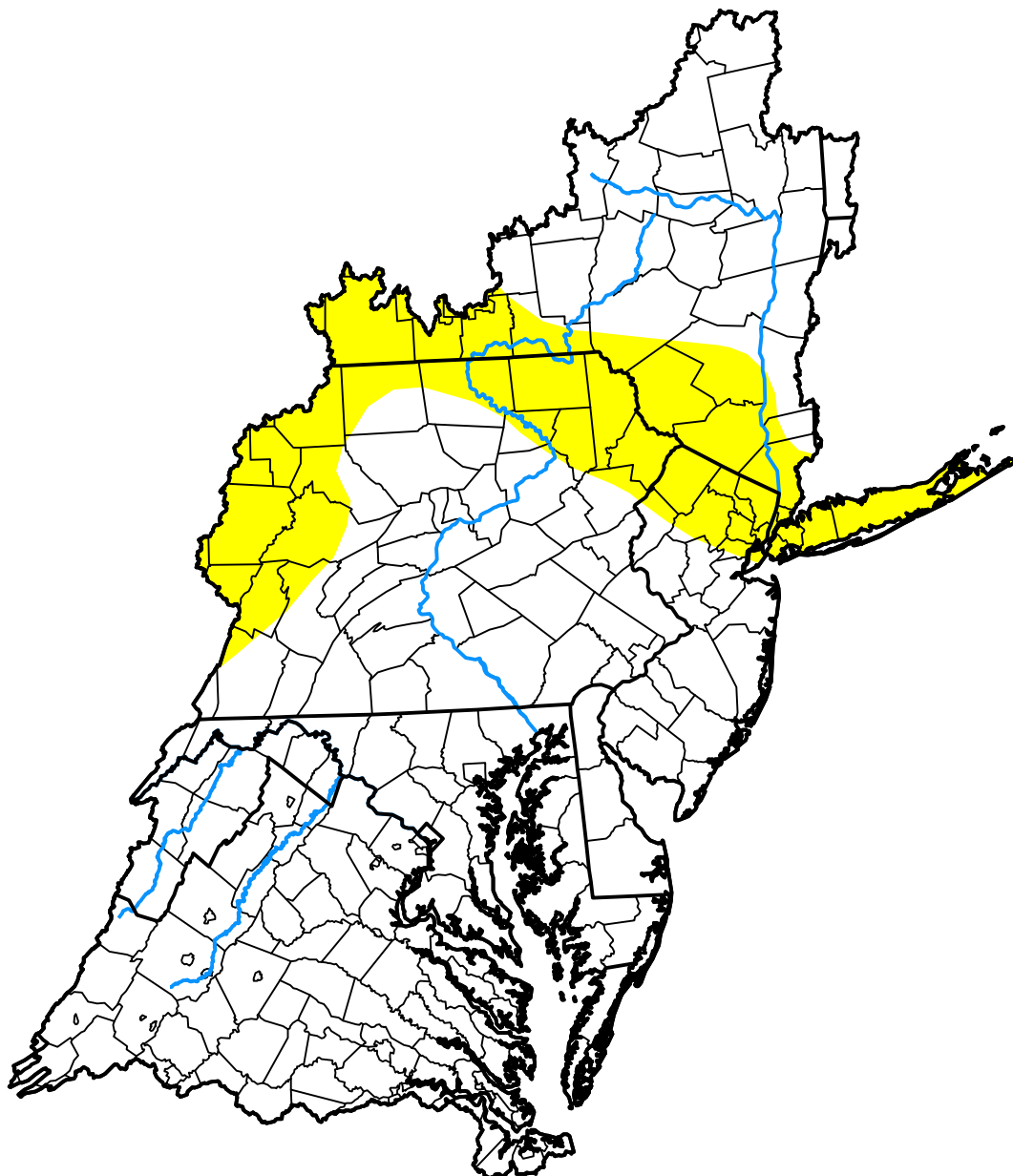


U.S. Drought Monitor

Mid Atlantic Watershed

August 2, 2005
 (Released Thursday, Aug. 4, 2005)
 Valid 8 a.m. EDT



Drought Conditions (Percent Area)

	None	D0	D1	D2	D3	D4
Current	80.15	19.85	0.00	0.00	0.00	0.00
Last Week <i>07-28-2005</i>	86.30	13.70	0.00	0.00	0.00	0.00
3 Months Ago <i>05-05-2005</i>	100.00	0.00	0.00	0.00	0.00	0.00
Start of Calendar Year <i>01-06-2005</i>	100.00	0.00	0.00	0.00	0.00	0.00
Start of Water Year <i>09-30-2004</i>	100.00	0.00	0.00	0.00	0.00	0.00
One Year Ago <i>08-05-2004</i>	100.00	0.00	0.00	0.00	0.00	0.00

Intensity:



The Drought Monitor focuses on broad-scale conditions. Local conditions may vary. For more information on the Drought Monitor, go to <https://droughtmonitor.unl.edu/About.aspx>

Author:

Michael Hayes
 National Drought Mitigation Center



droughtmonitor.unl.edu