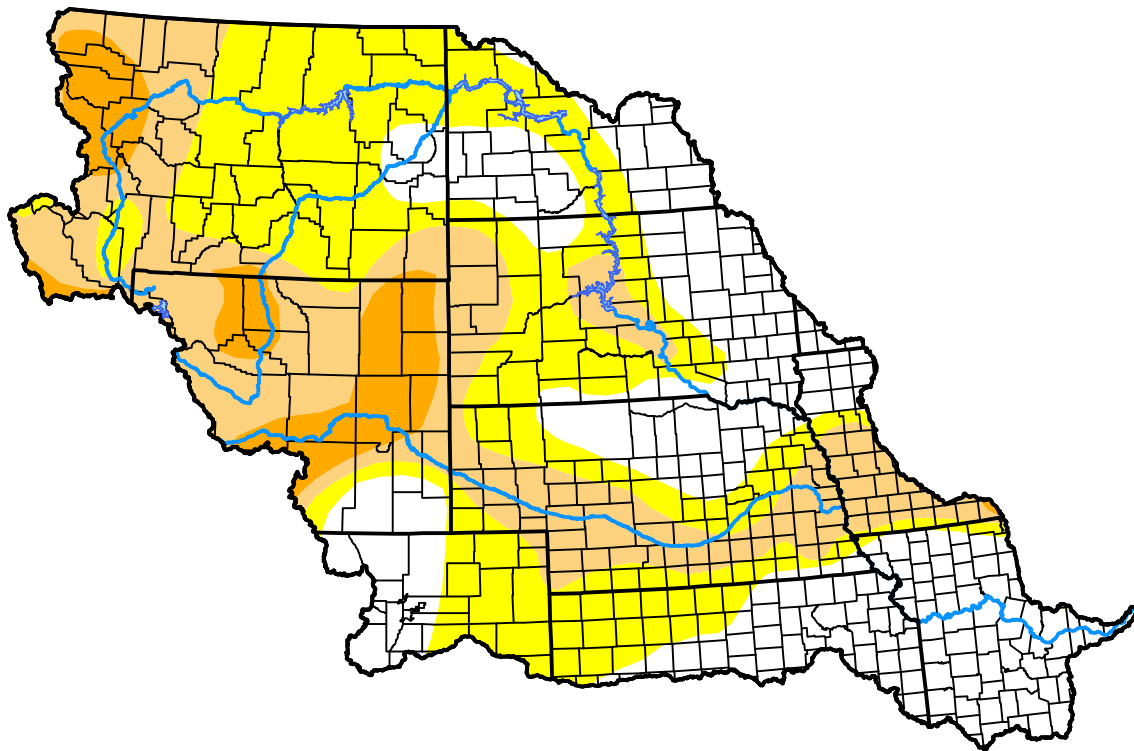


# U.S. Drought Monitor

## Missouri Watershed

**October 4, 2005**  
 (Released Thursday, Oct. 6, 2005)  
 Valid 8 a.m. EDT



*Drought Conditions (Percent Area)*

	None	D0	D1	D2	D3	D4
<b>Current</b>	32.86	34.42	24.99	7.74	0.00	0.00
<b>Last Week</b> <i>09-29-2005</i>	33.63	34.23	24.44	7.70	0.00	0.00
<b>3 Months Ago</b> <i>07-07-2005</i>	42.77	24.27	20.67	12.29	0.00	0.00
<b>Start of Calendar Year</b> <i>01-06-2005</i>	24.37	20.77	19.00	20.50	11.75	3.62
<b>Start of Water Year</b> <i>09-29-2005</i>	33.63	34.23	24.44	7.70	0.00	0.00
<b>One Year Ago</b> <i>10-07-2004</i>	25.65	18.34	20.22	21.07	11.08	3.65

***Intensity:***

- None
- D0 Abnormally Dry
- D1 Moderate Drought
- D2 Severe Drought
- D3 Extreme Drought
- D4 Exceptional Drought

*The Drought Monitor focuses on broad-scale conditions. Local conditions may vary. For more information on the Drought Monitor, go to <https://droughtmonitor.unl.edu/About.aspx>*

***Author:***

Richard Tinker  
 CPC/NOAA/NWS/NCEP

