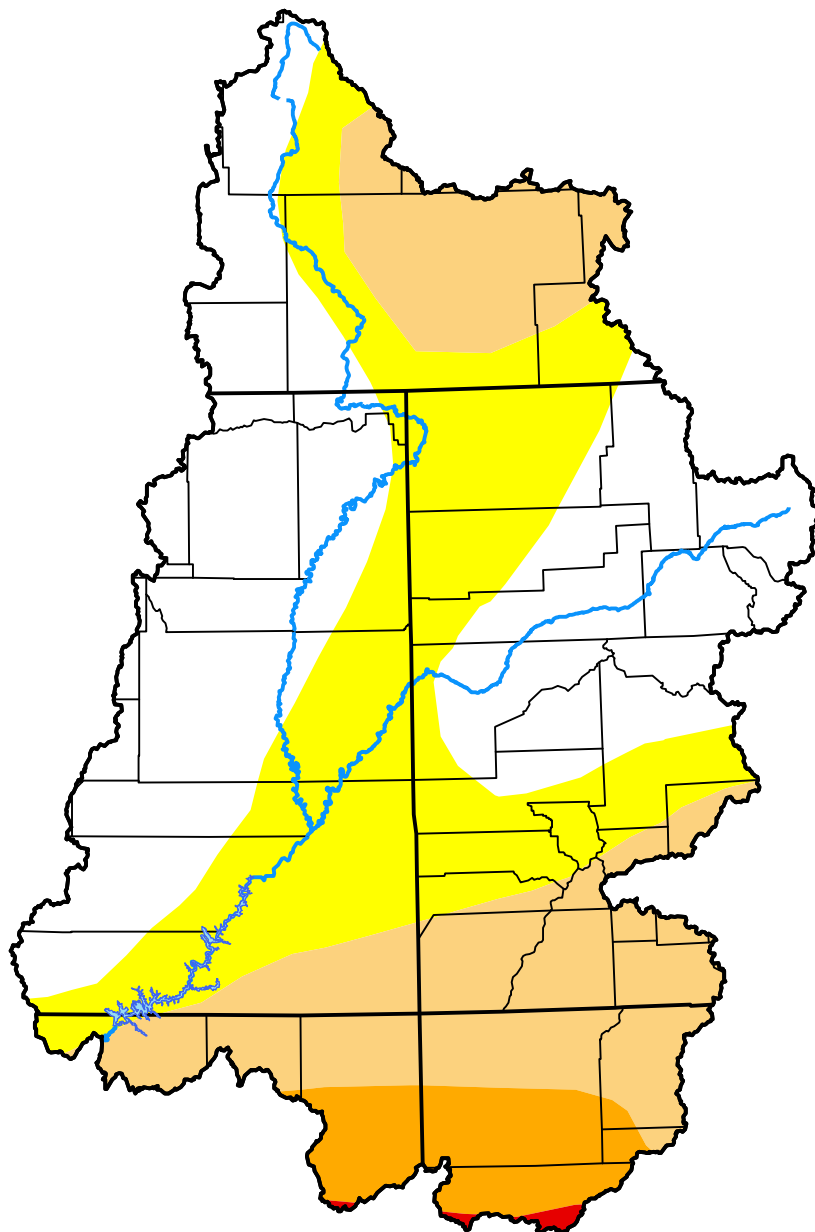


# U.S. Drought Monitor

## Upper Colorado Watershed

**April 25, 2006**  
 (Released Thursday, Apr. 27, 2006)

Valid 8 a.m. EDT



*Drought Conditions (Percent Area)*

	None	D0	D1	D2	D3	D4
<b>Current</b>	40.06	29.95	23.59	6.13	0.27	0.00
<b>Last Week</b> <i>04-20-2006</i>	40.06	33.05	20.49	6.13	0.27	0.00
<b>3 Months Ago</b> <i>01-26-2006</i>	41.26	31.77	26.88	0.09	0.00	0.00
<b>Start of Calendar Year</b> <i>01-05-2006</i>	44.08	36.02	19.90	0.00	0.00	0.00
<b>Start of Water Year</b> <i>09-29-2005</i>	44.63	30.22	17.54	7.61	0.00	0.00
<b>One Year Ago</b> <i>04-28-2005</i>	28.90	32.97	25.48	12.64	0.00	0.00

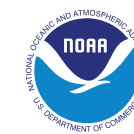
***Intensity:***

- None
- D0 Abnormally Dry
- D1 Moderate Drought
- D2 Severe Drought
- D3 Extreme Drought
- D4 Exceptional Drought

*The Drought Monitor focuses on broad-scale conditions. Local conditions may vary. For more information on the Drought Monitor, go to <https://droughtmonitor.unl.edu/About.aspx>*

***Author:***

Brad Rippey  
 U.S. Department of Agriculture



**droughtmonitor.unl.edu**