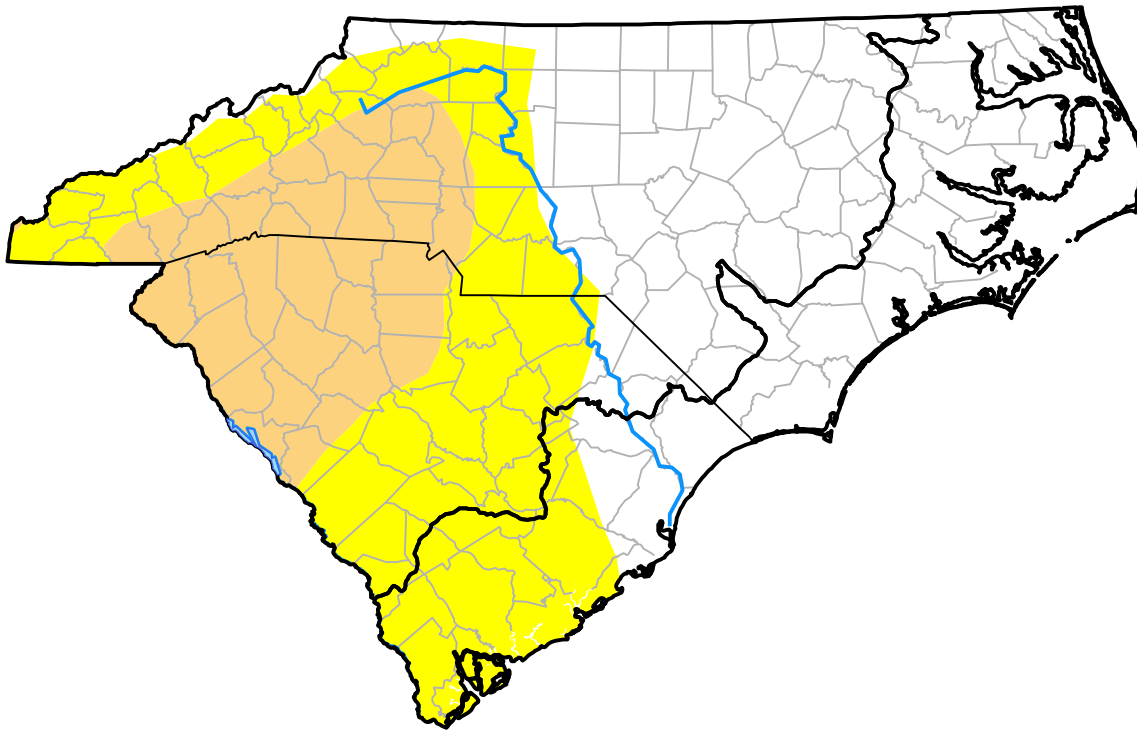


Carolinas RDEWS and Surrounding Areas

10:00 a.m. EDT

Drought Conditions (Percent Area)

	None	D0	D1	D2	D3	D4
Current	48.11	31.68	20.21	0.00	0.00	0.00
Last Week <i>07-20-2006</i>	48.16	32.60	19.24	0.00	0.00	0.00
3 Months Ago <i>04-27-2006</i>	3.93	38.74	41.42	15.91	0.00	0.00
Start of Calendar Year <i>01-05-2006</i>	92.44	7.56	0.00	0.00	0.00	0.00
Start of Water Year <i>09-29-2005</i>	28.11	52.60	19.29	0.00	0.00	0.00
One Year Ago <i>07-28-2005</i>	95.92	4.08	0.00	0.00	0.00	0.00



Intensity:

- None
- D0 Abnormally Dry
- D1 Moderate Drought
- D2 Severe Drought
- D3 Extreme Drought
- D4 Exceptional Drought

The Drought Monitor focuses on broad-scale conditions. Local conditions may vary. For more information on the Drought Monitor, go to <https://droughtmonitor.unl.edu/About.aspx>

Author:

Candace Tankersley
NOAA/NESDIS/NCEI

