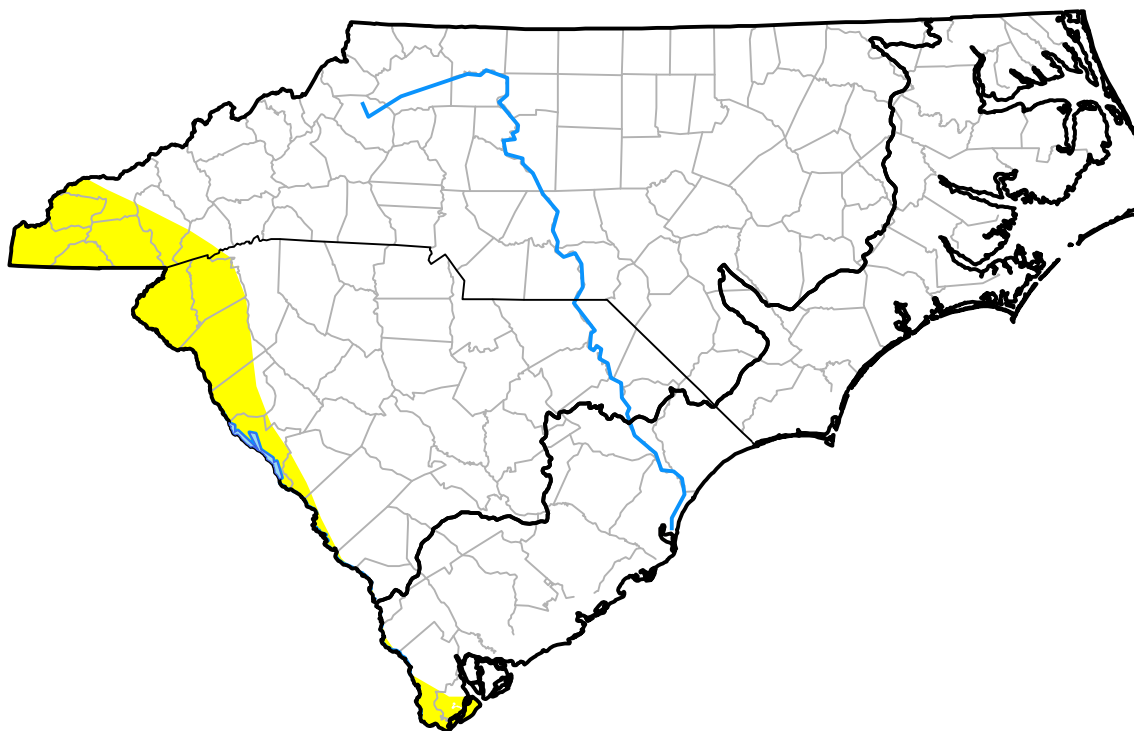


# Carolinas RDEWS and Surrounding Areas

Drought Conditions (Percent Area)

	None	D0	D1	D2	D3	D4
<b>Current</b>	93.20	6.80	0.00	0.00	0.00	0.00
<b>Last Week</b> <i>09-21-2006</i>	93.51	5.93	0.56	0.00	0.00	0.00
<b>3 Months Ago</b> <i>06-29-2006</i>	57.08	24.75	18.17	0.00	0.00	0.00
<b>Start of Calendar Year</b> <i>01-05-2006</i>	92.44	7.56	0.00	0.00	0.00	0.00
<b>Start of Water Year</b> <i>09-29-2005</i>	28.11	52.60	19.29	0.00	0.00	0.00
<b>One Year Ago</b> <i>09-29-2005</i>	28.11	52.60	19.29	0.00	0.00	0.00



Intensity:

- None
- D0 Abnormally Dry
- D1 Moderate Drought
- D2 Severe Drought
- D3 Extreme Drought
- D4 Exceptional Drought

The Drought Monitor focuses on broad-scale conditions. Local conditions may vary. For more information on the Drought Monitor, go to <https://droughtmonitor.unl.edu/About.aspx>

Author:

Ned Guttman  
NOAA/NESDIS/NCEI

