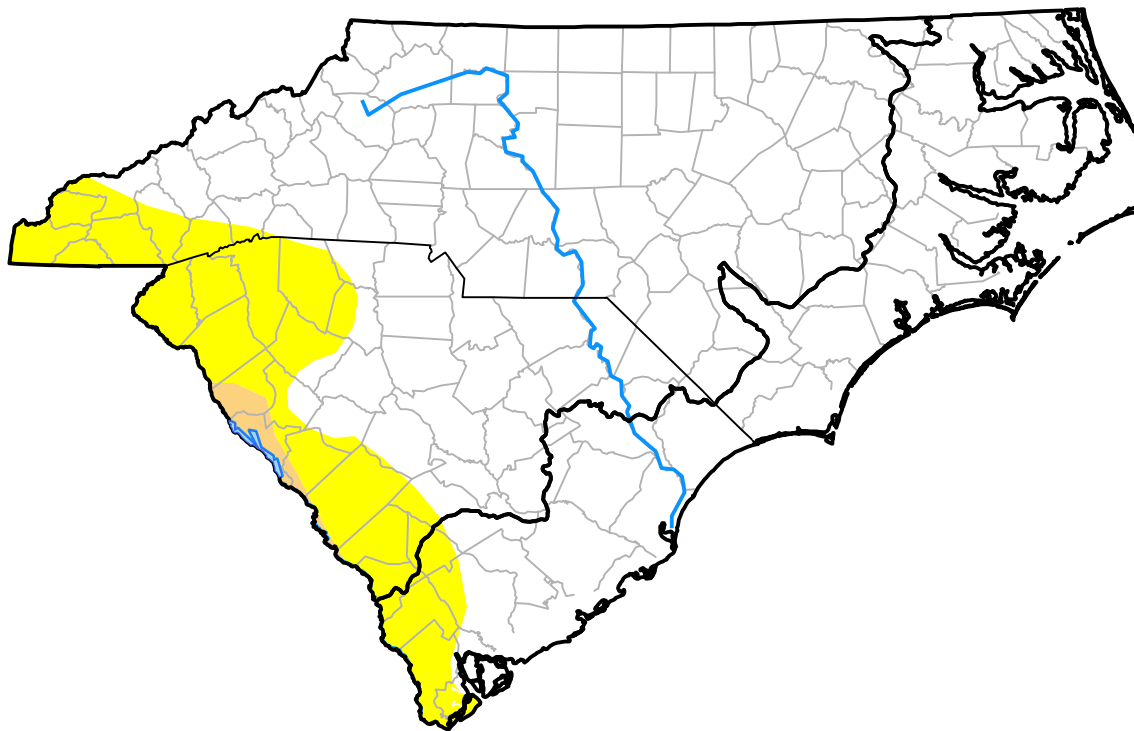


Carolinas RDEWS and Surrounding Areas

Drought Conditions (Percent Area)

	None	D0-D4	D1-D4	D2-D4	D3-D4	D4
Current	83.85	16.15	0.94	0.00	0.00	0.00
Last Week <i>10-19-2006</i>	83.49	16.51	5.89	0.00	0.00	0.00
3 Months Ago <i>07-27-2006</i>	48.11	51.89	20.21	0.00	0.00	0.00
Start of Calendar Year <i>01-05-2006</i>	92.44	7.56	0.00	0.00	0.00	0.00
Start of Water Year <i>09-28-2006</i>	93.20	6.80	0.00	0.00	0.00	0.00
One Year Ago <i>10-26-2005</i>	66.59	33.41	7.29	0.00	0.00	0.00



Intensity:

- None
- D0 Abnormally Dry
- D1 Moderate Drought
- D2 Severe Drought
- D3 Extreme Drought
- D4 Exceptional Drought

The Drought Monitor focuses on broad-scale conditions. Local conditions may vary. For more information on the Drought Monitor, go to <https://droughtmonitor.unl.edu/About.aspx>

Author:

Brad Rippey
U.S. Department of Agriculture

