

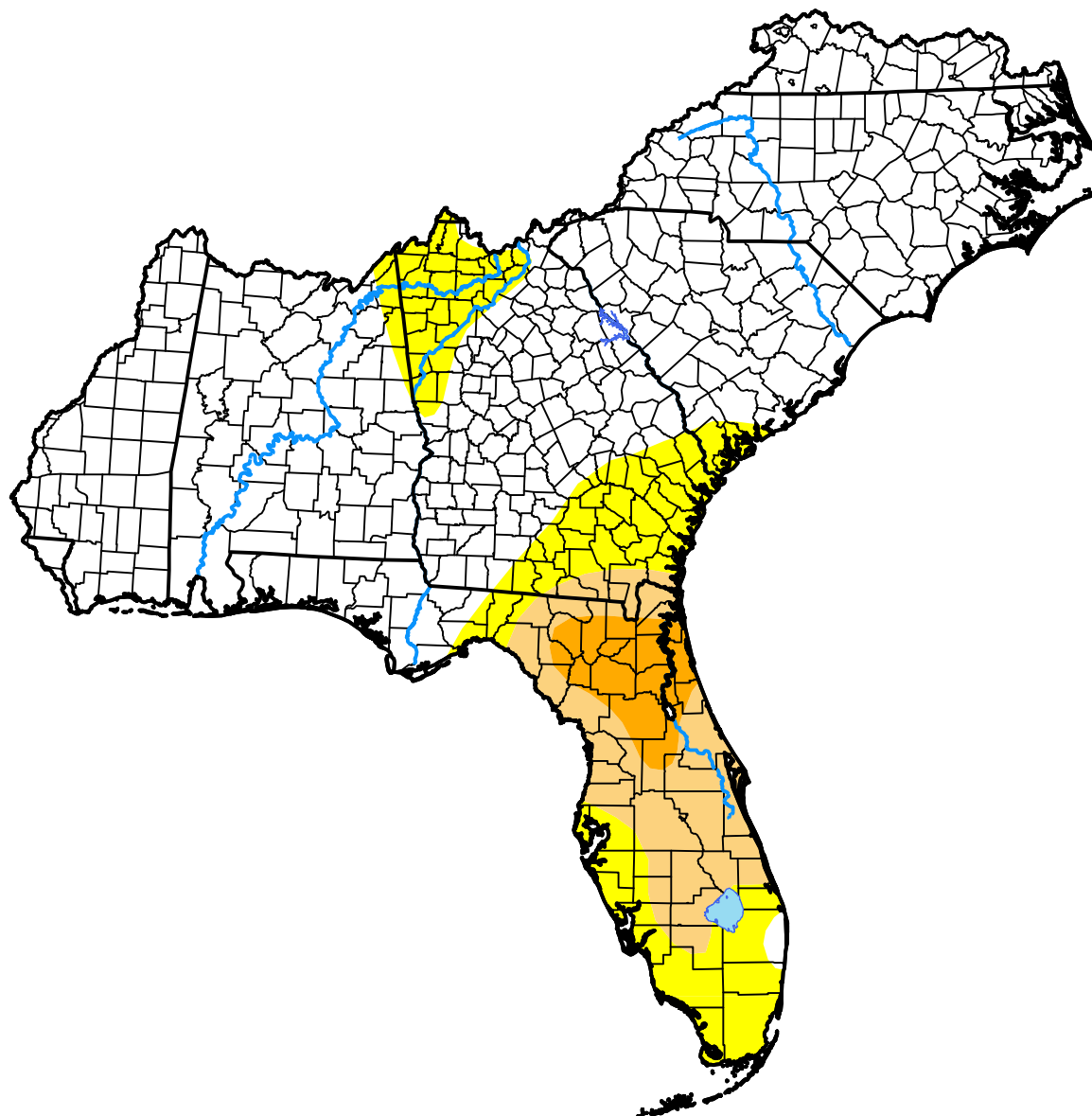
*U.S. Drought Monitor*

# South Atlantic-Gulf Watershed

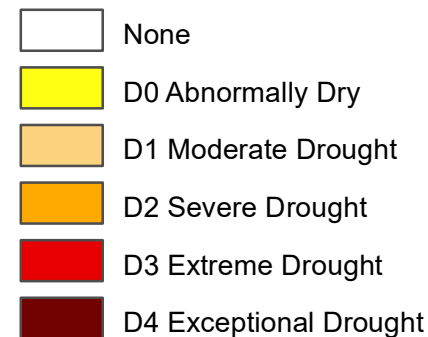
**January 30, 2007**

*(Released Thursday, Feb. 1, 2007)*

Valid 7 a.m. EST



**Intensity:**



*The Drought Monitor focuses on broad-scale conditions. Local conditions may vary. For more information on the Drought Monitor, go to <https://droughtmonitor.unl.edu/About.aspx>*

**Author:**

Brian Fuchs  
National Drought Mitigation Center



**droughtmonitor.unl.edu**