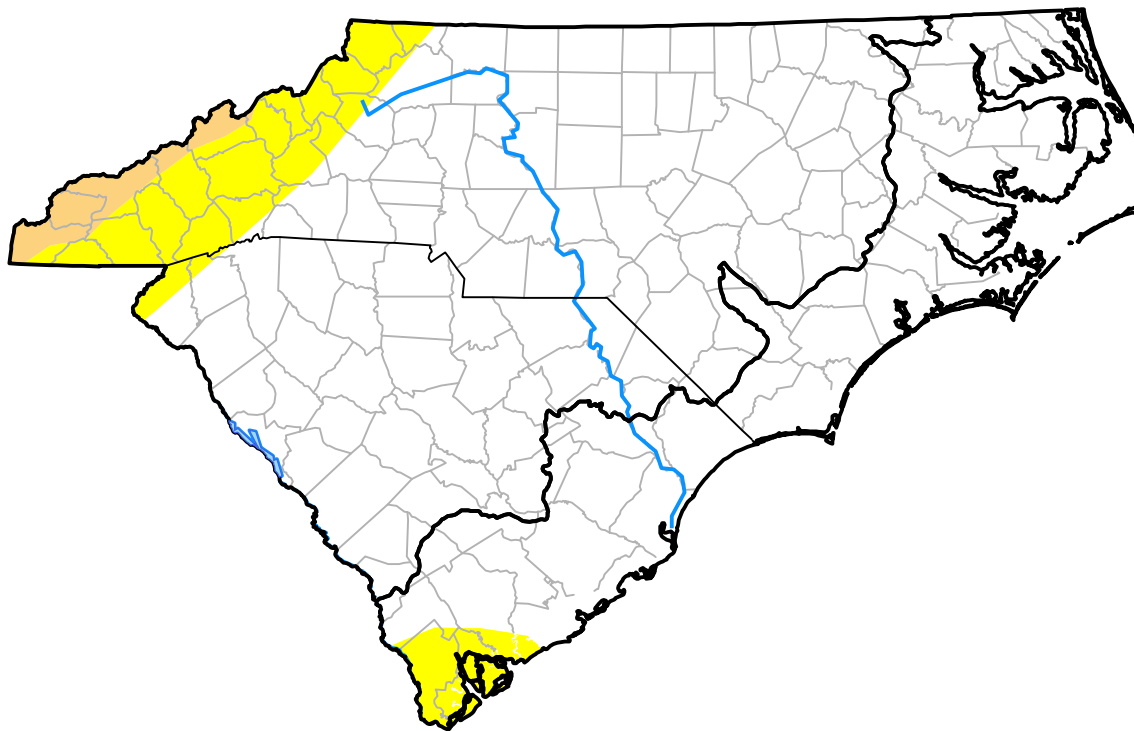


Carolinas RDEWS and Surrounding Areas

Drought Conditions (Percent Area)

	None	D0-D4	D1-D4	D2-D4	D3-D4	D4
Current	88.32	11.68	1.98	0.00	0.00	0.00
Last Week <i>02-08-2007</i>	95.83	4.17	0.00	0.00	0.00	0.00
3 Months Ago <i>11-16-2006</i>	89.53	10.47	5.62	0.00	0.00	0.00
Start of Calendar Year <i>01-04-2007</i>	96.43	3.57	0.00	0.00	0.00	0.00
Start of Water Year <i>09-28-2006</i>	93.20	6.80	0.00	0.00	0.00	0.00
One Year Ago <i>02-16-2006</i>	78.50	21.50	0.00	0.00	0.00	0.00



Intensity:

- None
- D0 Abnormally Dry
- D1 Moderate Drought
- D2 Severe Drought
- D3 Extreme Drought
- D4 Exceptional Drought

The Drought Monitor focuses on broad-scale conditions. Local conditions may vary. For more information on the Drought Monitor, go to <https://droughtmonitor.unl.edu/About.aspx>

Author:

Richard Tinker
CPC/NOAA/NWS/NCEP

