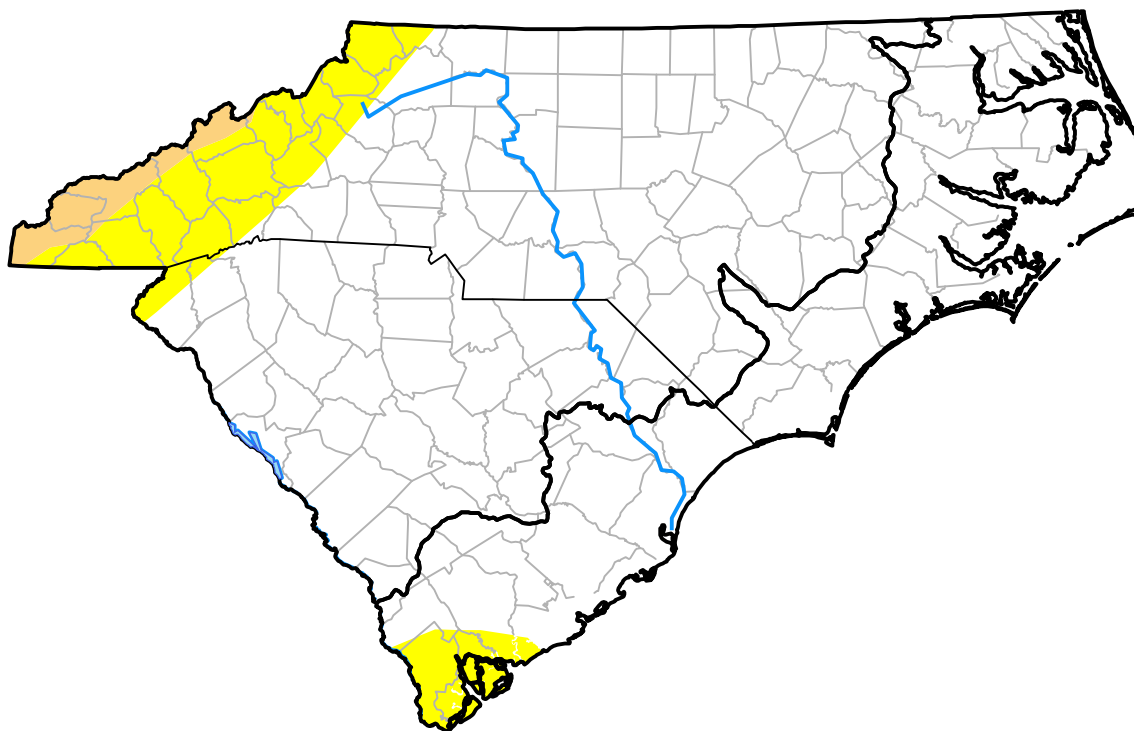


U.S. Drought Monitor

Coastal Carolinas RDEWS

February 13, 2007
 (Released Thursday, Feb. 15, 2007)

Valid 7 a.m. EST



Drought Conditions (Percent Area)

	None	D0-D4	D1-D4	D2-D4	D3-D4	D4
Current	90.91	9.09	0.00	0.00	0.00	0.00
Last Week <i>02-08-2007</i>	90.91	9.09	0.00	0.00	0.00	0.00
3 Months Ago <i>11-16-2006</i>	93.41	6.59	2.18	0.00	0.00	0.00
Start of Calendar Year <i>01-04-2007</i>	93.06	6.94	0.00	0.00	0.00	0.00
Start of Water Year <i>09-28-2006</i>	97.91	2.09	0.00	0.00	0.00	0.00
One Year Ago <i>02-16-2006</i>	100.00	0.00	0.00	0.00	0.00	0.00

Intensity:



The Drought Monitor focuses on broad-scale conditions. Local conditions may vary. For more information on the Drought Monitor, go to <https://droughtmonitor.unl.edu/About.aspx>

Author:

Richard Tinker
 CPC/NOAA/NWS/NCEP



droughtmonitor.unl.edu