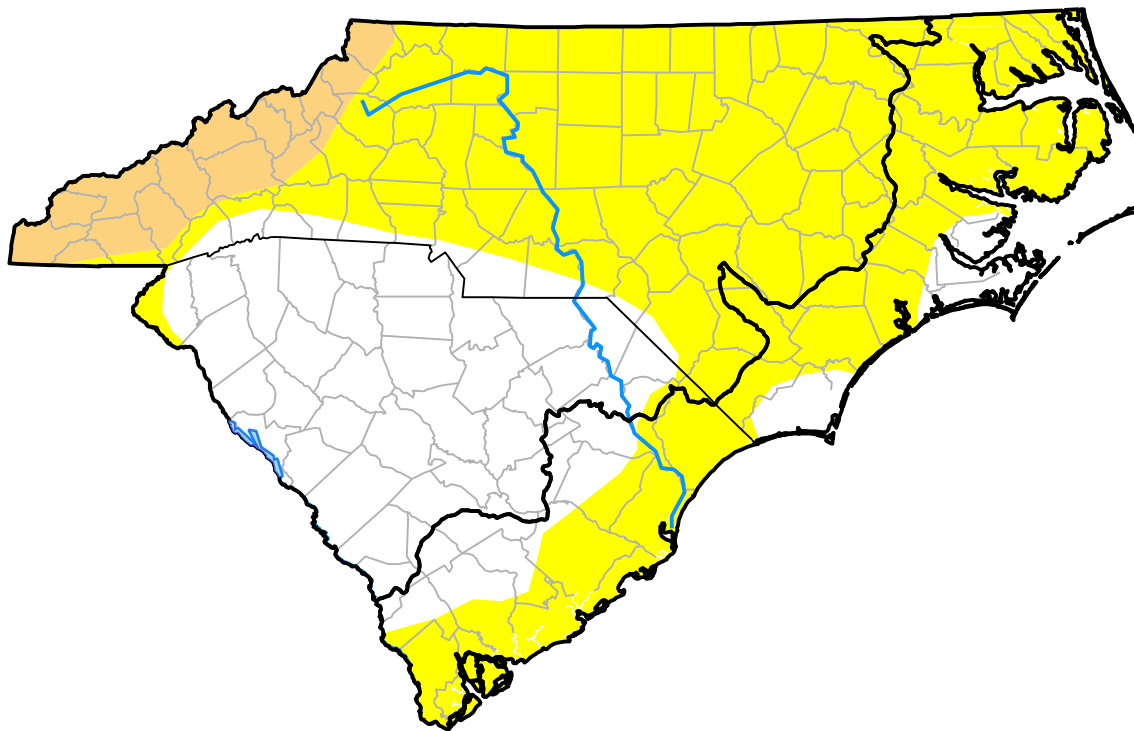


# Carolinas RDEWS and Surrounding Areas

(Released Thursday, Mar. 15, 2007)  
 10:00 a.m. EDT

Drought Conditions (Percent Area)

	None	D0-D4	D1-D4	D2-D4	D3-D4	D4
<b>Current</b>	35.09	64.91	7.12	0.00	0.00	0.00
<b>Last Week</b> <i>03-08-2007</i>	92.85	7.15	0.59	0.00	0.00	0.00
<b>3 Months Ago</b> <i>12-14-2006</i>	97.38	2.62	0.00	0.00	0.00	0.00
<b>Start of Calendar Year</b> <i>01-04-2007</i>	96.43	3.57	0.00	0.00	0.00	0.00
<b>Start of Water Year</b> <i>09-28-2006</i>	93.20	6.80	0.00	0.00	0.00	0.00
<b>One Year Ago</b> <i>03-16-2006</i>	18.82	81.18	19.15	0.00	0.00	0.00



Intensity:



The Drought Monitor focuses on broad-scale conditions. Local conditions may vary. For more information on the Drought Monitor, go to <https://droughtmonitor.unl.edu/About.aspx>

Author:

Richard Heim  
 NCEI/NOAA

