

U.S. Drought Monitor

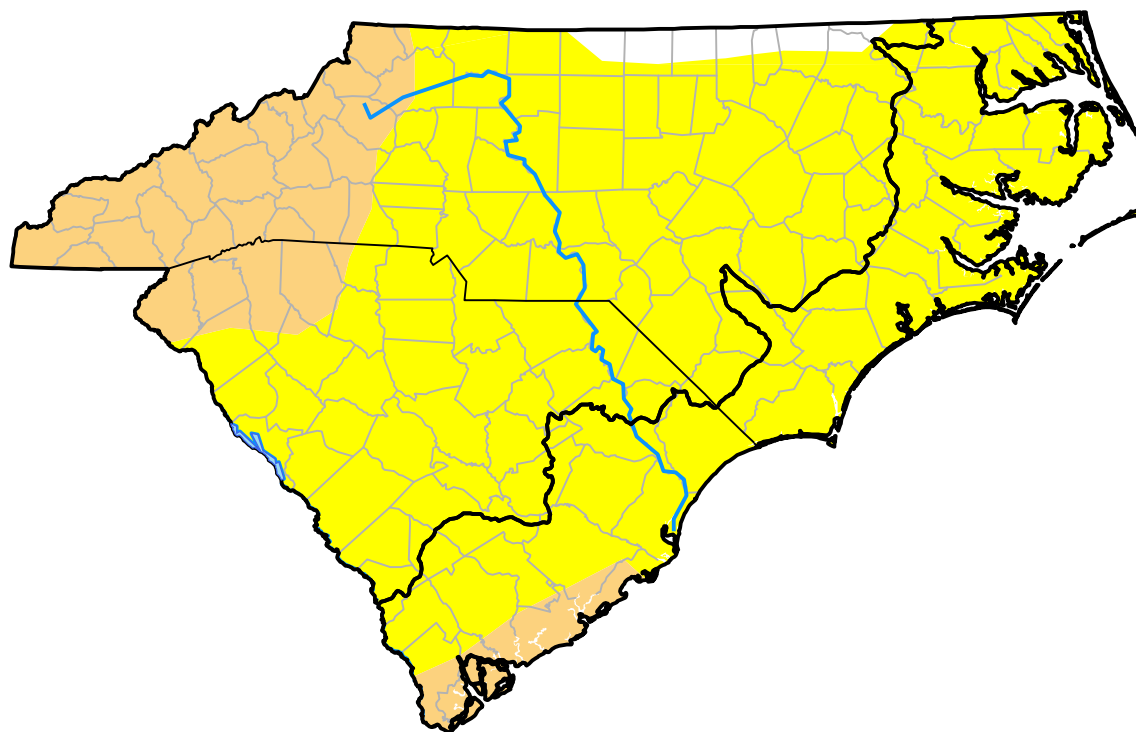
Coastal Carolinas RDEWS

April 10, 2007
(Released Thursday, Apr. 12, 2007)

Valid 8 a.m. EDT

Drought Conditions (Percent Area)

	None	D0-D4	D1-D4	D2-D4	D3-D4	D4
Current	0.00	100.00	12.81	0.00	0.00	0.00
Last Week <i>04-05-2007</i>	0.00	100.00	0.00	0.00	0.00	0.00
3 Months Ago <i>01-11-2007</i>	93.06	6.94	0.00	0.00	0.00	0.00
Start of Calendar Year <i>01-04-2007</i>	93.06	6.94	0.00	0.00	0.00	0.00
Start of Water Year <i>09-28-2006</i>	97.91	2.09	0.00	0.00	0.00	0.00
One Year Ago <i>04-13-2006</i>	38.40	61.60	0.84	0.00	0.00	0.00



Intensity:



The Drought Monitor focuses on broad-scale conditions. Local conditions may vary. For more information on the Drought Monitor, go to <https://droughtmonitor.unl.edu/About.aspx>

Author:

Thomas Heddinghaus
 CPC/NOAA



droughtmonitor.unl.edu