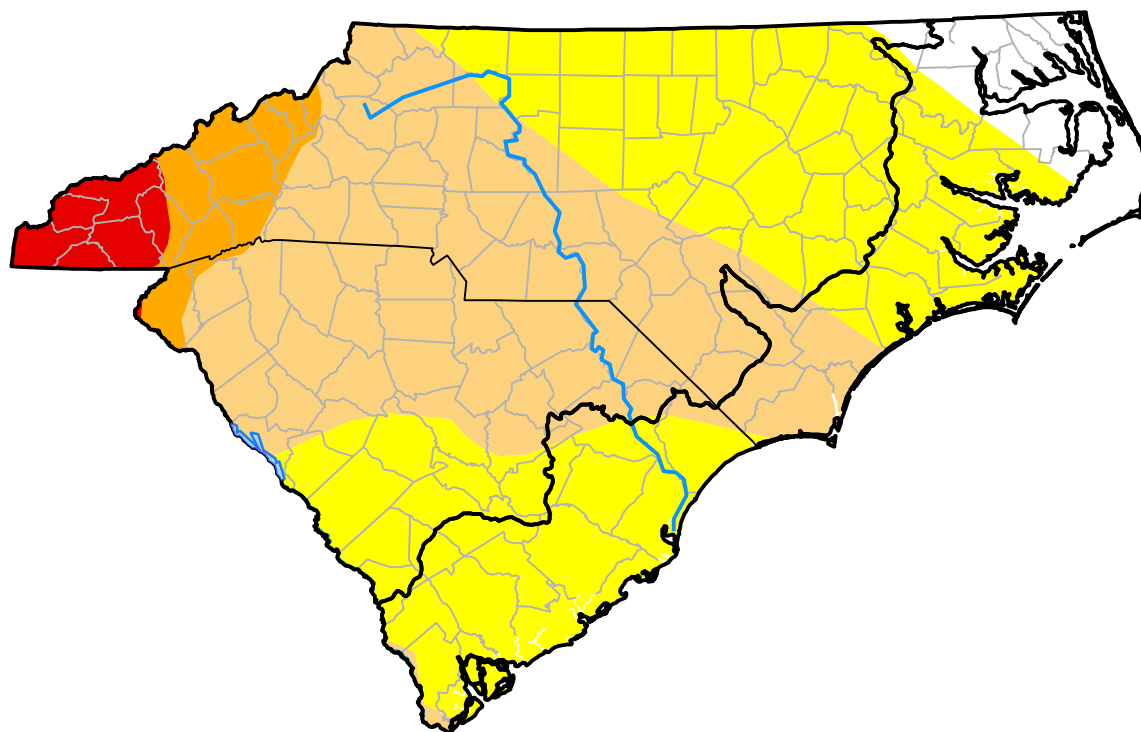


U.S. Drought Monitor

Coastal Carolinas RDEWS

June 5, 2007
 (Released Thursday, Jun. 7, 2007)
 Valid 8 a.m. EDT



Drought Conditions (Percent Area)

	None	D0	D1	D2	D3	D4
Current	20.29	66.46	13.24	0.00	0.00	0.00
Last Week <i>05-31-2007</i>	20.29	10.92	59.04	9.46	0.28	0.00
3 Months Ago <i>03-08-2007</i>	90.79	9.21	0.00	0.00	0.00	0.00
Start of Calendar Year <i>01-04-2007</i>	93.06	6.94	0.00	0.00	0.00	0.00
Start of Water Year <i>09-28-2006</i>	97.91	2.09	0.00	0.00	0.00	0.00
One Year Ago <i>06-08-2006</i>	68.54	31.46	0.00	0.00	0.00	0.00

Intensity:



The Drought Monitor focuses on broad-scale conditions. Local conditions may vary. For more information on the Drought Monitor, go to <https://droughtmonitor.unl.edu/About.aspx>

Author:

Scott Stephens
 NOAA/NESDIS/NCEI



droughtmonitor.unl.edu