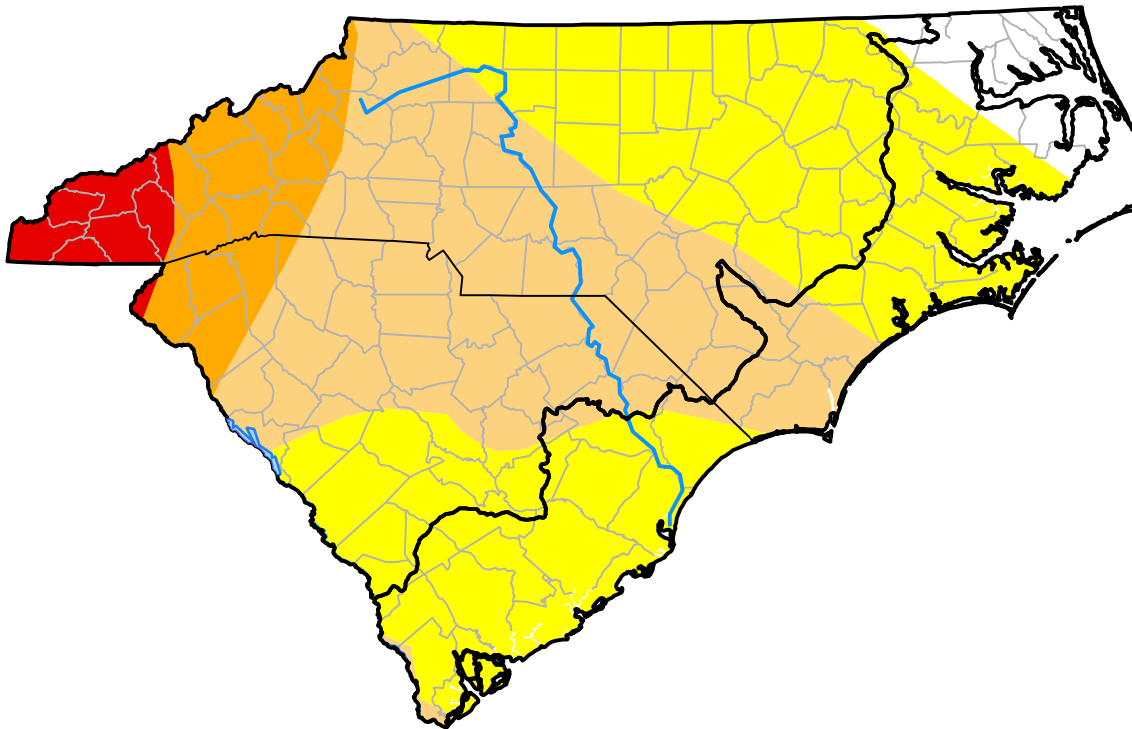


Carolinas RDEWS and Surrounding Areas

(Released Thursday, Jun. 14, 2007)
 10:00 a.m. EDT

Drought Conditions (Percent Area)

	None	D0-D4	D1-D4	D2-D4	D3-D4	D4
Current	4.55	95.45	49.47	12.15	3.37	0.00
Last Week <i>06-07-2007</i>	4.55	95.45	49.47	8.00	2.94	0.00
3 Months Ago <i>03-15-2007</i>	35.09	64.91	7.12	0.00	0.00	0.00
Start of Calendar Year <i>01-04-2007</i>	96.43	3.57	0.00	0.00	0.00	0.00
Start of Water Year <i>09-28-2006</i>	93.20	6.80	0.00	0.00	0.00	0.00
One Year Ago <i>06-15-2006</i>	29.24	70.76	44.69	5.58	0.00	0.00



Intensity:

- None
- D0 Abnormally Dry
- D1 Moderate Drought
- D2 Severe Drought
- D3 Extreme Drought
- D4 Exceptional Drought

The Drought Monitor focuses on broad-scale conditions. Local conditions may vary. For more information on the Drought Monitor, go to <https://droughtmonitor.unl.edu/About.aspx>

Author:

Richard Tinker
 CPC/NOAA/NWS/NCEP

