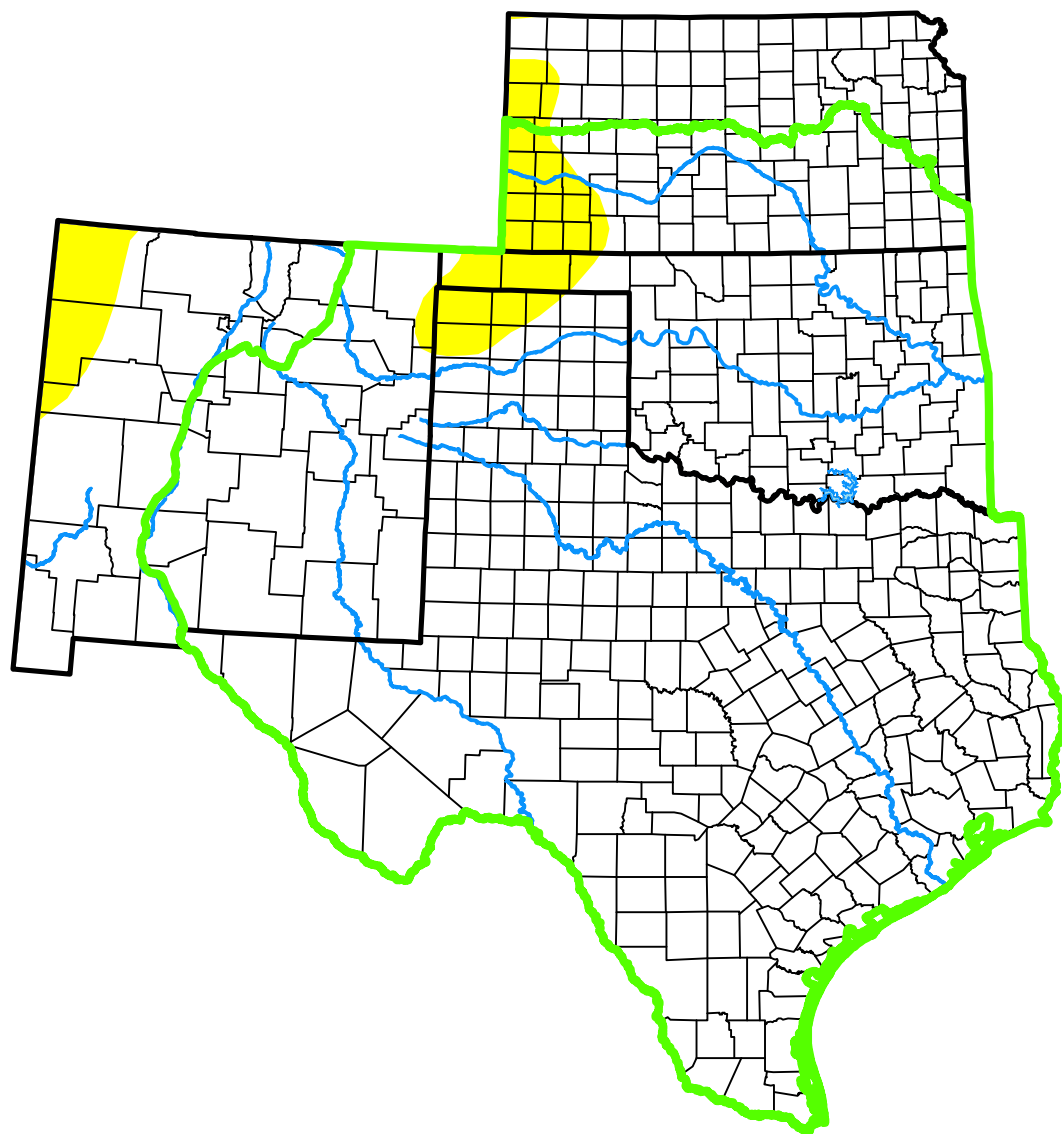


*U.S. Drought Monitor*

# Southern Plains DEWS and Surrounding Areas

**September 11, 2007**  
(Released Thursday, Sep. 13, 2007)  
Valid 8 a.m. EDT



**Intensity:**



*The Drought Monitor focuses on broad-scale conditions. Local conditions may vary. For more information on the Drought Monitor, go to <https://droughtmonitor.unl.edu/About.aspx>*

**Author:**

Richard Tinker  
CPC/NOAA/NWS/NCEP



**droughtmonitor.unl.edu**