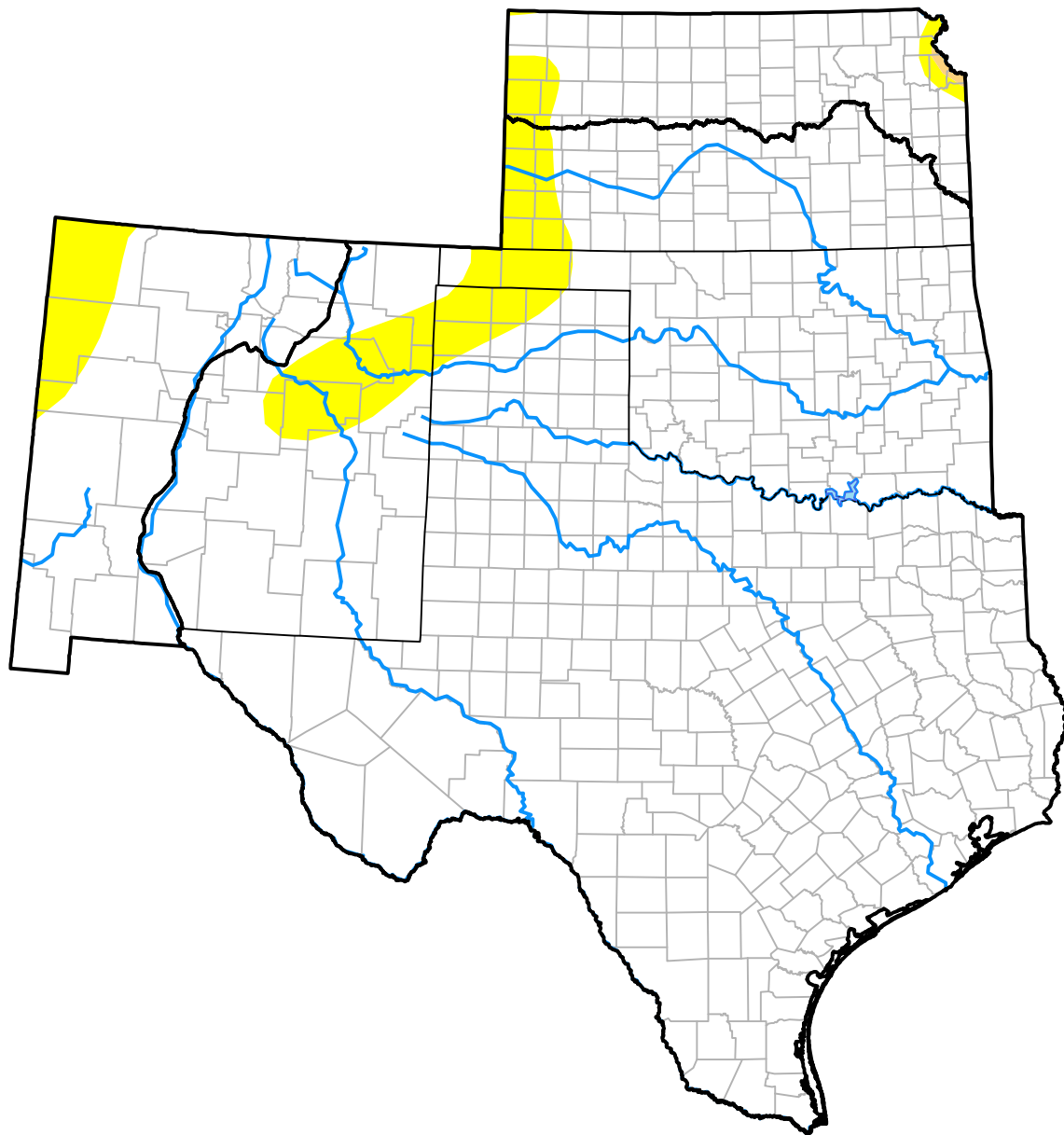


U.S. Drought Monitor

Southern Plains RDEWS

September 18, 2007
 (Released Thursday, Sep. 20, 2007)
 Valid 8 a.m. EDT



Drought Conditions (Percent Area)

	None	D0-D4	D1-D4	D2-D4	D3-D4	D4
Current	94.31	5.69	0.00	0.00	0.00	0.00
Last Week <i>09-13-2007</i>	96.16	3.84	0.00	0.00	0.00	0.00
3 Months Ago <i>06-21-2007</i>	89.11	10.89	2.58	1.35	0.00	0.00
Start of Calendar Year <i>01-04-2007</i>	32.71	67.29	38.98	25.71	13.90	2.19
Start of Water Year <i>09-28-2006</i>	35.09	64.91	48.50	32.55	14.32	0.95
One Year Ago <i>09-21-2006</i>	35.02	64.98	49.86	32.55	14.32	1.97

Intensity:

- None
- D0 Abnormally Dry
- D1 Moderate Drought
- D2 Severe Drought
- D3 Extreme Drought
- D4 Exceptional Drought

The Drought Monitor focuses on broad-scale conditions. Local conditions may vary. For more information on the Drought Monitor, go to <https://droughtmonitor.unl.edu/About.aspx>

Author:

David Miskus
 NOAA/NWS/NCEP/CPC

