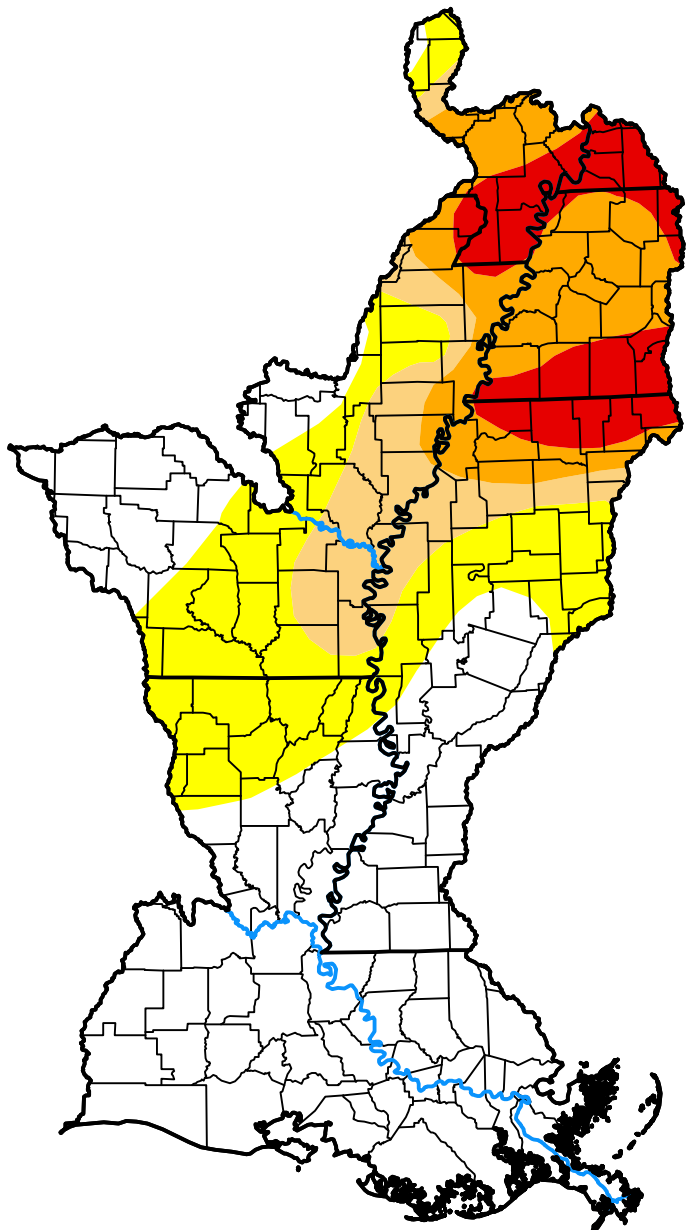


U.S. Drought Monitor

Lower Mississippi Watershed

September 25, 2007
 (Released Thursday, Sep. 27, 2007)
 Valid 8 a.m. EDT



Drought Conditions (Percent Area)

| | None | D0 | D1 | D2 | D3 | D4 |
|--|-------|-------|-------|-------|------|------|
| Current | 49.23 | 20.93 | 9.66 | 11.73 | 8.44 | 0.00 |
| Last Week <i>09-20-2007</i> | 49.23 | 20.93 | 9.68 | 11.72 | 8.44 | 0.00 |
| 3 Months Ago <i>06-28-2007</i> | 26.97 | 25.11 | 31.74 | 9.74 | 6.44 | 0.00 |
| Start of Calendar Year <i>01-04-2007</i> | 67.04 | 31.62 | 1.34 | 0.00 | 0.00 | 0.00 |
| Start of Water Year <i>09-28-2006</i> | 21.32 | 62.46 | 14.80 | 1.42 | 0.00 | 0.00 |
| One Year Ago <i>09-28-2006</i> | 21.32 | 62.46 | 14.80 | 1.42 | 0.00 | 0.00 |

Intensity:

- None
- D0 Abnormally Dry
- D1 Moderate Drought
- D2 Severe Drought
- D3 Extreme Drought
- D4 Exceptional Drought

The Drought Monitor focuses on broad-scale conditions. Local conditions may vary. For more information on the Drought Monitor, go to <https://droughtmonitor.unl.edu/About.aspx>

Author:

David Miskus
 NOAA/NWS/NCEP/CPC

