

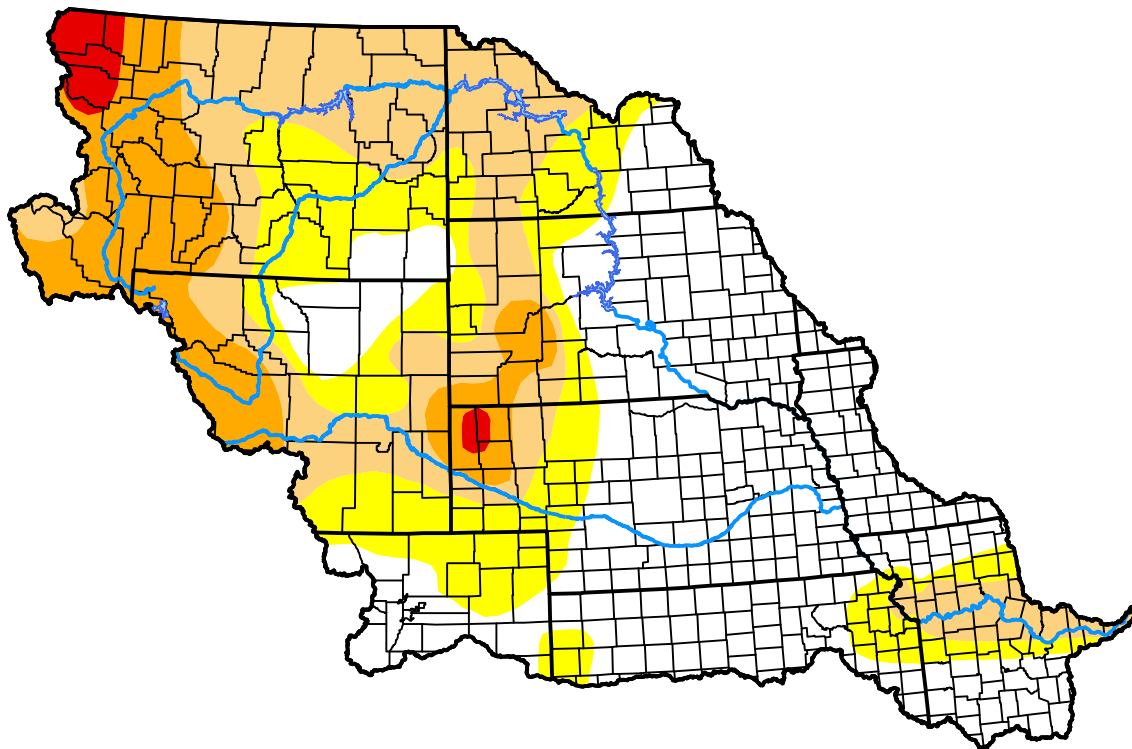
U.S. Drought Monitor

Missouri Watershed

October 9, 2007
 (Released Thursday, Oct. 11, 2007)
 Valid 8 a.m. EDT

Drought Conditions (Percent Area)

	None	D0-D4	D1-D4	D2-D4	D3-D4	D4
Current	42.15	57.85	36.91	14.06	1.64	0.00
Last Week <i>10-04-2007</i>	41.87	58.13	38.44	14.47	2.13	0.00
3 Months Ago <i>07-12-2007</i>	59.34	40.66	14.56	6.12	0.72	0.00
Start of Calendar Year <i>01-04-2007</i>	22.60	77.40	52.17	30.09	13.12	0.00
Start of Water Year <i>09-27-2007</i>	44.23	55.77	36.89	15.29	2.13	0.00
One Year Ago <i>10-12-2006</i>	11.19	88.81	74.25	47.06	16.88	0.00



Intensity:

- None
- D0 Abnormally Dry
- D1 Moderate Drought
- D2 Severe Drought
- D3 Extreme Drought
- D4 Exceptional Drought

The Drought Monitor focuses on broad-scale conditions. Local conditions may vary. For more information on the Drought Monitor, go to <https://droughtmonitor.unl.edu/About.aspx>

Author:

Jay Lawrimore
 NOAA/NESDIS/NCEI

