

# U.S. Drought Monitor

## Wind River and Surrounding Area

**October 23, 2007**

(Released Thursday, Oct. 25, 2007)

Valid 8 a.m. EDT

*Drought Conditions (Percent Area)*

	None	D0	D1	D2	D3	D4
<b>Current</b>	0.00	0.00	0.00	0.00	0.00	0.00
<b>Last Week</b> <i>10-18-2007</i>	0.00	0.00	0.00	0.00	0.00	0.00
<b>3 Months Ago</b> <i>07-26-2007</i>	0.00	0.00	0.00	0.00	0.00	0.00
<b>Start of Calendar Year</b> <i>01-04-2007</i>	0.00	0.00	0.00	0.00	0.00	0.00
<b>Start of Water Year</b> <i>09-27-2007</i>	0.00	0.00	0.00	0.00	0.00	0.00
<b>One Year Ago</b> <i>10-26-2006</i>	0.00	0.00	0.00	0.00	0.00	0.00

*Note: Statistics are for the surrounding area including the reservation.*

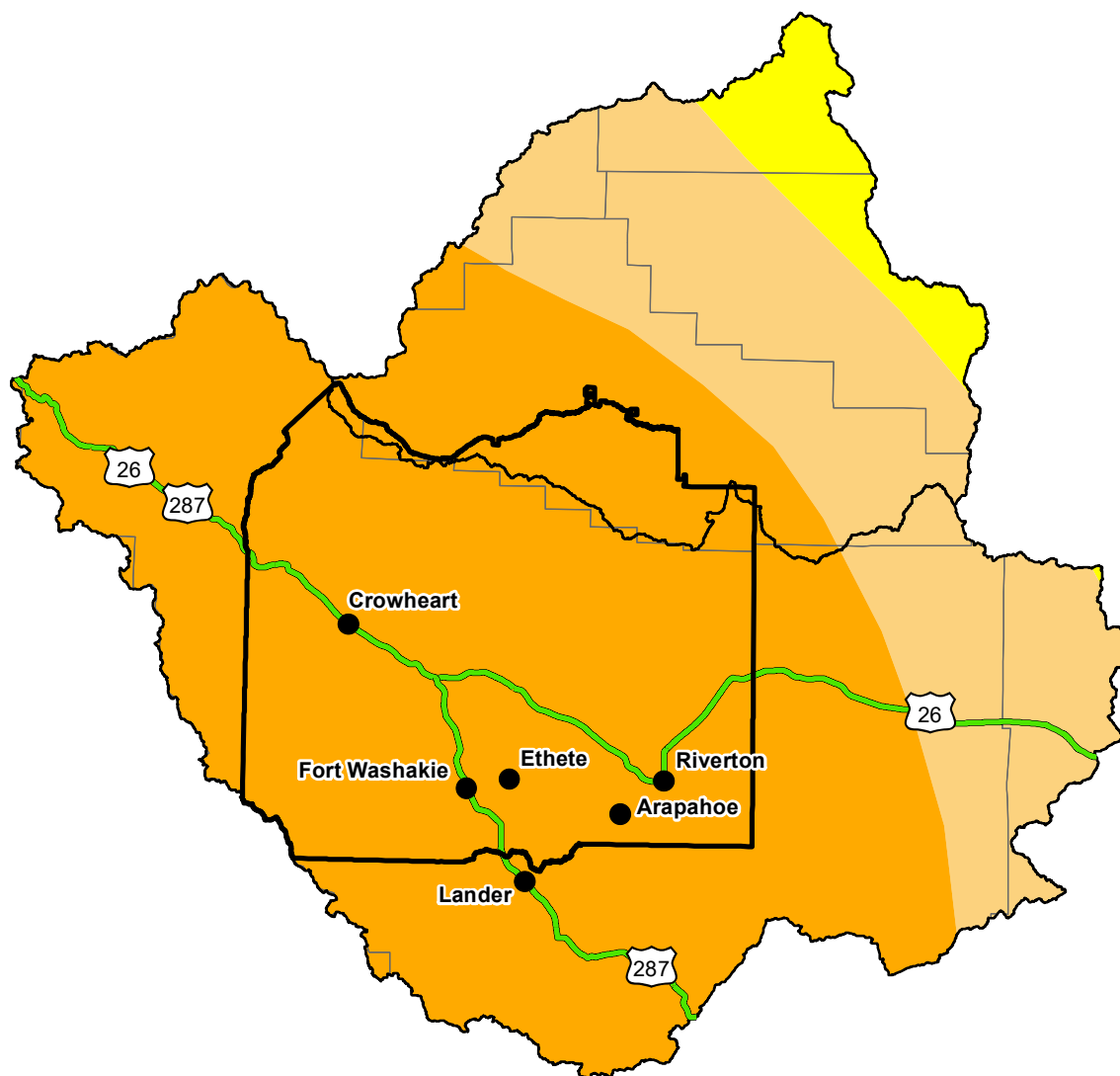
### Intensity:

 None	 D2 Severe Drought
 D0 Abnormally Dry	 D3 Extreme Drought
 D1 Moderate Drought	 D4 Exceptional Drought

*The Drought Monitor focuses on broad-scale conditions. Local conditions may vary. For more information on the Drought Monitor, go to <https://droughtmonitor.unl.edu/About.aspx>*

### Author:

Mark Svoboda  
National Drought Mitigation Center



<http://droughtmonitor.unl.edu/>