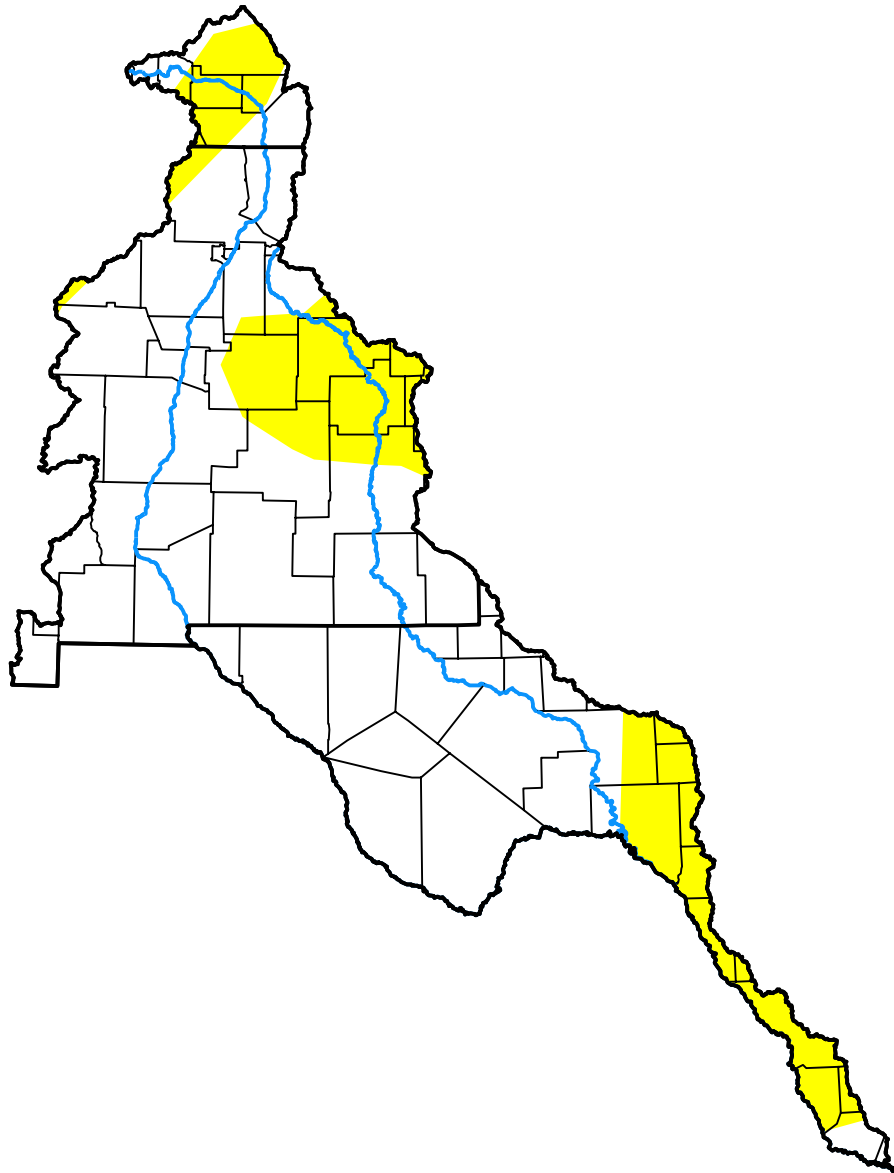


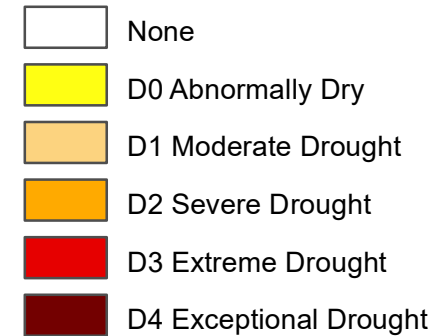
# *U.S. Drought Monitor*

# Rio Grande Watershed

**November 20, 2007**  
(Released Wednesday, Nov. 21, 2007)  
Valid 7 a.m. EST



## Intensity:



*The Drought Monitor focuses on broad-scale conditions. Local conditions may vary. For more information on the Drought Monitor, go to <https://droughtmonitor.unl.edu/About.aspx>*

## Author:

Richard Heim  
NCEI/NOAA



**droughtmonitor.unl.edu**