

U.S. Drought Monitor

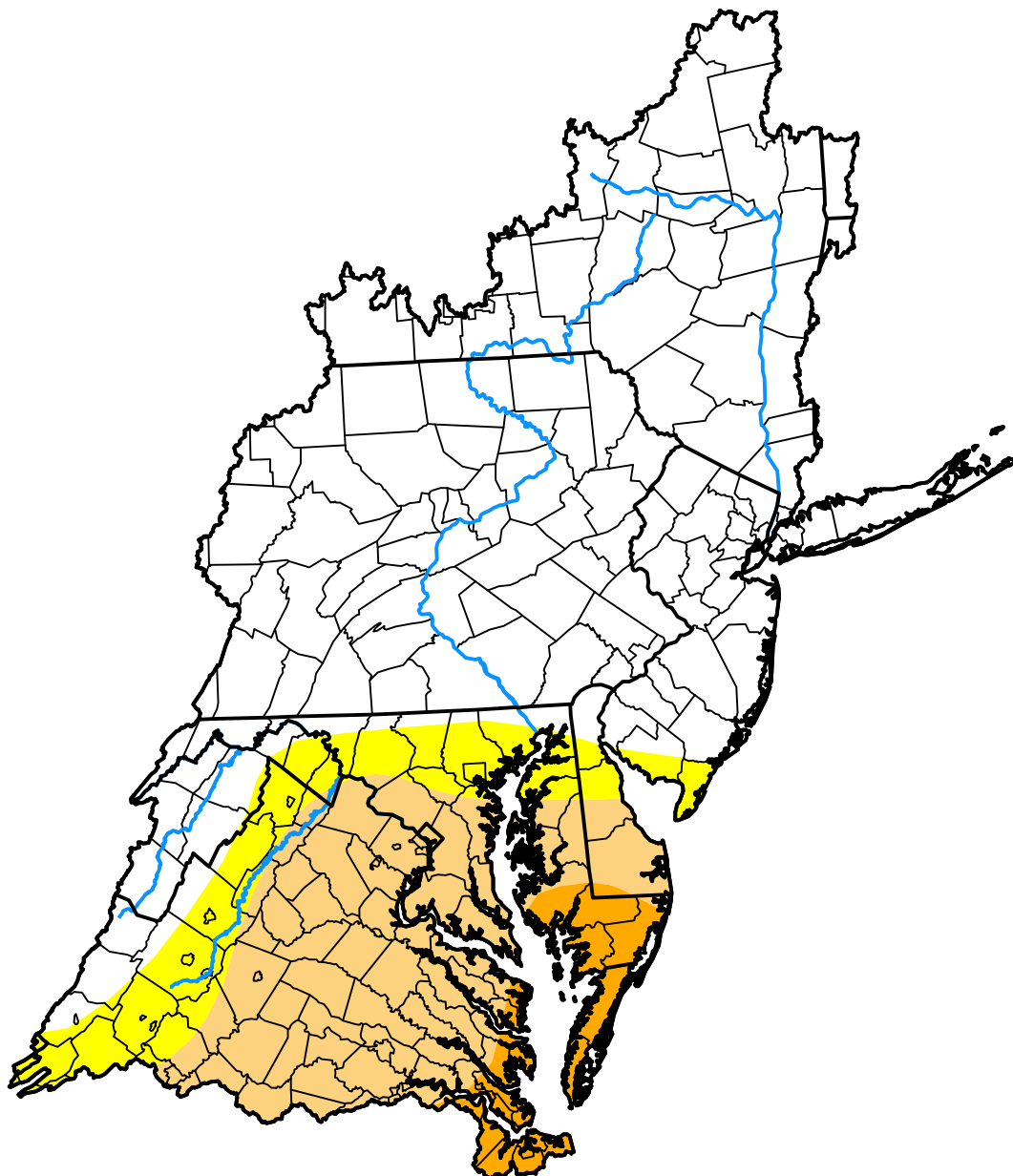
Mid Atlantic Watershed

January 15, 2008
 (Released Thursday, Jan. 17, 2008)

Valid 7 a.m. EST

Drought Conditions (Percent Area)

	None	D0	D1	D2	D3	D4
Current	67.96	9.35	18.93	3.76	0.00	0.00
Last Week <i>01-10-2008</i>	71.22	8.36	16.14	4.28	0.00	0.00
3 Months Ago <i>10-18-2007</i>	32.36	27.38	16.61	22.49	1.16	0.00
Start of Calendar Year <i>01-03-2008</i>	72.85	10.21	12.66	4.28	0.00	0.00
Start of Water Year <i>09-27-2007</i>	48.19	18.20	27.08	6.53	0.00	0.00
One Year Ago <i>01-18-2007</i>	99.30	0.70	0.00	0.00	0.00	0.00



Intensity:

- None
- D0 Abnormally Dry
- D1 Moderate Drought
- D2 Severe Drought
- D3 Extreme Drought
- D4 Exceptional Drought

The Drought Monitor focuses on broad-scale conditions. Local conditions may vary. For more information on the Drought Monitor, go to <https://droughtmonitor.unl.edu/About.aspx>

Author:

Richard Tinker
 CPC/NOAA/NWS/NCEP

