

# U.S. Drought Monitor

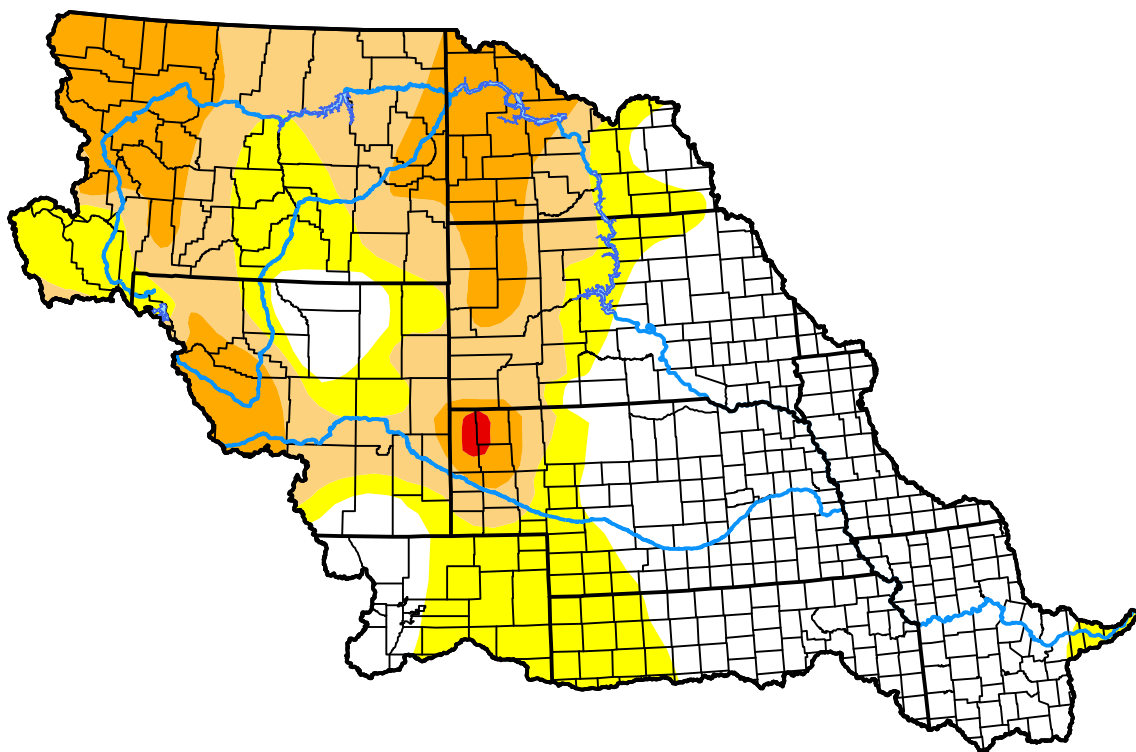
## Missouri Watershed

January 15, 2008  
 (Released Thursday, Jan. 17, 2008)

Valid 7 a.m. EST

Drought Conditions (Percent Area)

	None	D0	D1	D2	D3	D4
<b>Current</b>	40.06	22.17	21.54	15.96	0.26	0.00
<b>Last Week</b> <i>01-10-2008</i>	40.76	21.47	24.21	13.30	0.26	0.00
<b>3 Months Ago</b> <i>10-18-2007</i>	46.05	17.39	23.88	11.05	1.64	0.00
<b>Start of Calendar Year</b> <i>01-03-2008</i>	40.37	25.60	22.77	10.99	0.26	0.00
<b>Start of Water Year</b> <i>09-27-2007</i>	44.23	18.88	21.60	13.15	2.13	0.00
<b>One Year Ago</b> <i>01-18-2007</i>	24.14	23.09	20.18	17.42	15.18	0.00



**Intensity:**

- None
- D0 Abnormally Dry
- D1 Moderate Drought
- D2 Severe Drought
- D3 Extreme Drought
- D4 Exceptional Drought

The Drought Monitor focuses on broad-scale conditions. Local conditions may vary. For more information on the Drought Monitor, go to <https://droughtmonitor.unl.edu/About.aspx>

**Author:**

Richard Tinker  
 CPC/NOAA/NWS/NCEP



[droughtmonitor.unl.edu](https://droughtmonitor.unl.edu)