

U.S. Drought Monitor

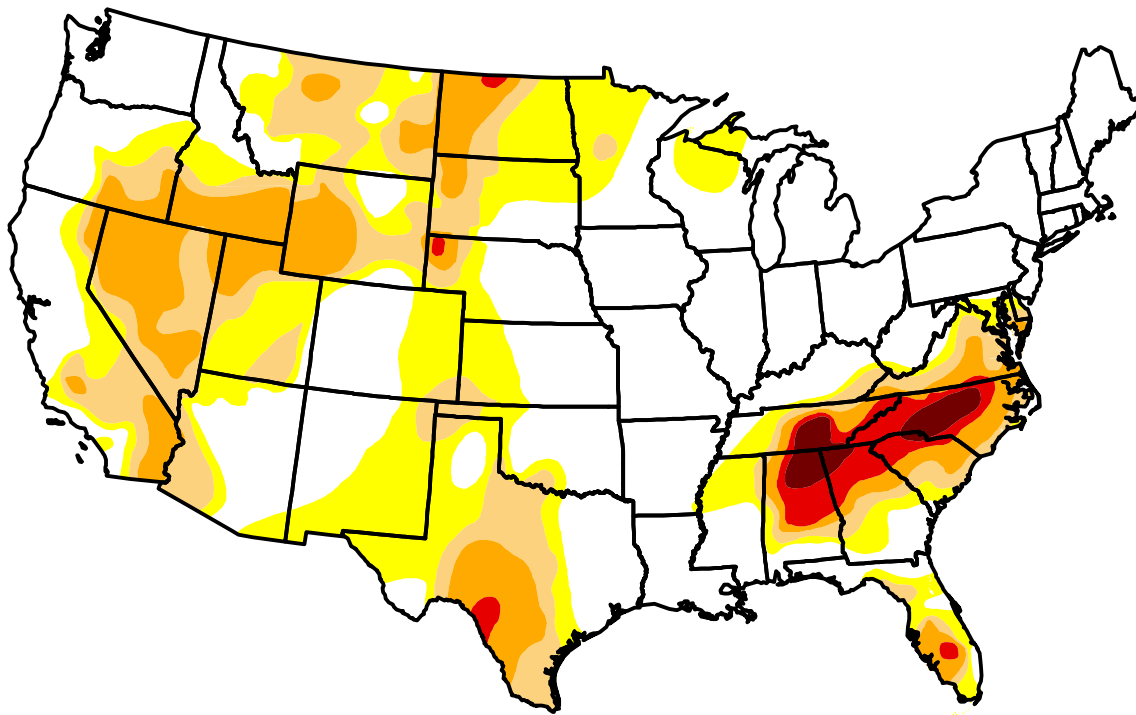
Total U.S.

February 26, 2008
(Released Thursday, Feb. 28, 2008)

Valid 7 a.m. EST

Drought Conditions (Percent Area)

	None	D0-D4	D1-D4	D2-D4	D3-D4	D4
Current	51.42	48.58	24.39	12.58	2.80	0.91
Last Week <i>2/19/2008</i>	48.48	51.52	24.82	12.79	3.36	1.72
3 Months Ago <i>11/27/2007</i>	49.97	50.03	31.28	18.99	6.72	2.41
Start of Calendar Year <i>1/1/2008</i>	49.27	50.73	29.21	17.04	4.81	1.99
Start of Water Year <i>9/25/2007</i>	47.87	52.13	36.80	25.09	9.86	1.90
One Year Ago <i>2/27/2007</i>	57.65	42.35	21.09	11.16	3.86	0.15

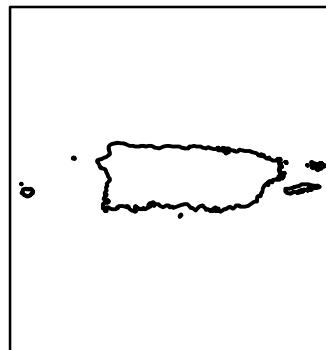
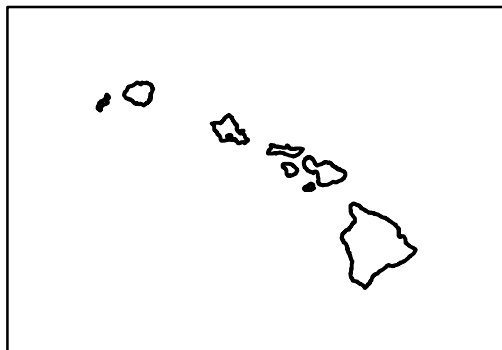
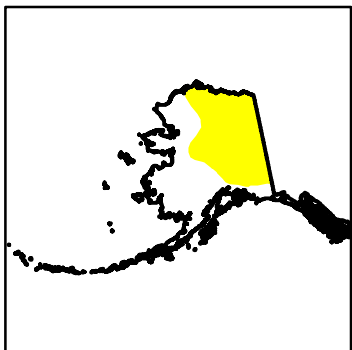


Intensity:

- D0 Abnormally Dry
- D1 Moderate Drought
- D2 Severe Drought
- D3 Extreme Drought
- D4 Exceptional Drought

The Drought Monitor focuses on broad-scale conditions. Local conditions may vary. See accompanying text summary for forecast statements.

Author:
 Brad Rippey
 U.S. Department of Agriculture



<http://droughtmonitor.unl.edu/>