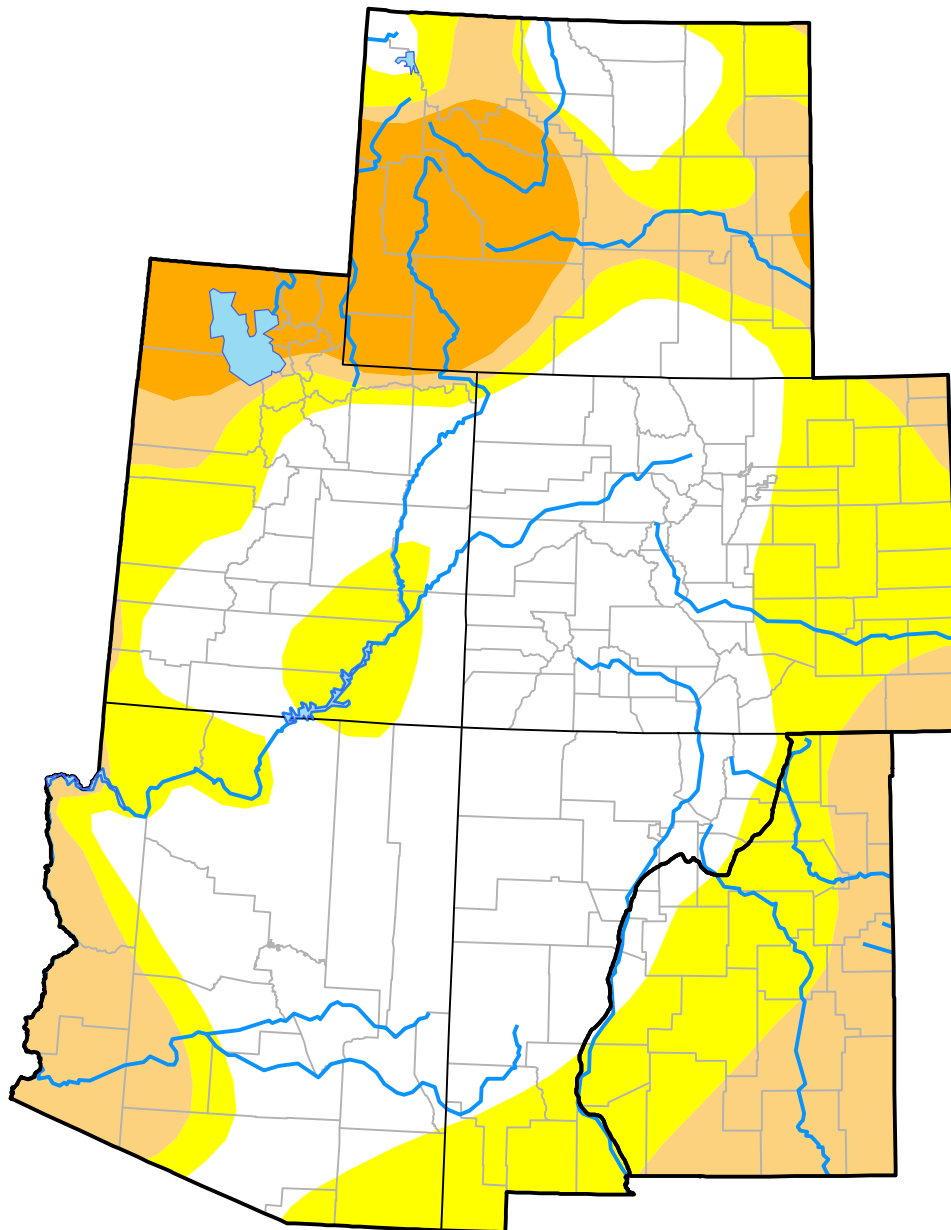


U.S. Drought Monitor

Intermountain West RDEWS

March 25, 2008
 (Released Thursday, Mar. 27, 2008)
 Valid 8 a.m. EDT



Drought Conditions (Percent Area)

	None	D0	D1	D2	D3	D4
Current	46.61	28.38	16.43	8.57	0.00	0.00
Last Week <i>03-20-2008</i>	46.74	28.26	16.29	8.71	0.00	0.00
3 Months Ago <i>12-27-2007</i>	34.93	26.83	15.54	22.70	0.00	0.00
Start of Calendar Year <i>01-03-2008</i>	34.93	26.83	15.54	22.70	0.00	0.00
Start of Water Year <i>09-27-2007</i>	37.58	19.38	16.74	19.61	6.69	0.00
One Year Ago <i>03-29-2007</i>	27.84	11.72	29.19	19.59	11.66	0.00

Intensity:

- None
- D0 Abnormally Dry
- D1 Moderate Drought
- D2 Severe Drought
- D3 Extreme Drought
- D4 Exceptional Drought

The Drought Monitor focuses on broad-scale conditions. Local conditions may vary. For more information on the Drought Monitor, go to <https://droughtmonitor.unl.edu/About.aspx>

Author:

Mark Svoboda
 National Drought Mitigation Center

