

U.S. Drought Monitor

Pacific Northwest Watershed

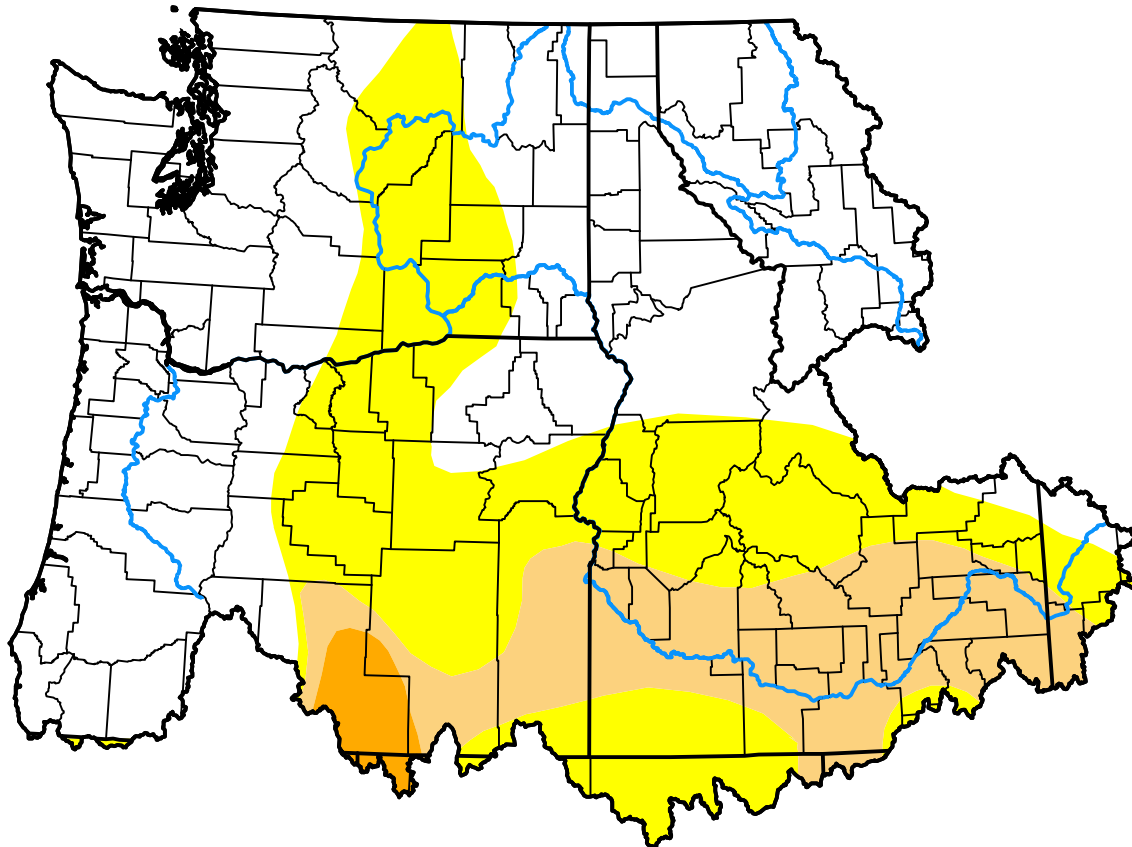
June 17, 2008

(Released Thursday, Jun. 19, 2008)

Valid 8 a.m. EDT

Drought Conditions (Percent Area)

	None	D0-D4	D1-D4	D2-D4	D3-D4	D4
Current	53.04	46.96	16.59	1.68	0.00	0.00
Last Week <i>06-12-2008</i>	57.40	42.60	16.52	1.68	0.00	0.00
3 Months Ago <i>03-20-2008</i>	57.65	42.35	27.14	17.42	0.00	0.00
Start of Calendar Year <i>01-03-2008</i>	40.25	59.75	52.18	23.87	0.00	0.00
Start of Water Year <i>09-27-2007</i>	13.95	86.05	60.55	55.22	14.79	0.00
One Year Ago <i>06-21-2007</i>	45.09	54.91	19.48	9.36	0.00	0.00



Intensity:



The Drought Monitor focuses on broad-scale conditions. Local conditions may vary. For more information on the Drought Monitor, go to <https://droughtmonitor.unl.edu/About.aspx>

Author:

Richard Tinker
CPC/NOAA/NWS/NCEP



droughtmonitor.unl.edu