

# U.S. Drought Monitor

## Klamath River Basin

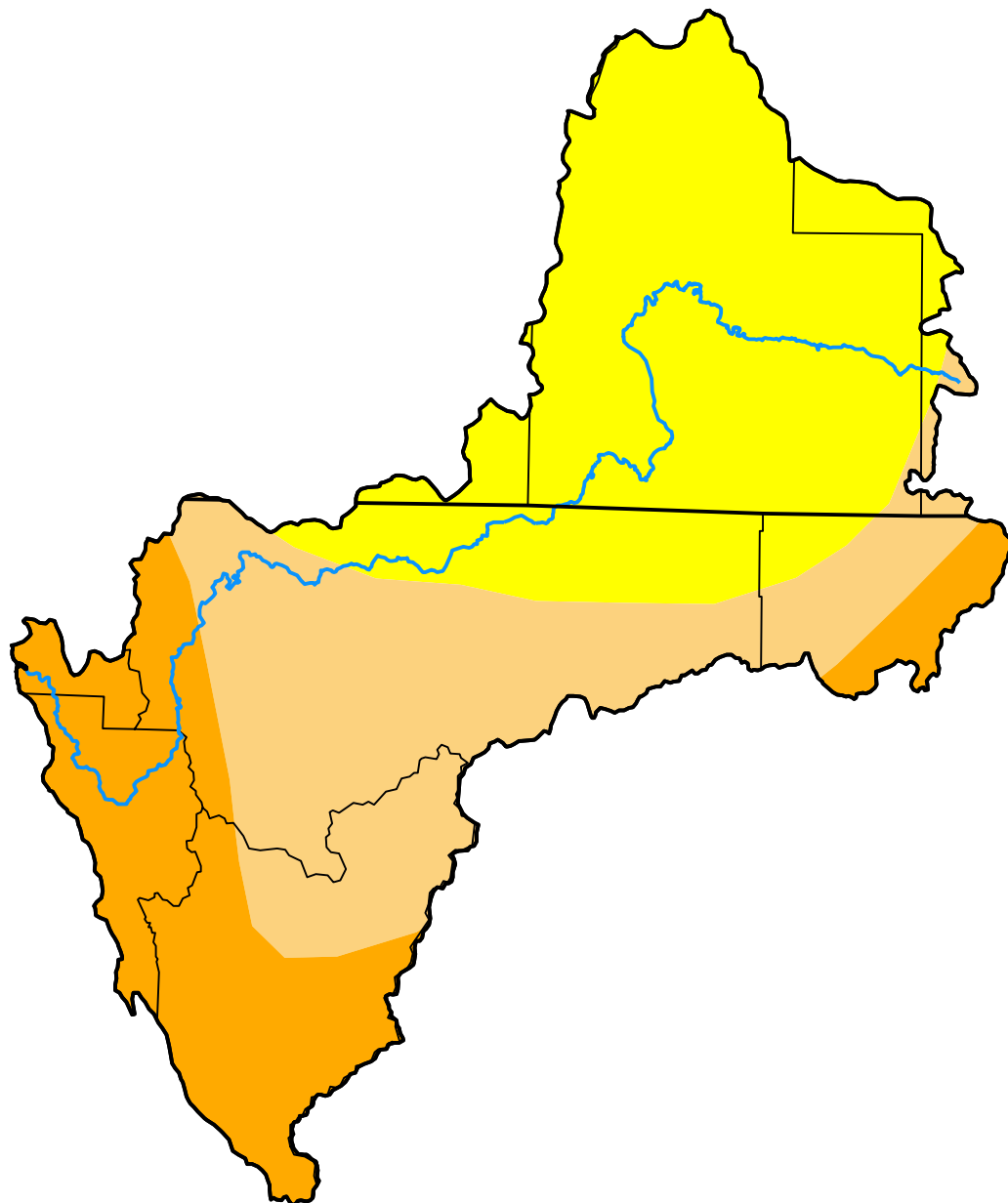
September 30, 2008

(Released Thursday, Oct. 2, 2008)

Valid 8 a.m. EDT

Drought Conditions (Percent Area)

	None	D0	D1	D2	D3	D4
<b>Current</b>	0.00	44.52	31.78	23.69	0.00	0.00
<b>Last Week</b> <i>09-23-2008</i>	0.00	44.52	31.78	23.69	0.00	0.00
<b>3 Months Ago</b> <i>07-01-2008</i>	27.00	62.94	9.64	0.42	0.00	0.00
<b>Start of Calendar Year</b> <i>01-01-2008</i>	80.55	12.56	6.89	0.00	0.00	0.00
<b>Start of Water Year</b> <i>09-30-2008</i>	0.00	44.52	31.78	23.69	0.00	0.00
<b>One Year Ago</b> <i>10-02-2007</i>	0.00	76.38	23.62	0.00	0.00	0.00



**Intensity:**

- None
- D0 Abnormally Dry
- D1 Moderate Drought
- D2 Severe Drought
- D3 Extreme Drought
- D4 Exceptional Drought

The Drought Monitor focuses on broad-scale conditions. Local conditions may vary. For more information on the Drought Monitor, go to <https://droughtmonitor.unl.edu/About.aspx>

**Author:**

Richard Heim  
NCEI/NOAA

