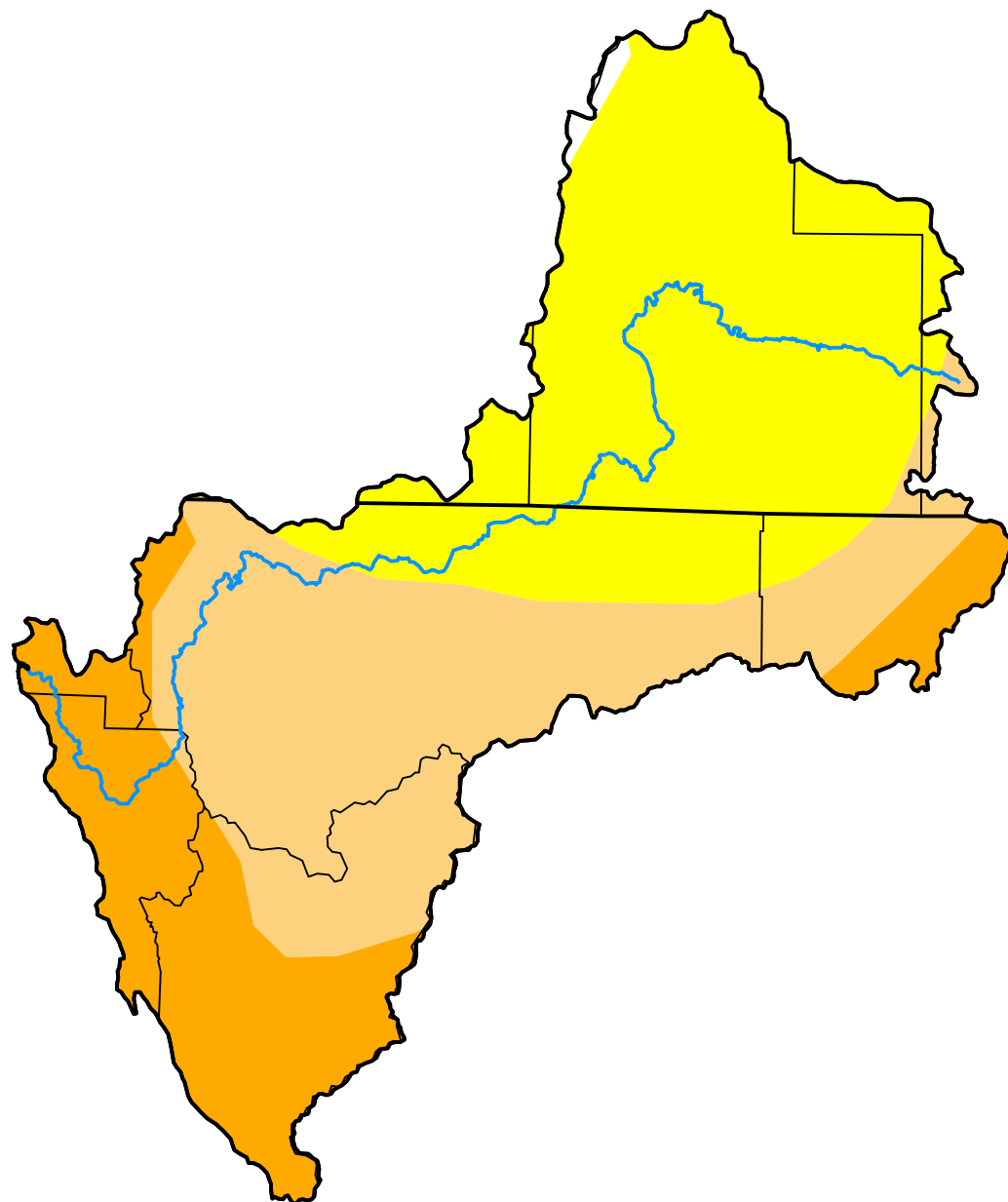


# U.S. Drought Monitor Klamath River Basin

**October 7, 2008**  
(Released Thursday, Oct. 9, 2008)  
Valid 8 a.m. EDT



*Drought Conditions (Percent Area)*

	None	D0-D4	D1-D4	D2-D4	D3-D4	D4
<b>Current</b>	0.49	99.51	55.47	21.19	0.00	0.00
<b>Last Week</b> <i>09-30-2008</i>	0.00	100.00	55.48	23.69	0.00	0.00
<b>3 Months Ago</b> <i>07-08-2008</i>	27.00	73.00	10.06	0.42	0.00	0.00
<b>Start of Calendar Year</b> <i>01-01-2008</i>	80.55	19.45	6.89	0.00	0.00	0.00
<b>Start of Water Year</b> <i>09-30-2008</i>	0.00	100.00	55.48	23.69	0.00	0.00
<b>One Year Ago</b> <i>10-09-2007</i>	0.06	99.94	23.62	0.00	0.00	0.00

**Intensity:**

None	D2 Severe Drought
D0 Abnormally Dry	D3 Extreme Drought
D1 Moderate Drought	D4 Exceptional Drought

*The Drought Monitor focuses on broad-scale conditions. Local conditions may vary. For more information on the Drought Monitor, go to <https://droughtmonitor.unl.edu/About.aspx>*

**Author:**

Laura Edwards  
Western Regional Climate Center



**droughtmonitor.unl.edu**