

# U.S. Drought Monitor

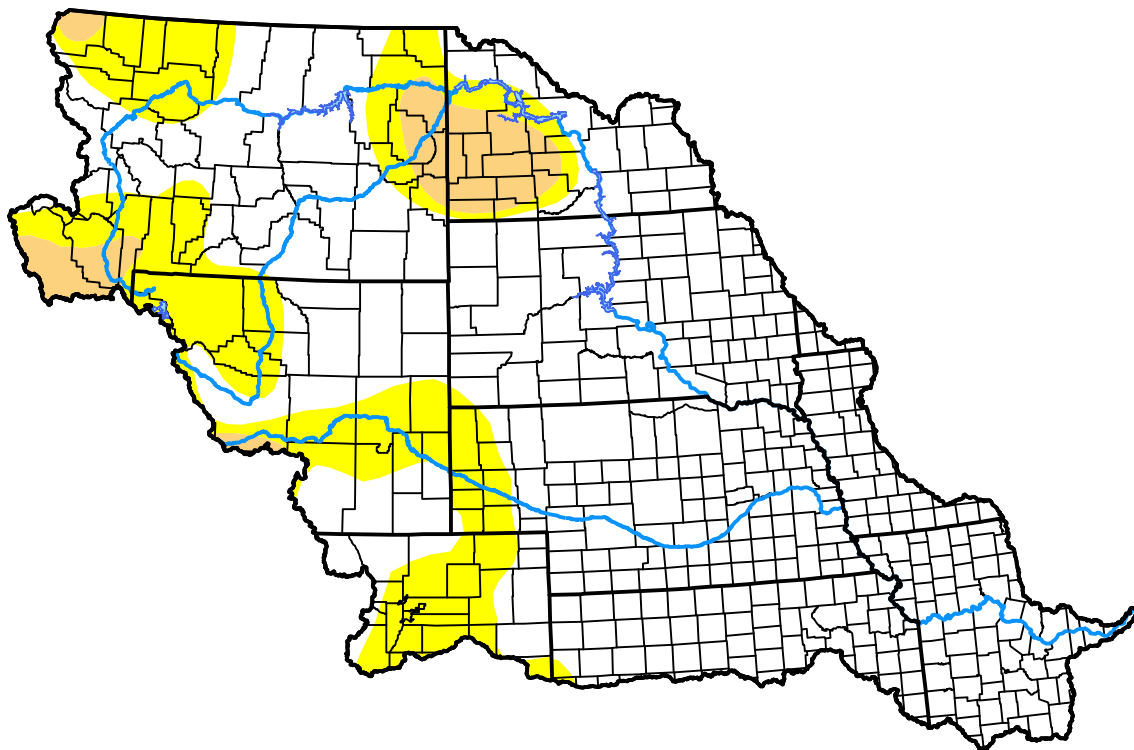
## Missouri Watershed

**November 18, 2008**  
 (Released Thursday, Nov. 20, 2008)

Valid 7 a.m. EST

*Drought Conditions (Percent Area)*

	None	D0	D1	D2	D3	D4
<b>Current</b>	75.14	19.77	5.09	0.00	0.00	0.00
<b>Last Week</b> <i>11-13-2008</i>	75.31	20.79	2.36	1.53	0.00	0.00
<b>3 Months Ago</b> <i>08-21-2008</i>	52.95	36.83	3.90	3.27	3.05	0.00
<b>Start of Calendar Year</b> <i>01-03-2008</i>	40.37	25.60	22.77	10.99	0.26	0.00
<b>Start of Water Year</b> <i>10-02-2008</i>	65.96	26.33	3.92	1.86	1.93	0.00
<b>One Year Ago</b> <i>11-21-2007</i>	46.60	21.01	23.01	9.12	0.26	0.00



***Intensity:***

- None
- D0 Abnormally Dry
- D1 Moderate Drought
- D2 Severe Drought
- D3 Extreme Drought
- D4 Exceptional Drought

*The Drought Monitor focuses on broad-scale conditions. Local conditions may vary. For more information on the Drought Monitor, go to <https://droughtmonitor.unl.edu/About.aspx>*

***Author:***

Brad Rippey  
 U.S. Department of Agriculture



**droughtmonitor.unl.edu**