

# U.S. Drought Monitor

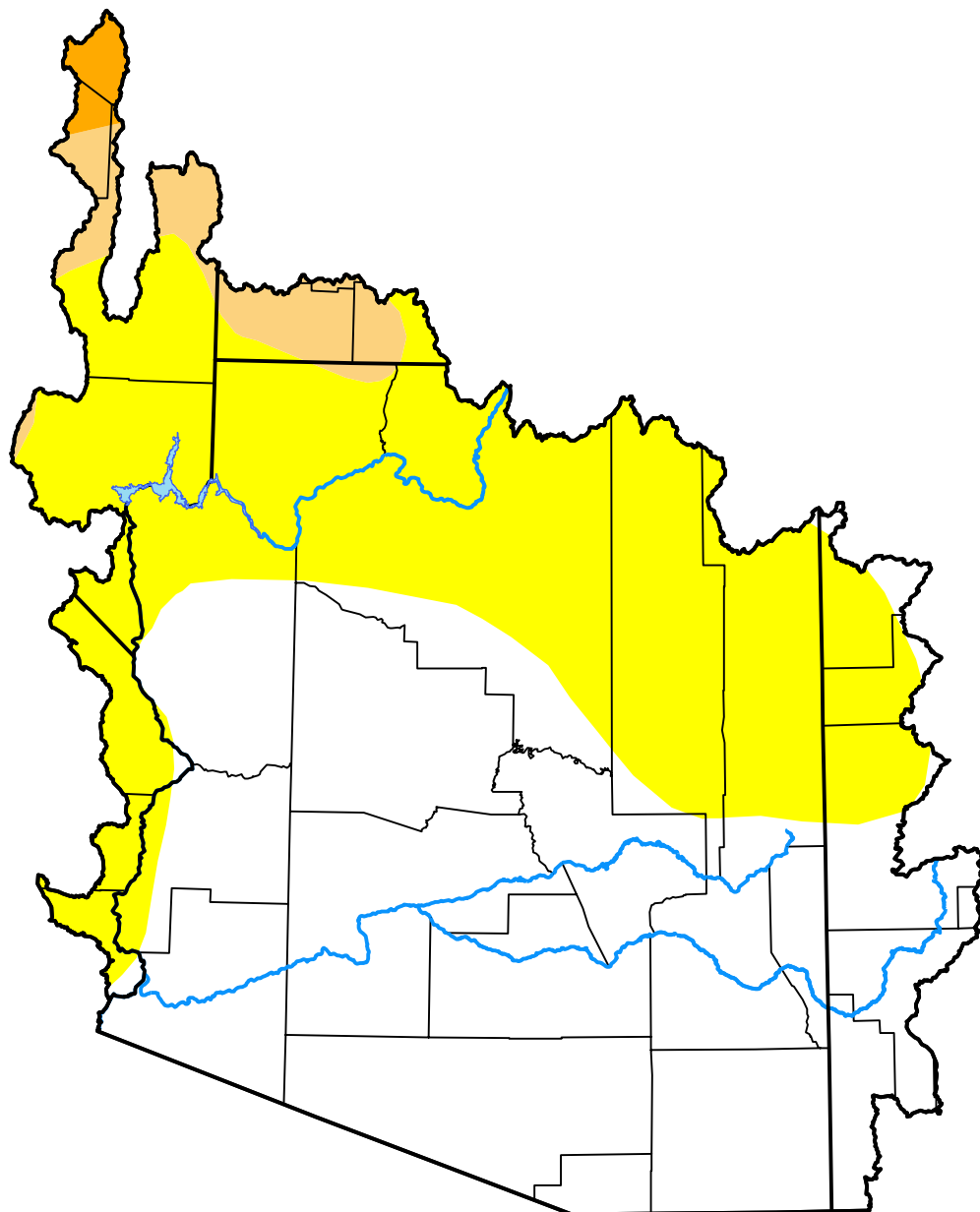
## Lower Colorado Watershed

February 10, 2009  
(Released Thursday, Feb. 12, 2009)

Valid 7 a.m. EST

Drought Conditions (Percent Area)

	None	D0-D4	D1-D4	D2-D4	D3-D4	D4
<b>Current</b>	56.45	43.55	4.54	0.77	0.00	0.00
<b>Last Week</b> <i>02-05-2009</i>	54.16	45.84	9.58	0.77	0.00	0.00
<b>3 Months Ago</b> <i>11-13-2008</i>	59.38	40.62	10.98	0.77	0.00	0.00
<b>Start of Calendar Year</b> <i>01-01-2009</i>	53.49	46.51	9.58	0.77	0.00	0.00
<b>Start of Water Year</b> <i>10-02-2008</i>	72.90	27.10	14.84	0.47	0.00	0.00
<b>One Year Ago</b> <i>02-14-2008</i>	53.12	46.88	25.73	6.40	0.00	0.00



**Intensity:**

- None
- D0 Abnormally Dry
- D1 Moderate Drought
- D2 Severe Drought
- D3 Extreme Drought
- D4 Exceptional Drought

The Drought Monitor focuses on broad-scale conditions. Local conditions may vary. For more information on the Drought Monitor, go to <https://droughtmonitor.unl.edu/About.aspx>

**Author:**

Richard Tinker  
CPC/NOAA/NWS/NCEP



[droughtmonitor.unl.edu](https://droughtmonitor.unl.edu)