

# U.S. Drought Monitor

## Pacific Northwest Watershed

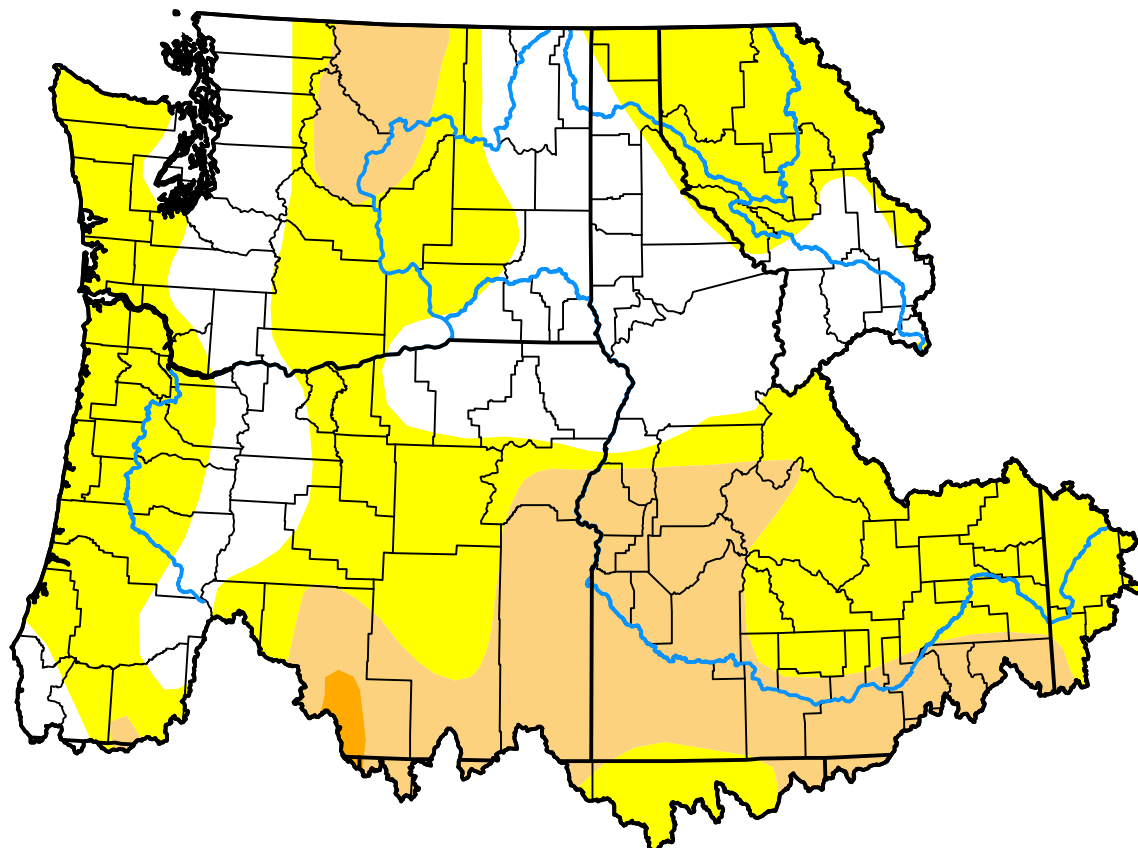
March 10, 2009

(Released Thursday, Mar. 12, 2009)

Valid 8 a.m. EDT

### Drought Conditions (Percent Area)

	None	D0-D4	D1-D4	D2-D4	D3-D4	D4
<b>Current</b>	29.60	70.40	22.58	0.43	0.00	0.00
<b>Last Week</b> <i>03-05-2009</i>	32.27	67.73	29.75	1.77	0.00	0.00
<b>3 Months Ago</b> <i>12-11-2008</i>	46.16	53.84	23.99	1.77	0.00	0.00
<b>Start of Calendar Year</b> <i>01-01-2009</i>	34.86	65.14	23.19	1.77	0.00	0.00
<b>Start of Water Year</b> <i>10-02-2008</i>	37.11	62.89	17.50	1.62	0.00	0.00
<b>One Year Ago</b> <i>03-13-2008</i>	57.65	42.35	27.14	17.42	0.00	0.00



### Intensity:

None	D2 Severe Drought
D0 Abnormally Dry	D3 Extreme Drought
D1 Moderate Drought	D4 Exceptional Drought

The Drought Monitor focuses on broad-scale conditions. Local conditions may vary. For more information on the Drought Monitor, go to <https://droughtmonitor.unl.edu/About.aspx>

### Author:

Michael Brewer  
NCEI/NOAA



[droughtmonitor.unl.edu](https://droughtmonitor.unl.edu)