

U.S. Drought Monitor

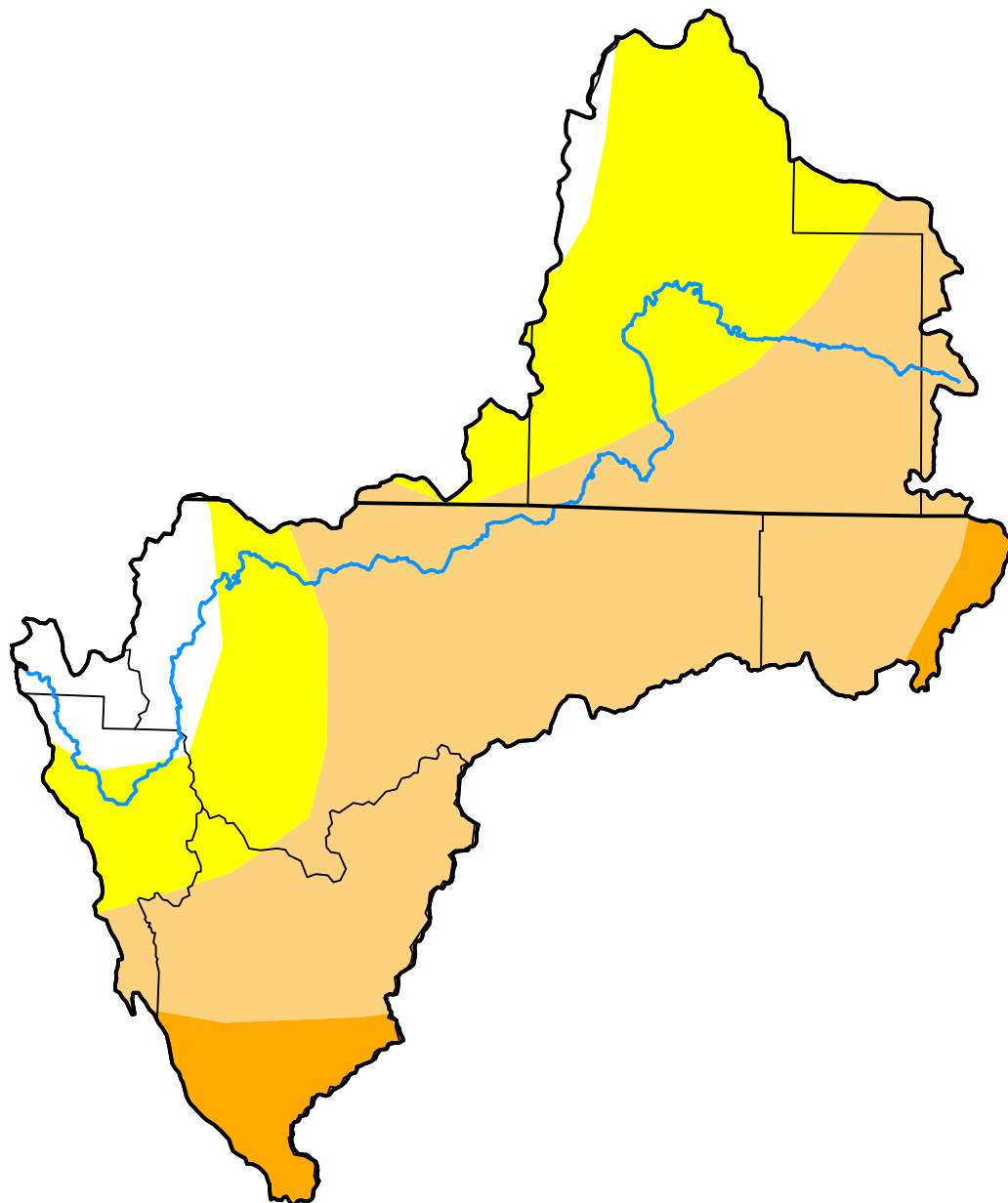
Klamath River Basin

April 28, 2009
(Released Thursday, Apr. 30, 2009)

Valid 8 a.m. EDT

Drought Conditions (Percent Area)

	None	D0	D1	D2	D3	D4
Current	7.64	31.81	54.26	6.29	0.00	0.00
Last Week <i>04-21-2009</i>	7.64	31.81	54.26	6.29	0.00	0.00
3 Months Ago <i>01-27-2009</i>	12.69	24.28	50.95	11.37	0.72	0.00
Start of Calendar Year <i>12-30-2008</i>	8.39	28.58	55.63	7.41	0.00	0.00
Start of Water Year <i>09-30-2008</i>	0.00	44.52	31.78	23.69	0.00	0.00
One Year Ago <i>04-29-2008</i>	79.80	15.77	4.01	0.42	0.00	0.00



Intensity:

- None
- D0 Abnormally Dry
- D1 Moderate Drought
- D2 Severe Drought
- D3 Extreme Drought
- D4 Exceptional Drought

The Drought Monitor focuses on broad-scale conditions. Local conditions may vary. For more information on the Drought Monitor, go to <https://droughtmonitor.unl.edu/About.aspx>

Author:

Brad Rippey
 U.S. Department of Agriculture



droughtmonitor.unl.edu