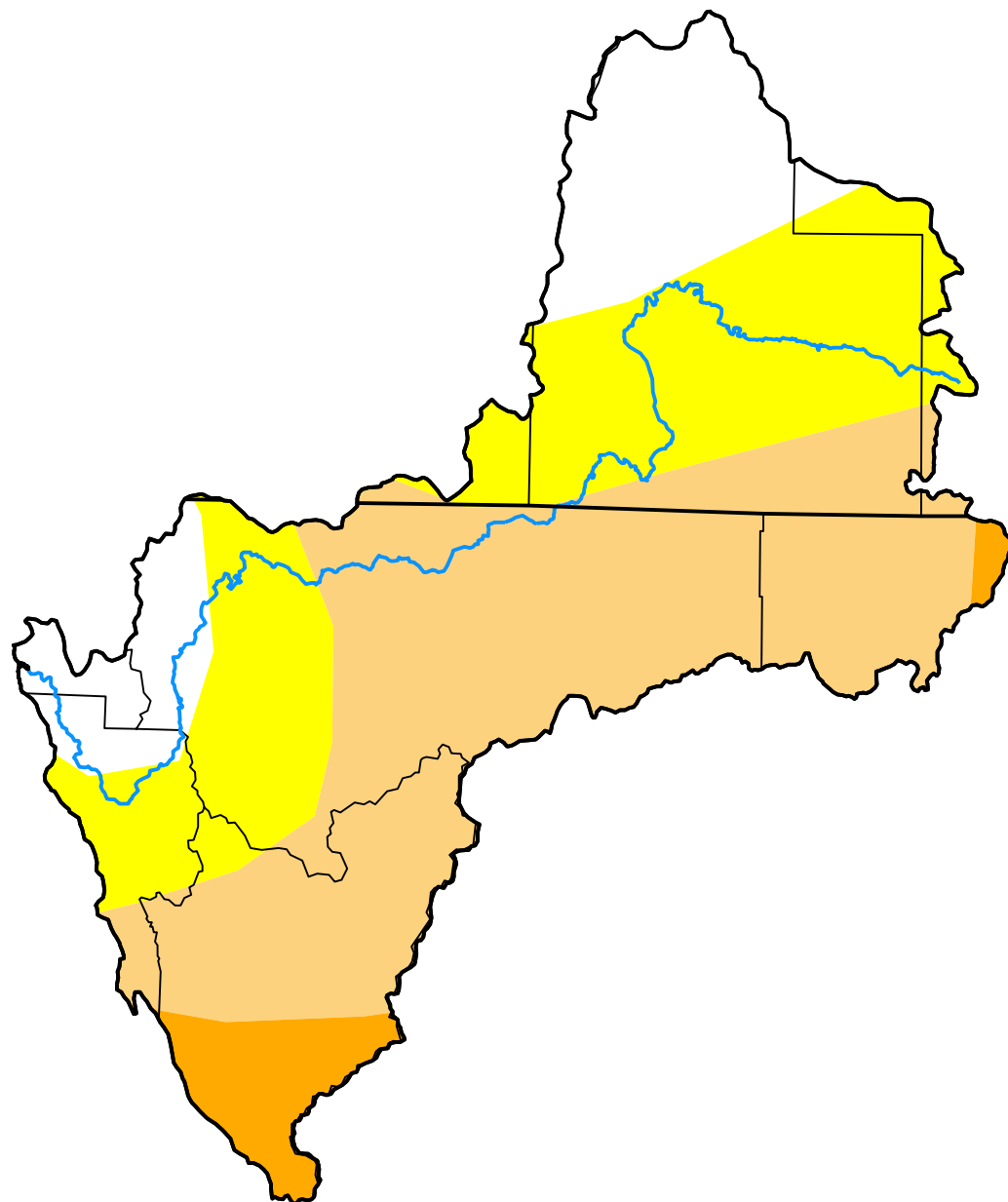


U.S. Drought Monitor Klamath River Basin

June 23, 2009
(Released Thursday, Jun. 25, 2009)
Valid 8 a.m. EDT



Drought Conditions (Percent Area)

	None	D0-D4	D1-D4	D2-D4	D3-D4	D4
Current	17.30	82.70	50.77	5.47	0.00	0.00
Last Week <i>06-16-2009</i>	10.82	89.18	59.13	5.47	0.00	0.00
3 Months Ago <i>03-24-2009</i>	7.64	92.36	58.44	3.16	0.00	0.00
Start of Calendar Year <i>12-30-2008</i>	8.39	91.61	63.03	7.41	0.00	0.00
Start of Water Year <i>09-30-2008</i>	0.00	100.00	55.48	23.69	0.00	0.00
One Year Ago <i>06-24-2008</i>	27.00	73.00	10.06	0.42	0.00	0.00

Intensity:



The Drought Monitor focuses on broad-scale conditions. Local conditions may vary. For more information on the Drought Monitor, go to <https://droughtmonitor.unl.edu/About.aspx>

Author:

Michael Brewer
NCEI/NOAA



droughtmonitor.unl.edu