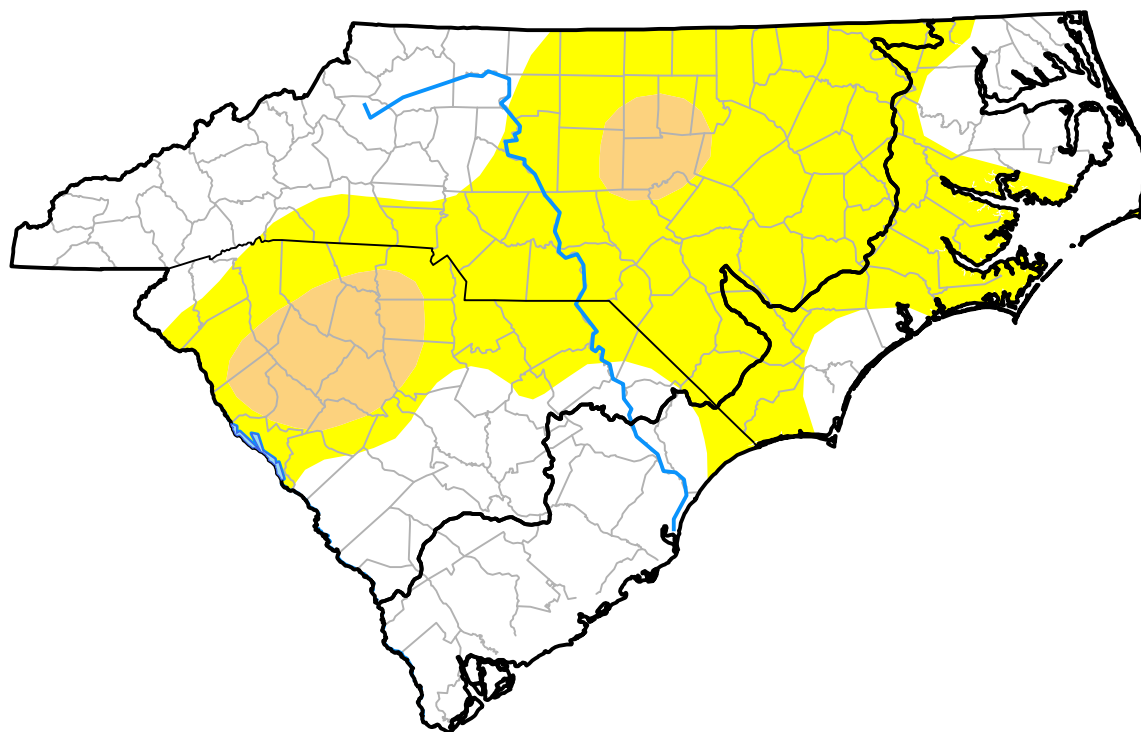


U.S. Drought Monitor

Coastal Carolinas RDEWS

August 25, 2009
 (Released Thursday, Aug. 27, 2009)
 Valid 8 a.m. EDT



Drought Conditions (Percent Area)

	None	D0	D1	D2	D3	D4
Current	71.24	28.76	0.00	0.00	0.00	0.00
Last Week <i>08-20-2009</i>	71.24	28.76	0.00	0.00	0.00	0.00
3 Months Ago <i>05-28-2009</i>	83.34	16.66	0.00	0.00	0.00	0.00
Start of Calendar Year <i>01-01-2009</i>	100.00	0.00	0.00	0.00	0.00	0.00
Start of Water Year <i>10-02-2008</i>	37.75	26.82	28.48	6.95	0.00	0.00
One Year Ago <i>08-28-2008</i>	22.05	27.57	35.24	15.15	0.00	0.00

Intensity:

None	D2 Severe Drought
D0 Abnormally Dry	D3 Extreme Drought
D1 Moderate Drought	D4 Exceptional Drought

The Drought Monitor focuses on broad-scale conditions. Local conditions may vary. For more information on the Drought Monitor, go to <https://droughtmonitor.unl.edu/About.aspx>

Author:

Brad Rippey
 U.S. Department of Agriculture



droughtmonitor.unl.edu