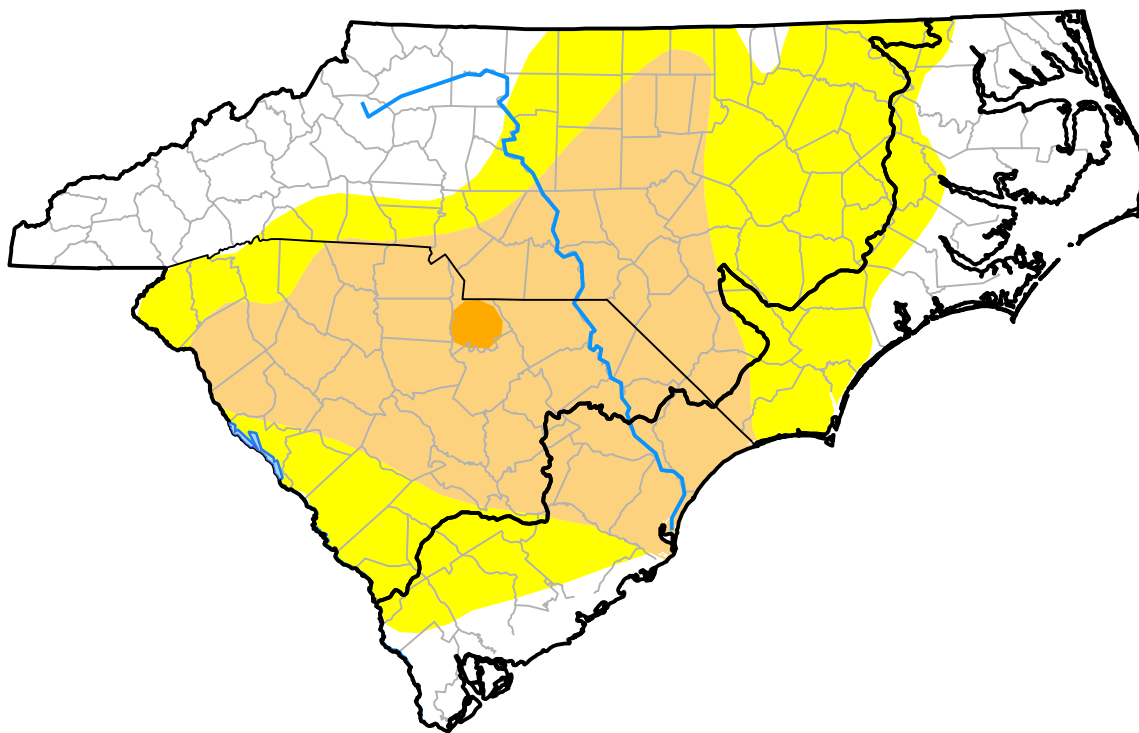


U.S. Drought Monitor

Coastal Carolinas RDEWS

September 15, 2009
 (Released Thursday, Sep. 17, 2009)
 Valid 8 a.m. EDT



Drought Conditions (Percent Area)

| | None | D0 | D1 | D2 | D3 | D4 |
|--|--------|-------|-------|-------|------|------|
| Current | 58.74 | 28.41 | 12.85 | 0.00 | 0.00 | 0.00 |
| Last Week <i>09-10-2009</i> | 65.51 | 34.49 | 0.00 | 0.00 | 0.00 | 0.00 |
| 3 Months Ago <i>06-18-2009</i> | 83.01 | 16.99 | 0.00 | 0.00 | 0.00 | 0.00 |
| Start of Calendar Year <i>01-01-2009</i> | 100.00 | 0.00 | 0.00 | 0.00 | 0.00 | 0.00 |
| Start of Water Year <i>10-02-2008</i> | 37.75 | 26.82 | 28.48 | 6.95 | 0.00 | 0.00 |
| One Year Ago <i>09-18-2008</i> | 28.35 | 25.15 | 31.85 | 14.65 | 0.00 | 0.00 |

Intensity:

- None
- D0 Abnormally Dry
- D1 Moderate Drought
- D2 Severe Drought
- D3 Extreme Drought
- D4 Exceptional Drought

The Drought Monitor focuses on broad-scale conditions. Local conditions may vary. For more information on the Drought Monitor, go to <https://droughtmonitor.unl.edu/About.aspx>

Author:

Anthony Artusa
 NOAA/NWS/NCEP/CPC

