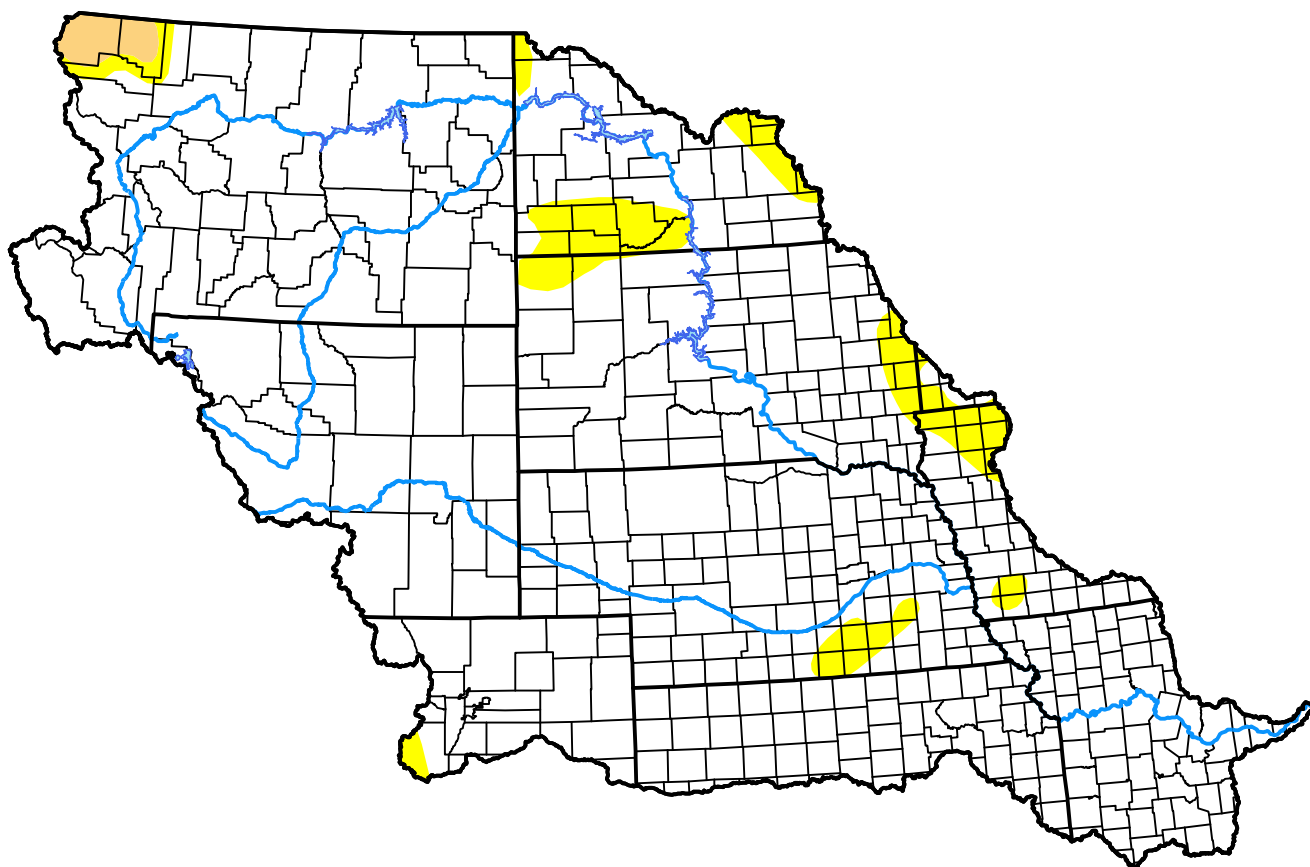


# U.S. Drought Monitor Missouri Watershed

**September 22, 2009**  
(Released Thursday, Sep. 24, 2009)  
Valid 8 a.m. EDT



## Intensity:

-  None
-  D0 Abnormally Dry
-  D1 Moderate Drought
-  D2 Severe Drought
-  D3 Extreme Drought
-  D4 Exceptional Drought

*The Drought Monitor focuses on broad-scale conditions. Local conditions may vary. For more information on the Drought Monitor, go to <https://droughtmonitor.unl.edu/About.aspx>*

## Author:

David Miskus  
NOAA/NWS/NCEP/CPC



**droughtmonitor.unl.edu**