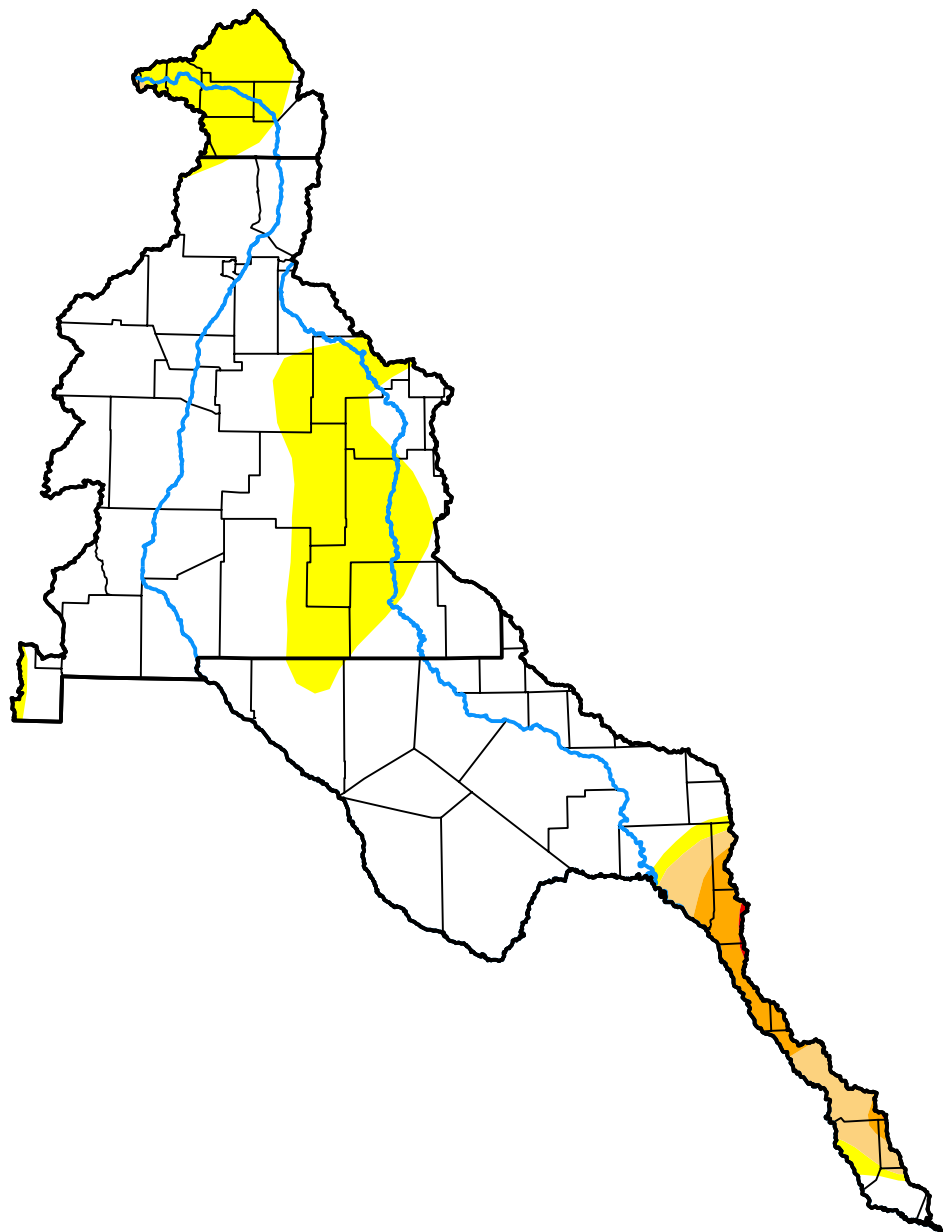


U.S. Drought Monitor

Rio Grande Watershed

October 6, 2009
 (Released Thursday, Oct. 8, 2009)
 Valid 8 a.m. EDT



Drought Conditions (Percent Area)

| | None | D0-D4 | D1-D4 | D2-D4 | D3-D4 | D4 |
|--|-------|-------|-------|-------|-------|------|
| Current | 76.69 | 23.31 | 4.83 | 2.14 | 0.09 | 0.00 |
| Last Week <i>10-01-2009</i> | 76.80 | 23.20 | 4.83 | 2.46 | 0.22 | 0.00 |
| 3 Months Ago <i>07-09-2009</i> | 65.84 | 34.16 | 21.53 | 6.48 | 1.22 | 0.23 |
| Start of Calendar Year <i>01-01-2009</i> | 71.45 | 28.55 | 4.74 | 1.37 | 0.00 | 0.00 |
| Start of Water Year <i>10-01-2009</i> | 76.80 | 23.20 | 4.83 | 2.46 | 0.22 | 0.00 |
| One Year Ago <i>10-09-2008</i> | 77.02 | 22.98 | 2.85 | 0.66 | 0.00 | 0.00 |

Intensity:

| | |
|---------------------|------------------------|
| None | D2 Severe Drought |
| D0 Abnormally Dry | D3 Extreme Drought |
| D1 Moderate Drought | D4 Exceptional Drought |

The Drought Monitor focuses on broad-scale conditions. Local conditions may vary. For more information on the Drought Monitor, go to <https://droughtmonitor.unl.edu/About.aspx>

Author:

Anthony Artusa
 NOAA/NWS/NCEP/CPC



droughtmonitor.unl.edu