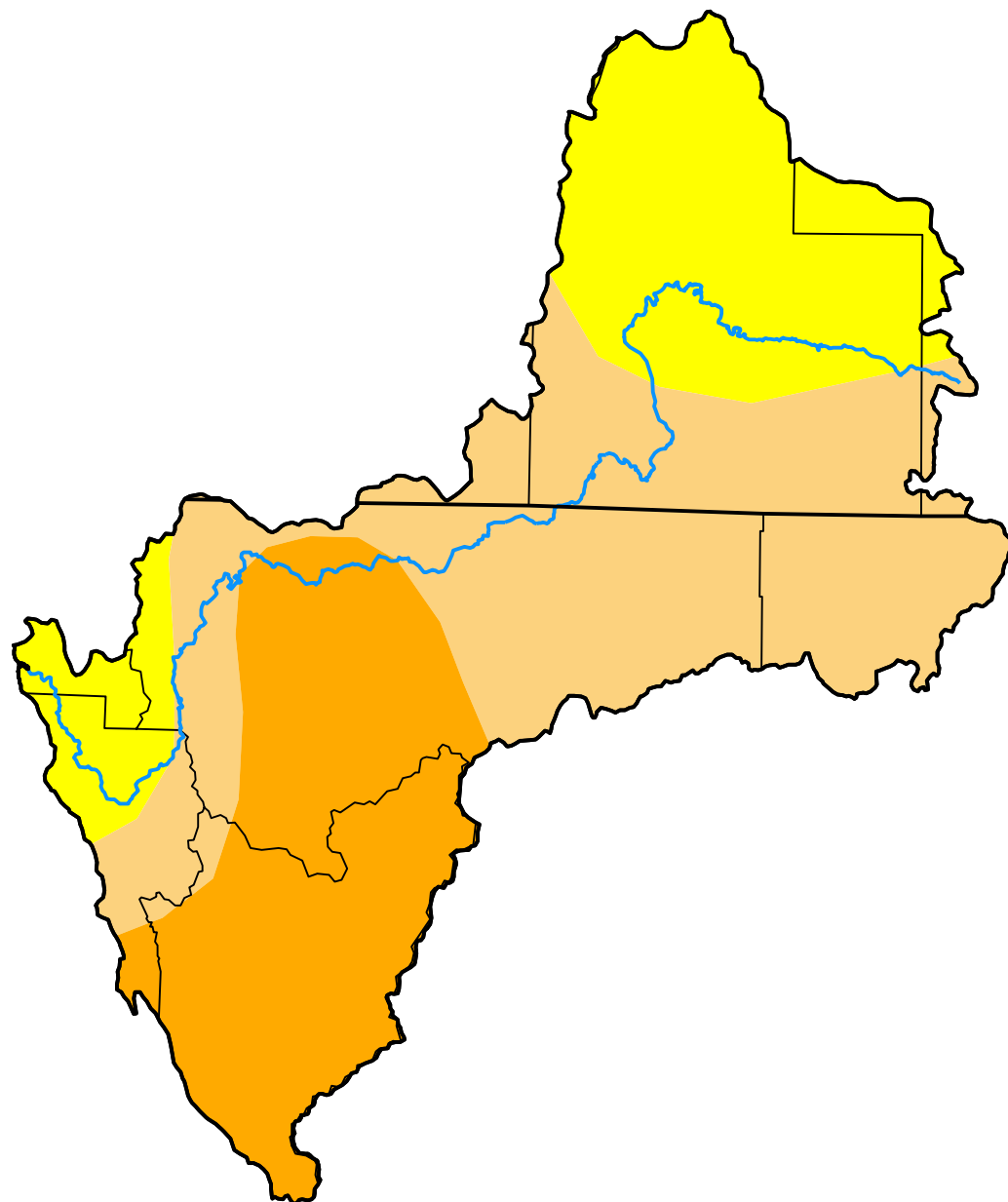


U.S. Drought Monitor Klamath River Basin

October 6, 2009
(Released Thursday, Oct. 8, 2009)
Valid 8 a.m. EDT



Drought Conditions (Percent Area)

	None	D0-D4	D1-D4	D2-D4	D3-D4	D4
Current	0.00	100.00	72.34	28.71	0.00	0.00
Last Week 09-29-2009	0.00	100.00	72.34	28.71	0.00	0.00
3 Months Ago 07-07-2009	8.71	91.29	59.13	5.47	0.00	0.00
Start of Calendar Year 12-30-2008	8.39	91.61	63.03	7.41	0.00	0.00
Start of Water Year 09-29-2009	0.00	100.00	72.34	28.71	0.00	0.00
One Year Ago 10-07-2008	0.49	99.51	55.47	21.19	0.00	0.00

Intensity:

None	D2 Severe Drought
D0 Abnormally Dry	D3 Extreme Drought
D1 Moderate Drought	D4 Exceptional Drought

The Drought Monitor focuses on broad-scale conditions. Local conditions may vary. For more information on the Drought Monitor, go to <https://droughtmonitor.unl.edu/About.aspx>

Author:

Anthony Artusa
NOAA/NWS/NCEP/CPC



droughtmonitor.unl.edu