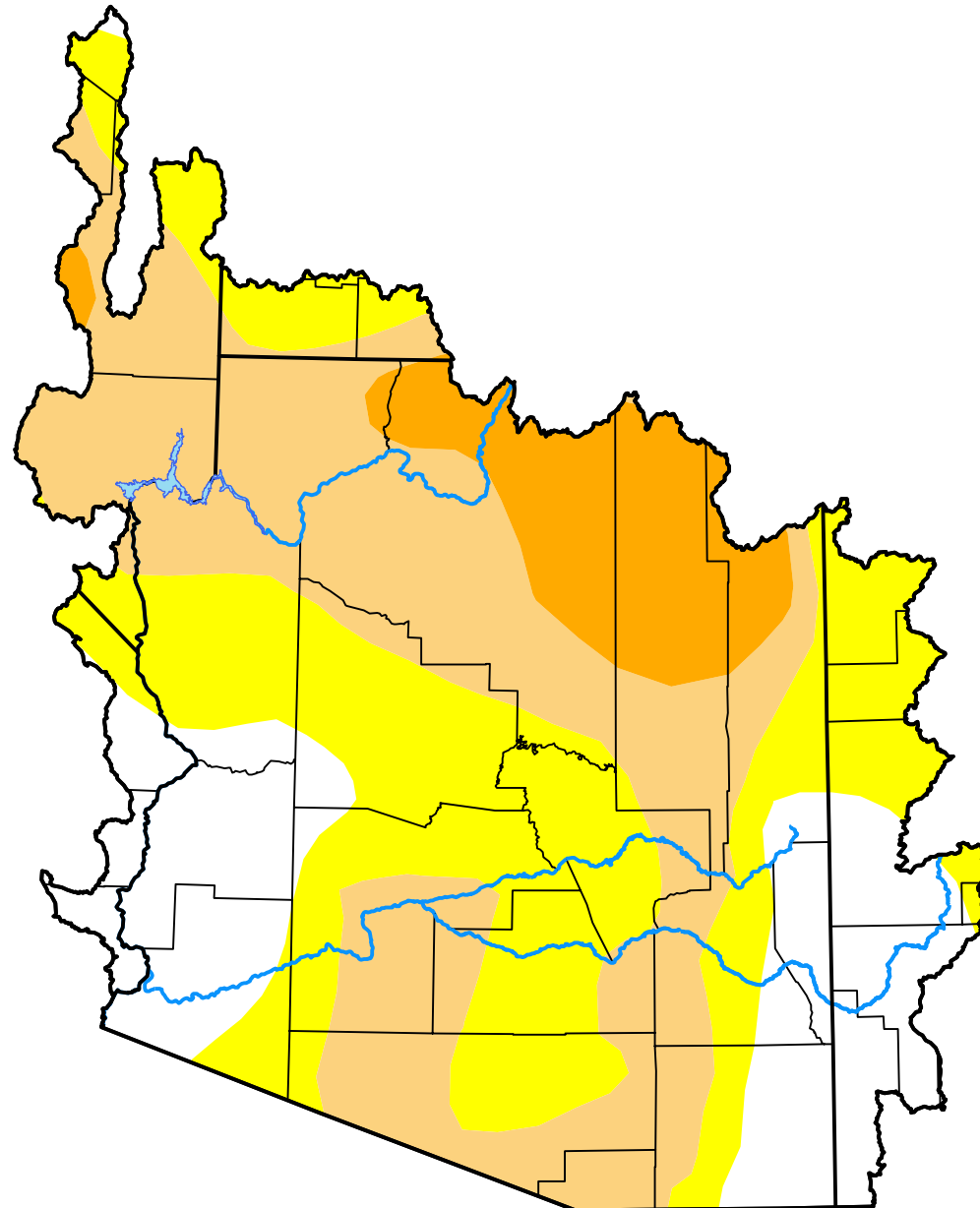


U.S. Drought Monitor

Lower Colorado Watershed

February 16, 2010
 (Released Thursday, Feb. 18, 2010)
 Valid 7 a.m. EST



Drought Conditions (Percent Area)

	None	D0	D1	D2	D3	D4
Current	19.99	33.69	36.06	10.26	0.00	0.00
Last Week <i>02-11-2010</i>	19.50	34.18	36.06	10.26	0.00	0.00
3 Months Ago <i>11-19-2009</i>	1.05	19.78	31.71	47.45	0.00	0.00
Start of Calendar Year <i>12-31-2009</i>	0.33	9.55	36.74	49.68	3.71	0.00
Start of Water Year <i>10-01-2009</i>	11.74	48.82	39.44	0.00	0.00	0.00
One Year Ago <i>02-19-2009</i>	73.46	24.28	1.49	0.77	0.00	0.00

Intensity:

- None
- D0 Abnormally Dry
- D1 Moderate Drought
- D2 Severe Drought
- D3 Extreme Drought
- D4 Exceptional Drought

The Drought Monitor focuses on broad-scale conditions. Local conditions may vary. For more information on the Drought Monitor, go to <https://droughtmonitor.unl.edu/About.aspx>

Author:

Brian Fuchs
 National Drought Mitigation Center

