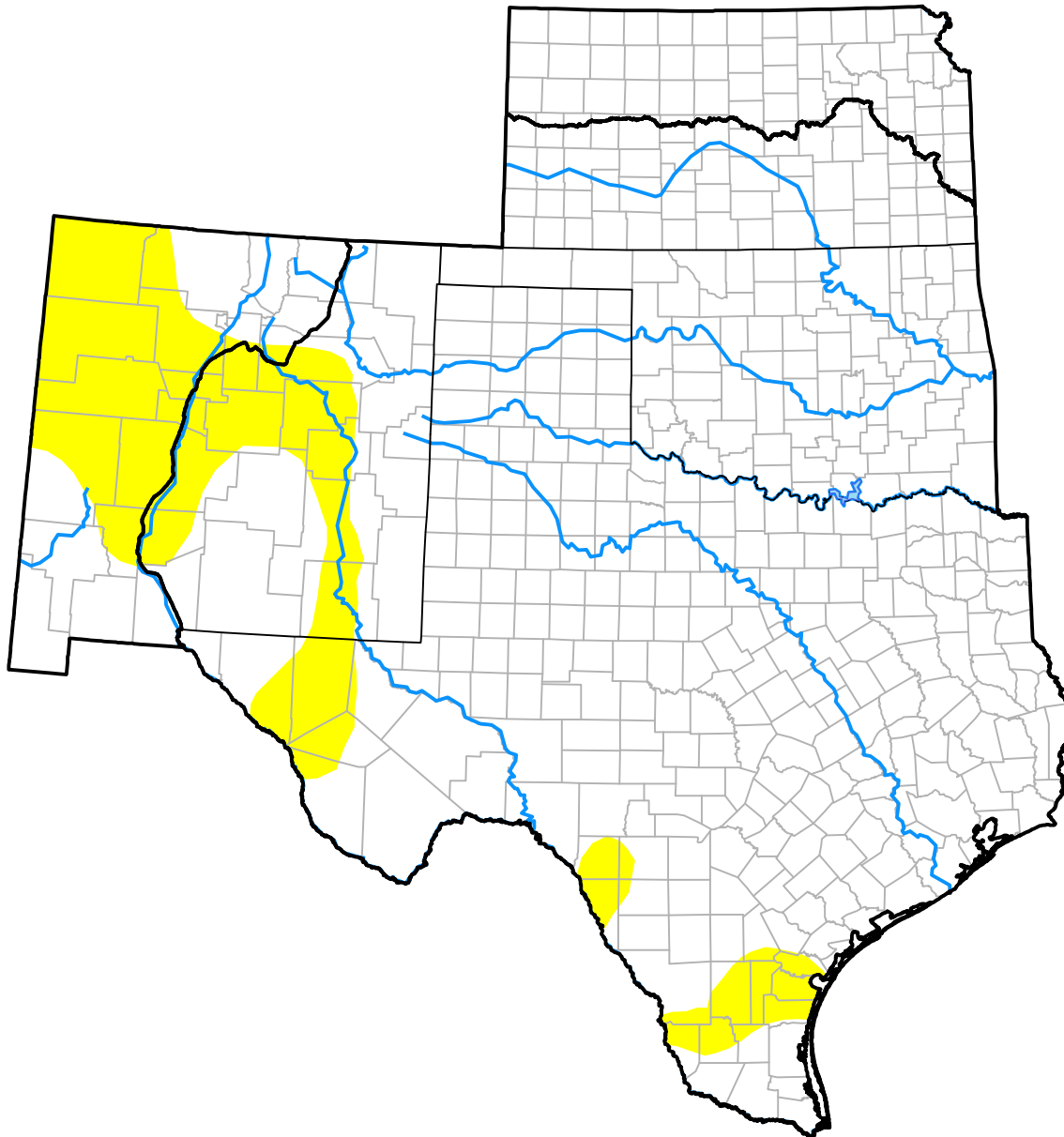


U.S. Drought Monitor

Southern Plains RDEWS

February 16, 2010
 (Released Thursday, Feb. 18, 2010)
 Valid 7 a.m. EST



Drought Conditions (Percent Area)

	None	D0	D1	D2	D3	D4
Current	84.83	15.17	0.00	0.00	0.00	0.00
Last Week <i>02-11-2010</i>	84.43	15.32	0.25	0.00	0.00	0.00
3 Months Ago <i>11-19-2009</i>	76.13	13.48	4.71	3.16	2.01	0.52
Start of Calendar Year <i>12-31-2009</i>	72.79	20.46	4.80	1.95	0.00	0.00
Start of Water Year <i>10-01-2009</i>	71.51	11.55	4.20	5.60	5.33	1.82
One Year Ago <i>02-19-2009</i>	21.74	36.26	15.13	15.29	6.61	4.97

Intensity:

- None
- D0 Abnormally Dry
- D1 Moderate Drought
- D2 Severe Drought
- D3 Extreme Drought
- D4 Exceptional Drought

The Drought Monitor focuses on broad-scale conditions. Local conditions may vary. For more information on the Drought Monitor, go to <https://droughtmonitor.unl.edu/About.aspx>

Author:

Brian Fuchs
 National Drought Mitigation Center

