

U.S. Drought Monitor

Wind River and Surrounding Area

March 30, 2010

(Released Thursday, Apr. 1, 2010)

Valid 8 a.m. EDT

Drought Conditions (Percent Area)

	None	D0	D1	D2	D3	D4
Current	0.00	0.00	0.00	0.00	0.00	0.00
Last Week 03-25-2010	0.00	0.00	0.00	0.00	0.00	0.00
3 Months Ago 12-31-2009	0.00	0.00	0.00	0.00	0.00	0.00
Start of Calendar Year 12-31-2009	0.00	0.00	0.00	0.00	0.00	0.00
Start of Water Year 10-01-2009	0.00	0.00	0.00	0.00	0.00	0.00
One Year Ago 04-02-2009	0.00	0.00	0.00	0.00	0.00	0.00

Note: Statistics are for the surrounding area including the reservation.

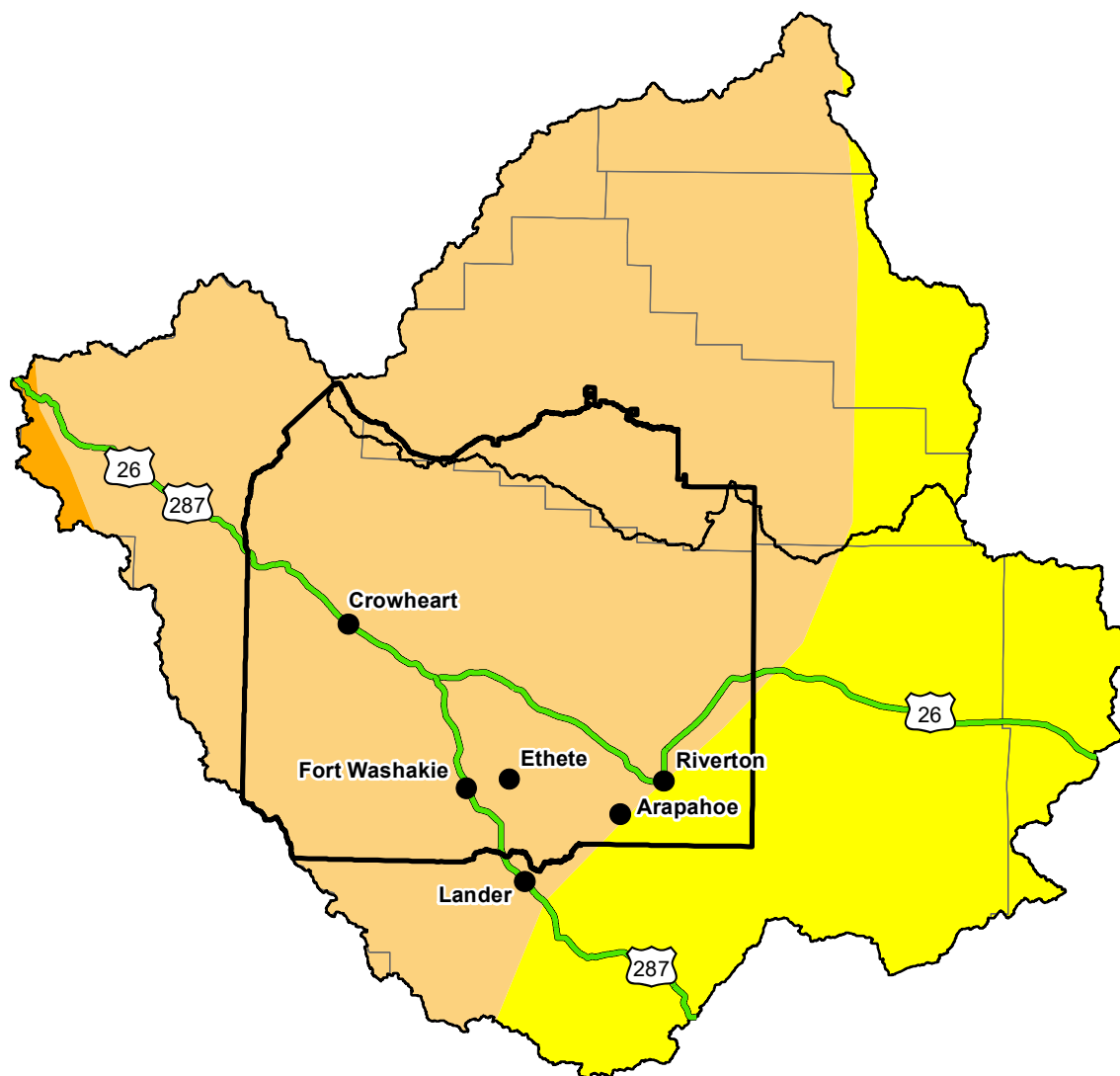
Intensity:

 None	 D2 Severe Drought
 D0 Abnormally Dry	 D3 Extreme Drought
 D1 Moderate Drought	 D4 Exceptional Drought

The Drought Monitor focuses on broad-scale conditions. Local conditions may vary. For more information on the Drought Monitor, go to <https://droughtmonitor.unl.edu/About.aspx>

Author:

Matthew Rosencrans
CPC/NCEP/NWS/NOAA



<http://droughtmonitor.unl.edu/>