

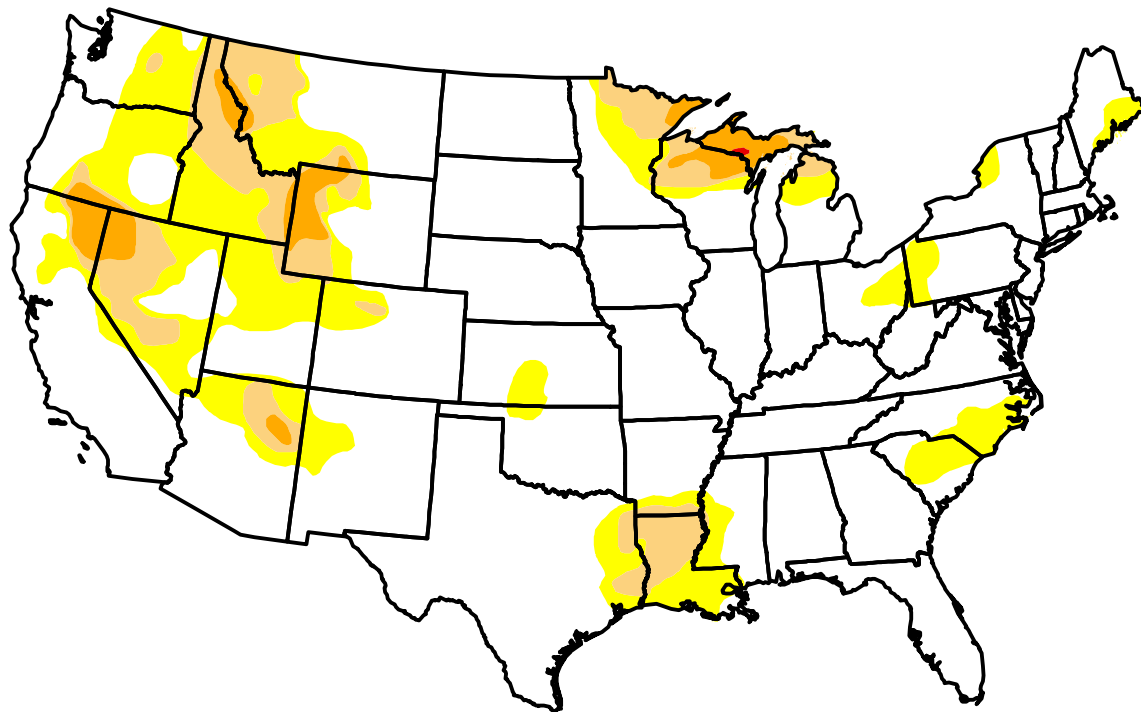
# U.S. Drought Monitor

## Total U.S.

**May 18, 2010**  
 (Released Thursday, May. 20, 2010)  
 Valid 7 a.m. EST

### Drought Conditions (Percent Area)

	None	D0-D4	D1-D4	D2-D4	D3-D4	D4
<b>Current</b>	71.91	28.09	8.72	2.36	0.07	0.01
<b>Last Week</b> <i>5/11/2010</i>	67.81	32.19	9.56	2.26	0.05	0.01
<b>3 Months Ago</b> <i>2/16/2010</i>	69.78	30.22	7.50	1.31	0.02	0.00
<b>Start of Calendar Year</b> <i>12/29/2009</i>	71.94	28.06	10.46	3.59	0.17	0.00
<b>Start of Water Year</b> <i>9/29/2009</i>	68.41	31.59	12.61	5.22	1.09	0.23
<b>One Year Ago</b> <i>5/19/2009</i>	69.89	30.11	14.37	6.06	1.59	0.63

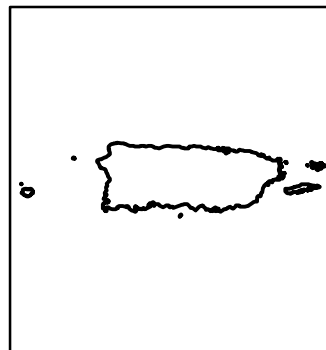
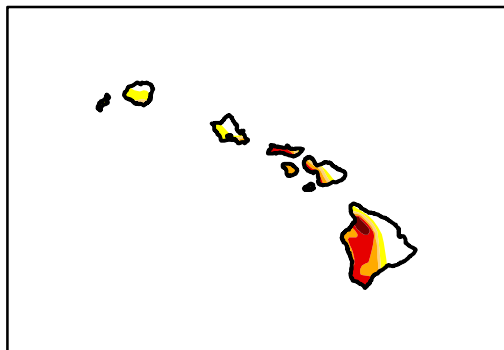
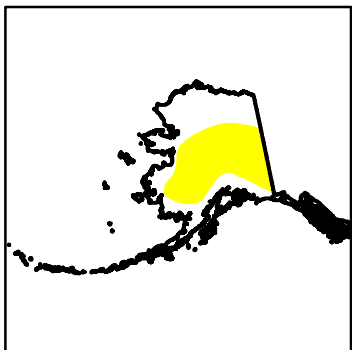


### Intensity:



The Drought Monitor focuses on broad-scale conditions. Local conditions may vary. See accompanying text summary for forecast statements.

**Author:**  
 Michael Brewer  
 NCDC/NOAA



<http://droughtmonitor.unl.edu/>