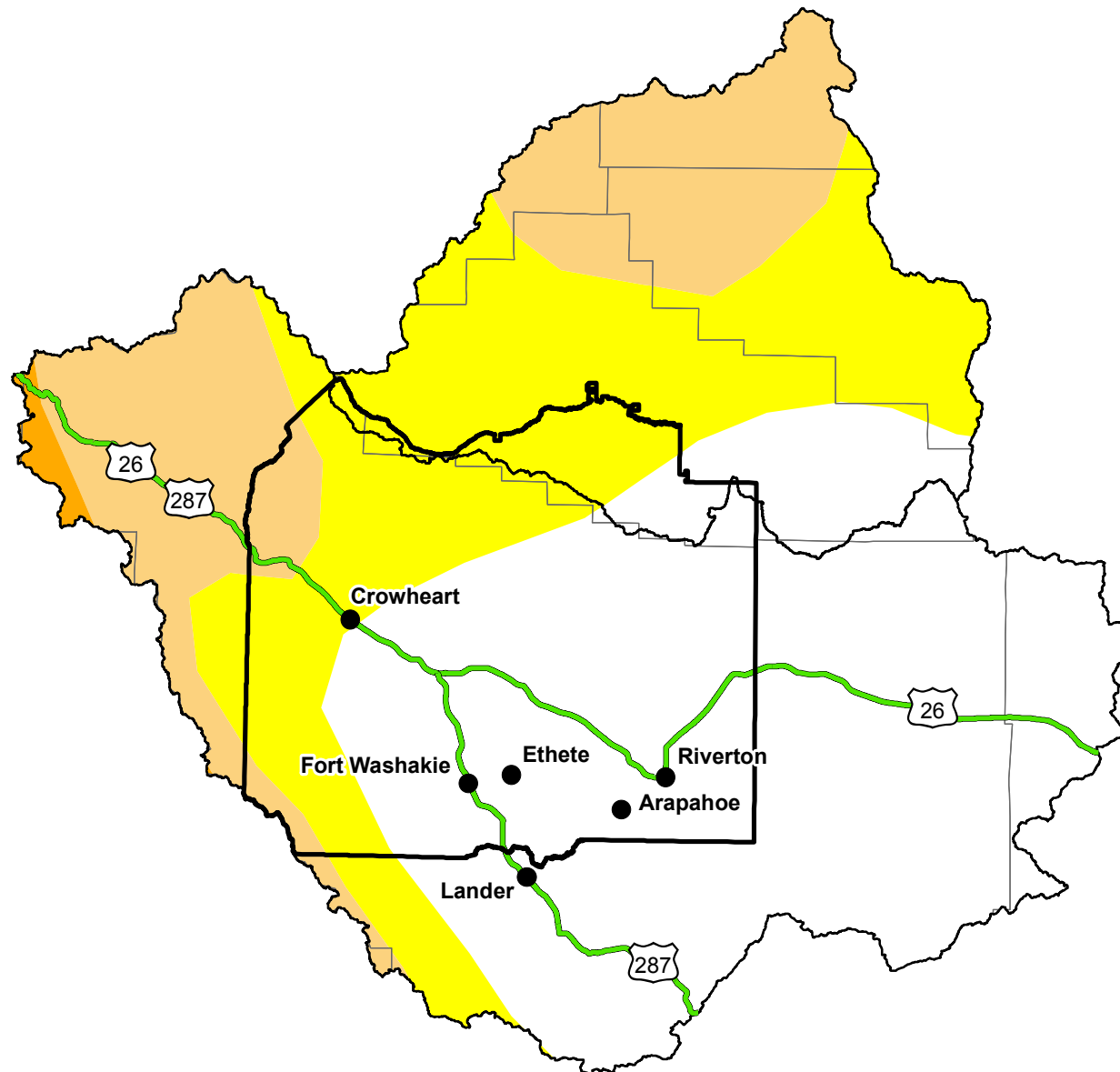







# U.S. Drought Monitor

## Wind River and Surrounding Area

May 18, 2010  
(Released Thursday, May. 20, 2010)  
Valid 8 a.m. EDT



### Intensity:

-  D0 Abnormally Dry
-  D1 Moderate Drought
-  D2 Severe Drought
-  D3 Extreme Drought
-  D4 Exceptional Drought

*The Drought Monitor focuses on broad-scale conditions. Local conditions may vary. See accompanying text summary for forecast statements.*

**Author:**  
Michael Brewer  
NCEI/NOAA



<http://droughtmonitor.unl.edu/>