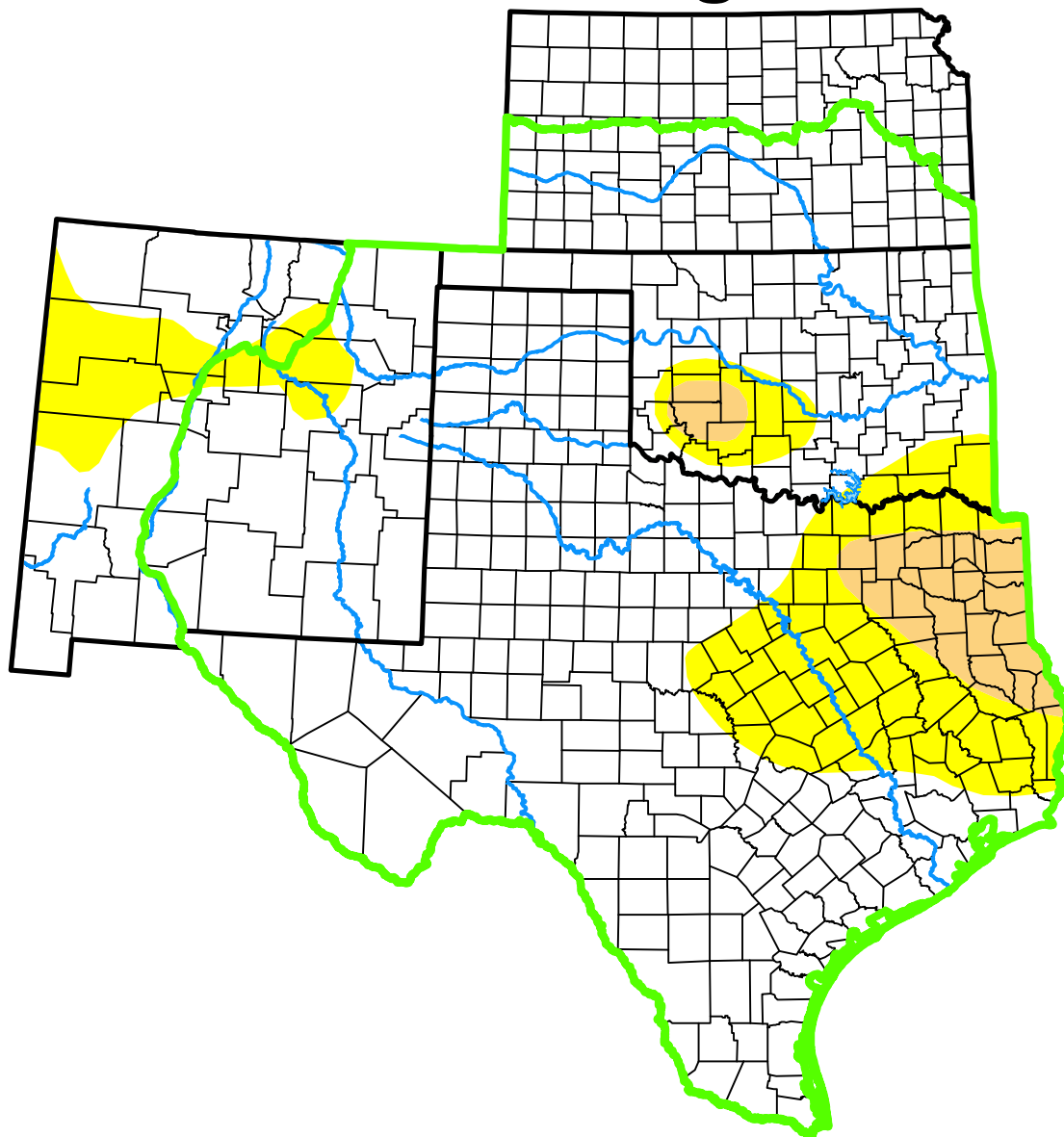


U.S. Drought Monitor

Southern Plains DEWS and Surrounding Areas



June 8, 2010

(Released Thursday, Jun. 10, 2010)

Valid 8 a.m. EDT

Drought Conditions (Percent Area)

	None	D0	D1	D2	D3	D4
Current	81.25	13.82	4.93	0.00	0.00	0.00
Last Week <i>06-01-2010</i>	81.31	12.94	5.75	0.00	0.00	0.00
3 Months Ago <i>03-09-2010</i>	96.61	3.39	0.00	0.00	0.00	0.00
Start of Calendar Year <i>12-29-2009</i>	77.84	17.96	2.81	1.39	0.00	0.00
Start of Water Year <i>09-29-2009</i>	72.67	10.57	3.53	5.81	5.53	1.89
One Year Ago <i>06-09-2009</i>	34.62	26.67	18.55	9.63	5.92	4.61

(Statistics for area highlighted in green)

Intensity:

None	D2 Severe Drought
D0 Abnormally Dry	D3 Extreme Drought
D1 Moderate Drought	D4 Exceptional Drought

The Drought Monitor focuses on broad-scale conditions. Local conditions may vary. For more information on the Drought Monitor, go to <https://droughtmonitor.unl.edu/About.aspx>

Author:

Brian Fuchs
National Drought Mitigation Center



droughtmonitor.unl.edu