

U.S. Drought Monitor

Pacific Northwest Watershed

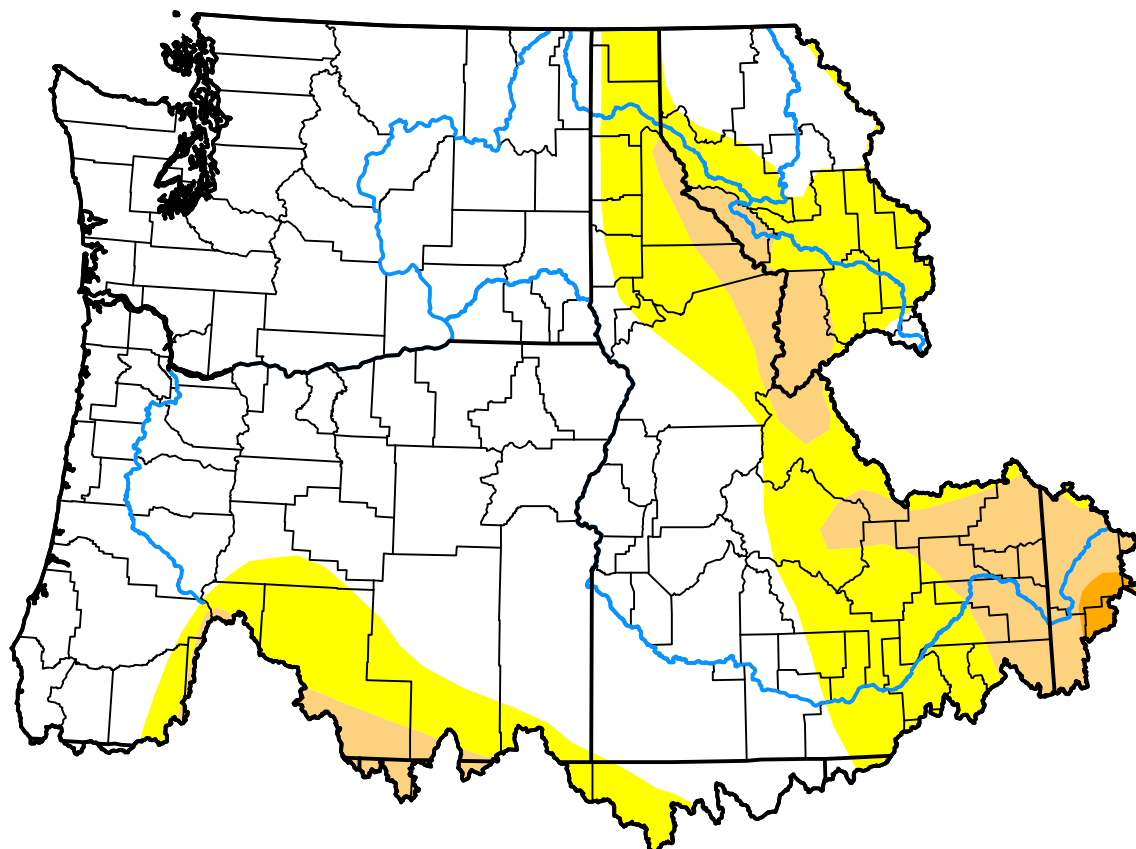
June 22, 2010

(Released Thursday, Jun. 24, 2010)

Valid 8 a.m. EDT

Drought Conditions (Percent Area)

| | None | D0-D4 | D1-D4 | D2-D4 | D3-D4 | D4 |
|---|-------|-------|-------|-------|-------|------|
| Current | 69.54 | 30.46 | 9.66 | 0.34 | 0.00 | 0.00 |
| Last Week 06-17-2010 | 62.93 | 37.07 | 17.93 | 2.53 | 0.00 | 0.00 |
| 3 Months Ago 03-25-2010 | 8.64 | 91.36 | 38.40 | 6.74 | 0.00 | 0.00 |
| Start of Calendar Year 12-31-2009 | 47.44 | 52.56 | 5.94 | 1.93 | 0.00 | 0.00 |
| Start of Water Year 10-01-2009 | 24.96 | 75.04 | 13.21 | 2.38 | 0.00 | 0.00 |
| One Year Ago 06-25-2009 | 73.71 | 26.29 | 4.08 | 0.07 | 0.00 | 0.00 |



Intensity:

| | |
|---------------------|------------------------|
| None | D2 Severe Drought |
| D0 Abnormally Dry | D3 Extreme Drought |
| D1 Moderate Drought | D4 Exceptional Drought |

The Drought Monitor focuses on broad-scale conditions. Local conditions may vary. For more information on the Drought Monitor, go to <https://droughtmonitor.unl.edu/About.aspx>

Author:

Laura Edwards
Western Regional Climate Center



droughtmonitor.unl.edu