

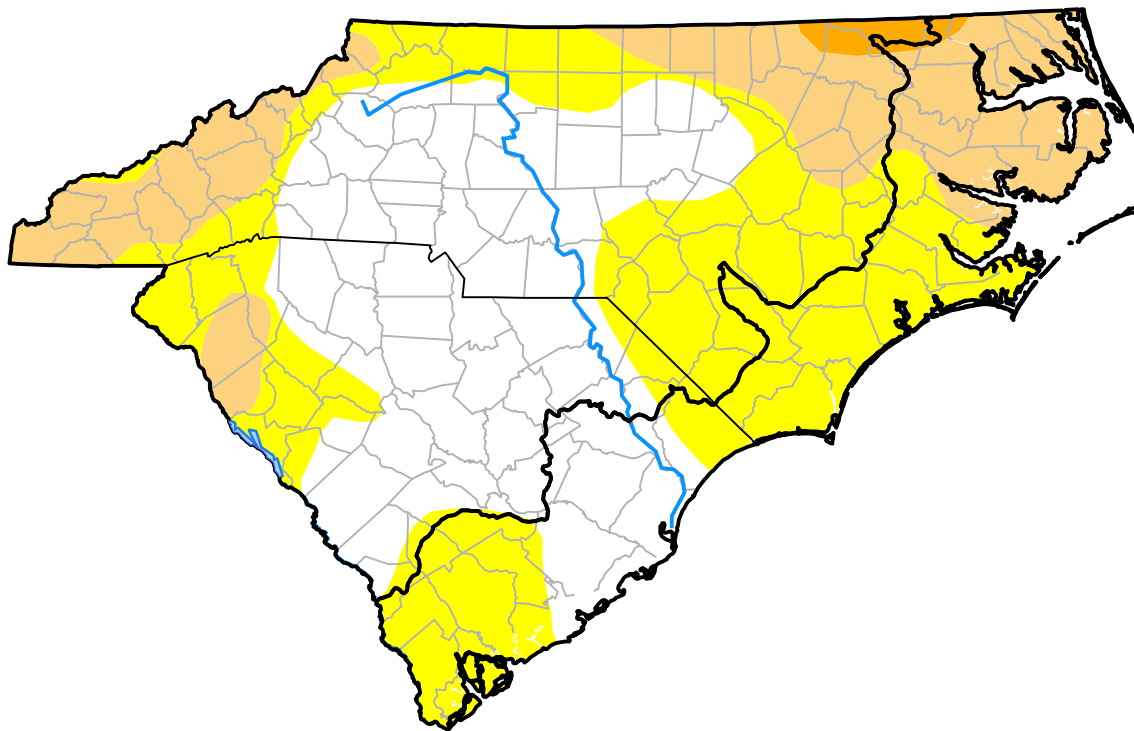
Carolinas RDEWS and Surrounding Areas

(Released Thursday, Aug. 19, 2010)

10:00 a.m. EDT

Drought Conditions (Percent Area)

	None	D0	D1	D2	D3	D4
Current	40.70	37.94	20.19	1.17	0.00	0.00
Last Week <i>08-12-2010</i>	38.62	40.02	20.19	1.17	0.00	0.00
3 Months Ago <i>05-20-2010</i>	59.51	40.49	0.00	0.00	0.00	0.00
Start of Calendar Year <i>12-31-2009</i>	100.00	0.00	0.00	0.00	0.00	0.00
Start of Water Year <i>10-01-2009</i>	41.99	31.90	20.93	5.18	0.00	0.00
One Year Ago <i>08-20-2009</i>	38.47	57.79	3.75	0.00	0.00	0.00



Intensity:

- None
- D0 Abnormally Dry
- D1 Moderate Drought
- D2 Severe Drought
- D3 Extreme Drought
- D4 Exceptional Drought

The Drought Monitor focuses on broad-scale conditions. Local conditions may vary. For more information on the Drought Monitor, go to <https://droughtmonitor.unl.edu/About.aspx>

Author:

Brian Fuchs
National Drought Mitigation Center

