

U.S. Drought Monitor

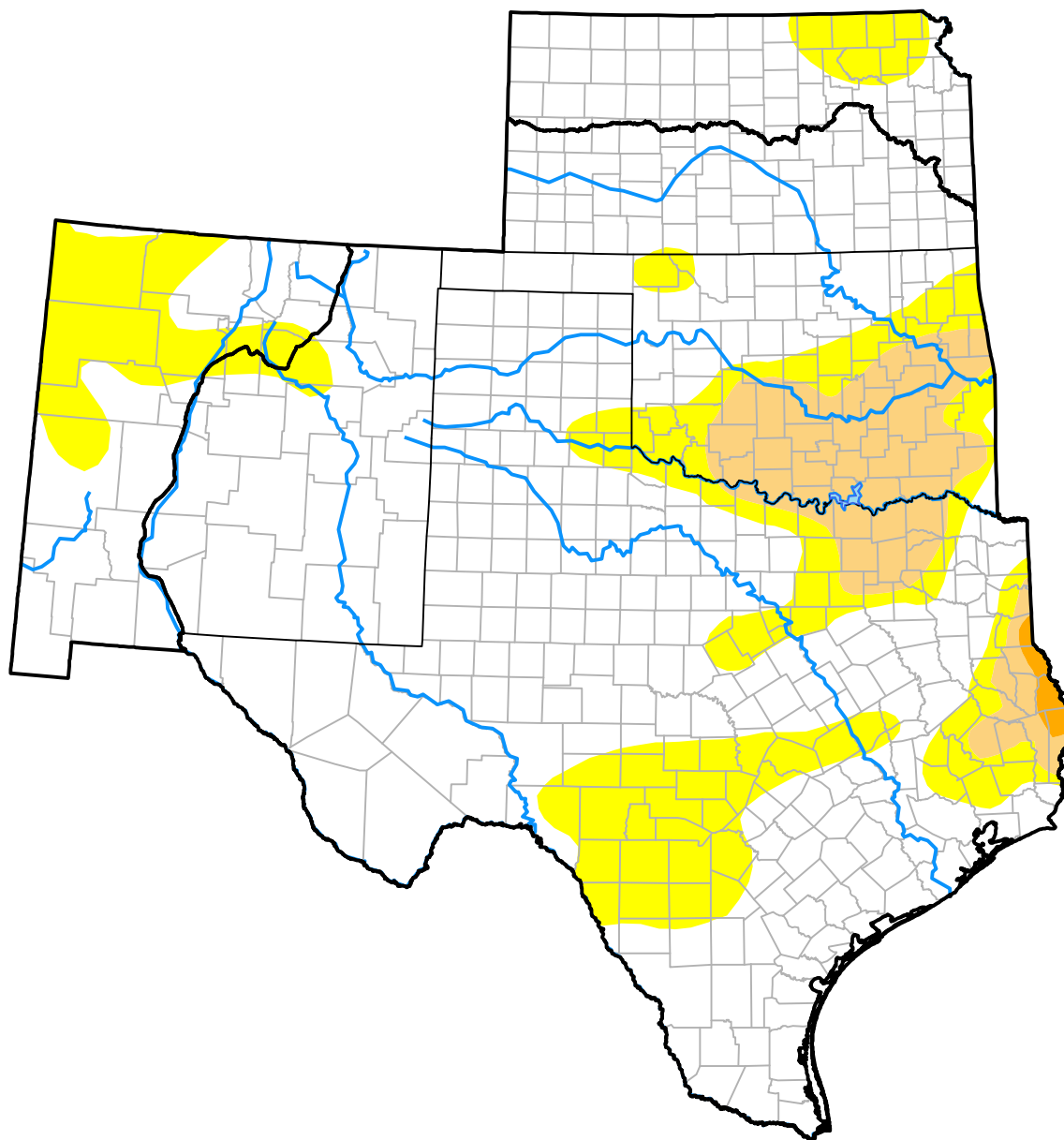
Southern Plains RDEWS

August 24, 2010
 (Released Thursday, Aug. 26, 2010)

Valid 8 a.m. EDT

Drought Conditions (Percent Area)

	None	D0-D4	D1-D4	D2-D4	D3-D4	D4
Current	71.49	28.51	8.80	0.39	0.00	0.00
Last Week <i>08-19-2010</i>	78.24	21.76	3.23	0.39	0.00	0.00
3 Months Ago <i>05-27-2010</i>	87.14	12.86	3.06	0.00	0.00	0.00
Start of Calendar Year <i>12-31-2009</i>	72.79	27.21	6.75	1.95	0.00	0.00
Start of Water Year <i>10-01-2009</i>	71.51	28.49	16.94	12.74	7.15	1.82
One Year Ago <i>08-27-2009</i>	57.16	42.84	23.52	16.74	15.37	10.93



Intensity:

- None
- D0 Abnormally Dry
- D1 Moderate Drought
- D2 Severe Drought
- D3 Extreme Drought
- D4 Exceptional Drought

The Drought Monitor focuses on broad-scale conditions. Local conditions may vary. For more information on the Drought Monitor, go to <https://droughtmonitor.unl.edu/About.aspx>

Author:

Brian Fuchs
 National Drought Mitigation Center



droughtmonitor.unl.edu