

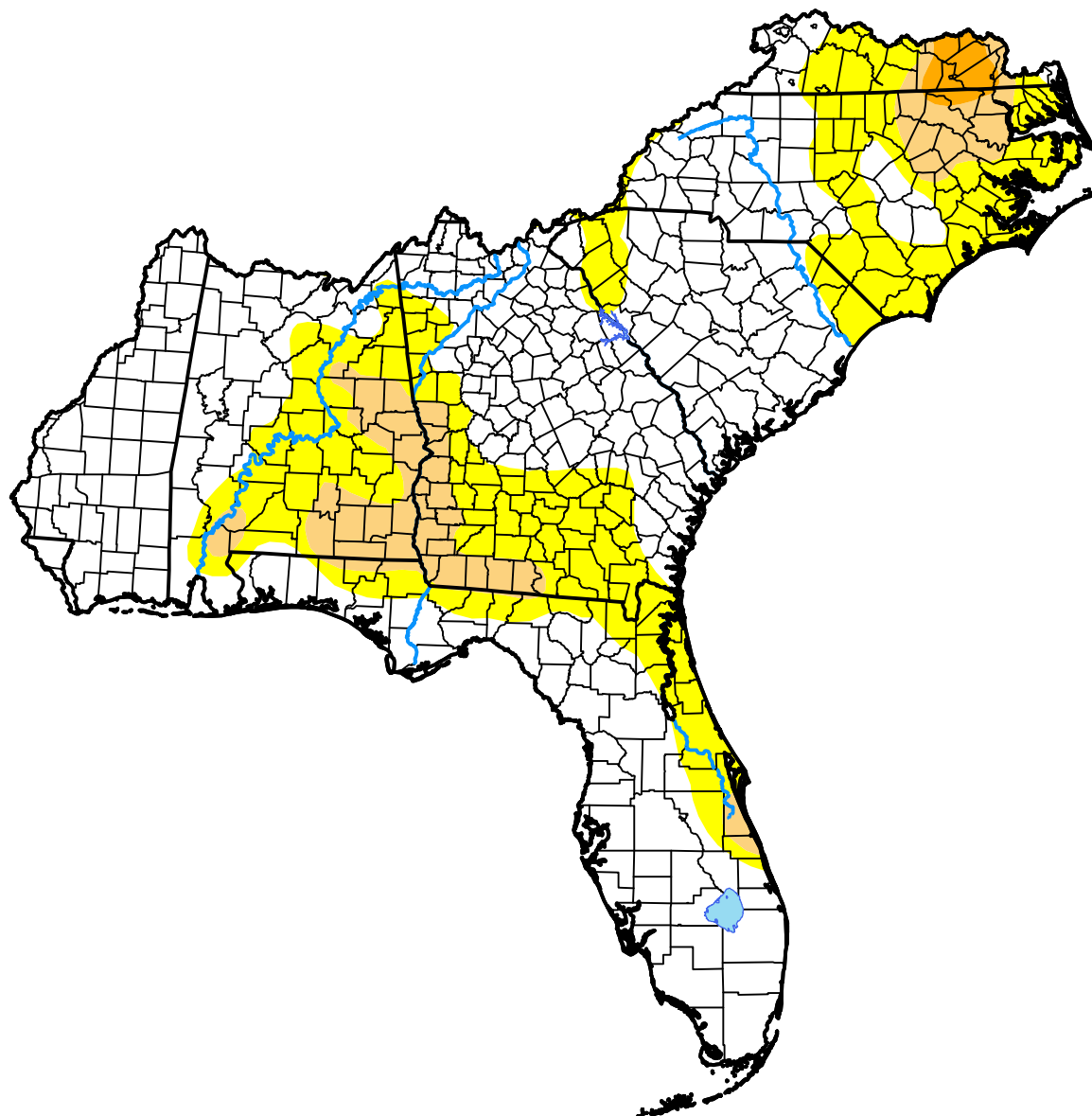
U.S. Drought Monitor

South Atlantic-Gulf Watershed

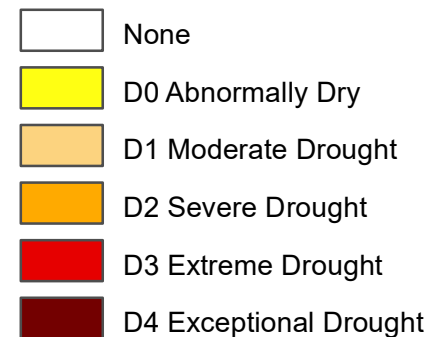
August 31, 2010

(Released Thursday, Sep. 2, 2010)

Valid 8 a.m. EDT



Intensity:



The Drought Monitor focuses on broad-scale conditions. Local conditions may vary. For more information on the Drought Monitor, go to <https://droughtmonitor.unl.edu/About.aspx>

Author:

Brad Rippey
U.S. Department of Agriculture



droughtmonitor.unl.edu