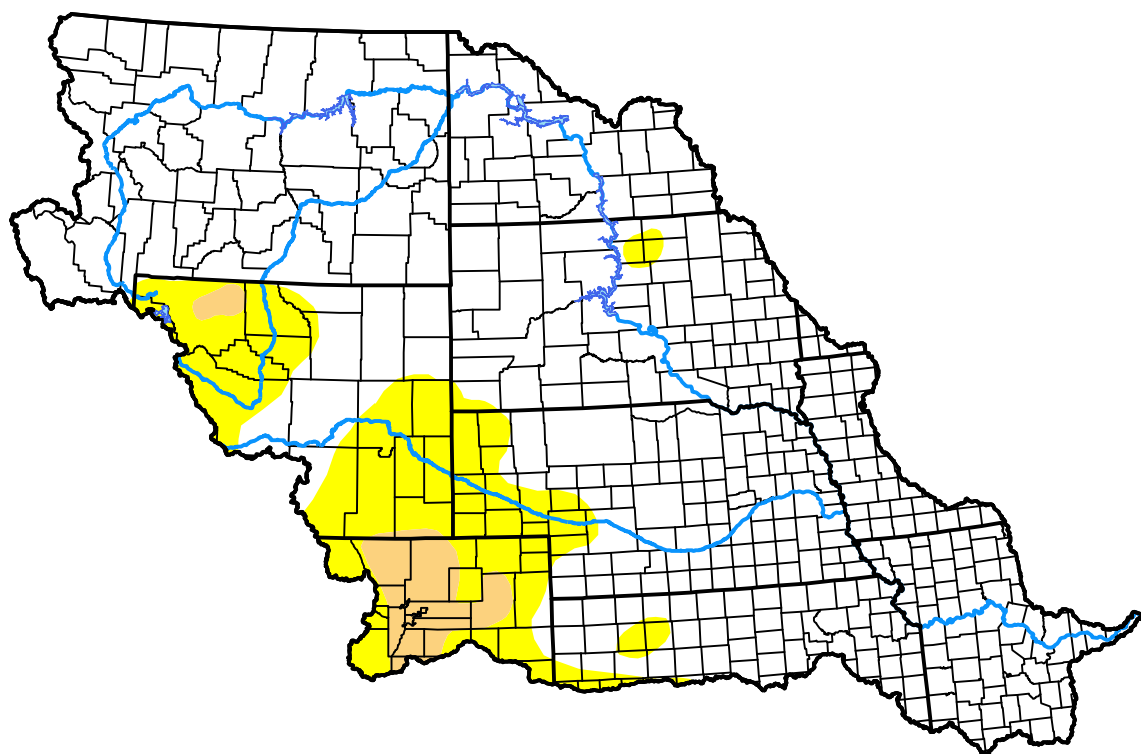


# U.S. Drought Monitor Missouri Watershed

**October 12, 2010**  
(Released Thursday, Oct. 14, 2010)  
Valid 8 a.m. EDT



*Drought Conditions (Percent Area)*

|  | None  | D0-D4 | D1-D4 | D2-D4 | D3-D4 | D4   |
|--|-------|-------|-------|-------|-------|------|
| <b>Current</b>                                     | 82.11 | 17.89 | 3.02  | 0.00  | 0.00  | 0.00 |
| <b>Last Week</b><br><i>10-07-2010</i>              | 80.53 | 19.47 | 3.02  | 0.00  | 0.00  | 0.00 |
| <b>3 Months Ago</b><br><i>07-15-2010</i>           | 97.23 | 2.77  | 0.30  | 0.00  | 0.00  | 0.00 |
| <b>Start of Calendar Year</b><br><i>12-31-2009</i> | 86.99 | 13.01 | 0.00  | 0.00  | 0.00  | 0.00 |
| <b>Start of Water Year</b><br><i>09-30-2010</i>    | 80.53 | 19.47 | 2.42  | 0.00  | 0.00  | 0.00 |
| <b>One Year Ago</b><br><i>10-15-2009</i>           | 88.21 | 11.79 | 0.72  | 0.00  | 0.00  | 0.00 |

## Intensity:

|                     |                        |
|---------------------|------------------------|
| None                | D2 Severe Drought      |
| D0 Abnormally Dry   | D3 Extreme Drought     |
| D1 Moderate Drought | D4 Exceptional Drought |

*The Drought Monitor focuses on broad-scale conditions. Local conditions may vary. For more information on the Drought Monitor, go to <https://droughtmonitor.unl.edu/About.aspx>*

## Author:

Laura Edwards  
Western Regional Climate Center



**droughtmonitor.unl.edu**